

**MECHANICS COMPONENTS:  
2C - 15C SERIES & 17R - 25R SERIES**





# CONTENTS

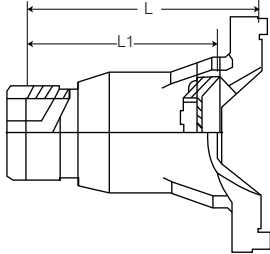
---

Reference Drawings	Pg 4
2C Series, 3C Series, 4C Series	Pg 5
5C Series	Pg 6
6C Series	Pg 7
7C Series	Pg 8
8C Series, 8.5C Series	Pg 10
9C Series	Pg 11
10C Series	Pg 12
12C Series	Pg 13
15C Series	Pg 14
17R Series	Pg 15
2R Series	Pg 16
21R Series	Pg 17
25R Series	Pg 18
3R Series - Refer to SAE section	

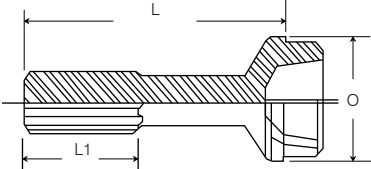
*PLEASE CONTACT US TO CONFIRM AVAILABILITY OF LISTED COMPONENTRY - OTHER PARTS & SERIES NOT SHOWN MAY BE AVAILABLE ON APPLICATION - PLEASE ENQUIRE.*

# REFERENCE DRAWINGS

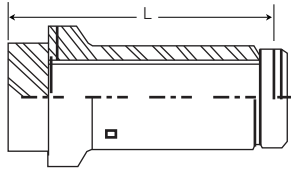
SLIP YOKES



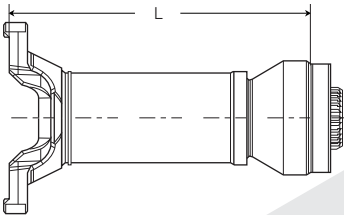
SLIP STUBS



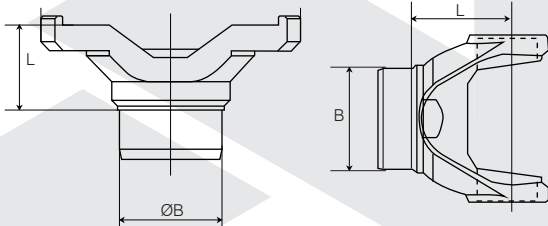
BARREL



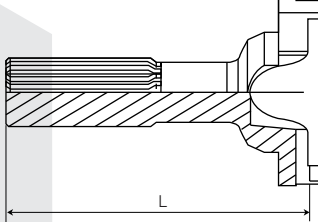
SLIP SETS



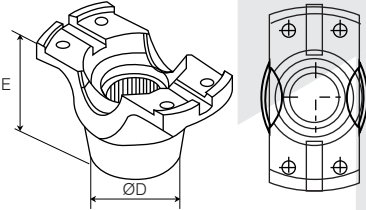
TUBE YOKES



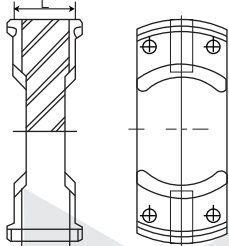
YOKE SHAFTS



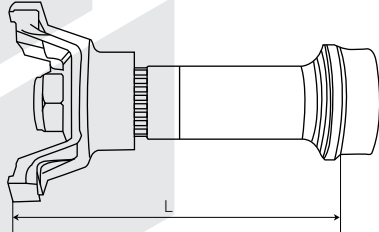
END YOKES



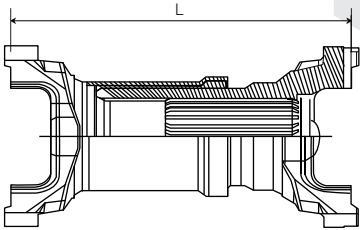
CENTRE PLATES



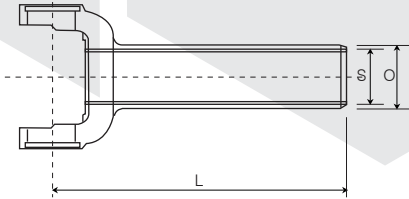
MIDSHIP C/BEARING ASSEMBLIES



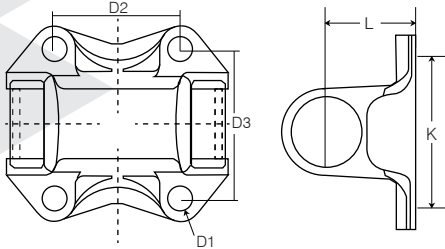
SHORT COUPLE SETS



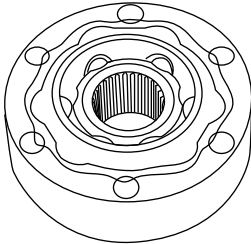
REVERSE SLIP YOKES



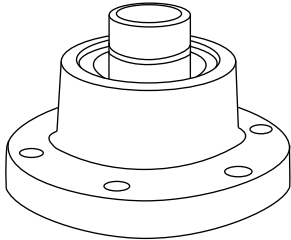
FLANGE YOKES



CV JOINTS



CV BOOT KIT



# 2C SERIES - 33.34 X 59.53 MM BHC

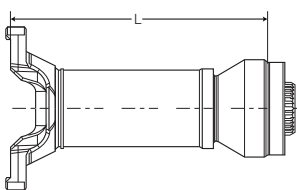
PART NO	ITEM DESCRIPTION	NOTES
<b>UNIVERSAL JOINTS</b>		
114-2110	2C SERIES 33.34 X 59.53 - 4LWT	
114-2116	2C SERIES 33.34 X 59.53 - 2LWT/2LWD	
114-2117	2C SERIES 33.34 X 59.53 - 2LWD	
114-2111	2C SERIES 33.34 X 59.53 2LWT TO 2R 25.40 X 59.44	
114-2114	2C SERIES 33.34 X 59.53 2LWD TO 2R 25.40 X 59.44	
5-291X	2C SERIES 33.34 X 59.53 2LWT TO 1310 26.99 X 81.76	

# 3C SERIES - 36.52 X 69.85 MM BHC

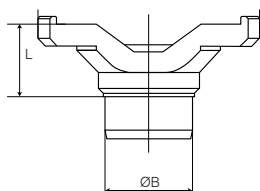
PART NO	ITEM DESCRIPTION	NOTES
<b>UNIVERSAL JOINTS</b>		
114-3100	3C SERIES 36.52 x 69.85 - 4LWT	
114-3101	3C SERIES 36.52 x 69.85 - 2LWT/2LWD	
114-3125	3C SERIES 36.52 x 69.85 - 4HWD	
114-3102	3C SERIES 36.52 X 69.85 2LWT TO 3R 28.58 X 65.10 IC	
114-3120	3C SERIES 36.52 X 69.85 2HWD TO 3R 28.58 X 65.10 IC	
5-356X	3C SERIES 36.52 X 69.85 2LWT TO 1310 26.99 X 81.76	

# 4C SERIES - 36.52 X 87.32 MM BHC

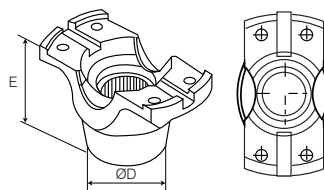
SLIP SETS



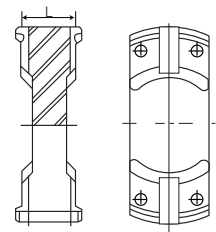
TUBE YOKES



END YOKES



CENTRE PLATES



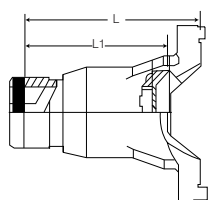
PART NO	ITEM DESCRIPTION	NOTES
<b>UNIVERSAL JOINTS</b>		
114-4113	4C SERIES 36.52 X 87.32 - 4HWD	
114-4100	4C SERIES 36.52 X 87.32 - 4LWT	

# 4C SERIES - 36.52 X 87.32 MM BHC

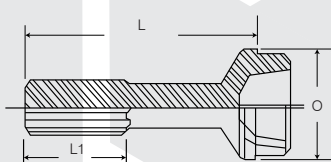
PART NO	ITEM DESCRIPTION	NOTES
<b>UNIVERSAL JOINTS</b>		
RUJ-4003	4C SERIES 36.52 X 87.32 - 2LWT/2LWD	
114-4110	4C SERIES 36.52 X 87.32 - 2LWT/2HWD	
114-4109	4C SERIES 36.52 X 87.32 2HWD TO 4R 28.58 X 82.55 IC	
<b>SLIP SETS</b>		
4C-6-710	4C SERIES SLIP SET 16 INV. SPL, 50MM TUBE, L = 160MM	
<b>TUBE YOKES</b>		
4C-28-400	4C SERIES - 2.50 TUBE	
4C-28-503	4C SERIES - 50 X 3 TUBE	
<b>END YOKES</b>		
4C-4-72	4C SERIES 72MM SOLID BOSS	
<b>CENTRE PLATES</b>		
4C-5-001	4C SERIES - WIDTH = 39MM	

# 5C SERIES - 42.85 X 88.90 MM BHC

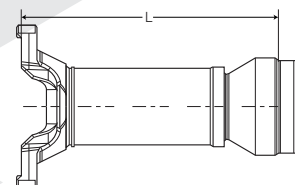
SLIP YOKES



SLIP STUBS



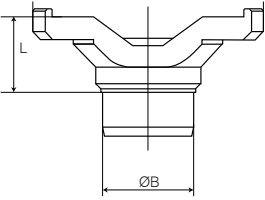
SLIP SETS



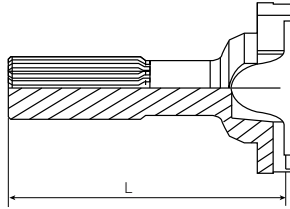
PART NO	ITEM DESCRIPTION	NOTES
<b>UNIVERSAL JOINTS</b>		
114-5122	5C SERIES 42.85 X 88.90 - 4LWT	
114-5127	5C SERIES 42.85 X 88.90 - 2LWT/2LWD	
114-5148	5C SERIES 42.85 X 88.90 - 4LWD	
114-5173	5C SERIES 42.85 X 88.90 - 2LWT/2HWD	
114-5177	5C SERIES 42.85 X 88.90 - 4HWD	
114-5132	5C SERIES 42.85 X 88.90 2LWT TO 5R 33.35 X 54.15 IC	
114-5154	5C SERIES 42.85 X 88.90 2HWD TO 5R 33.35 X 54.15 IC	
<b>SLIP YOKES</b>		
5C-3-001	5C SERIES SLIP YOKE - 1.56 X 16 SPL - L = 152.4MM	
5C-3-503	5C SERIES SLIP YOKE - 2.00 X 16 SPL - L = 200.00MM	

# 5C SERIES - 42.85 X 88.90 MM BHC

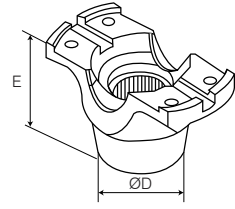
TUBE YOKES



YOKE SHAFTS



END YOKES



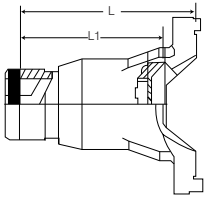
PART NO	ITEM DESCRIPTION	NOTES
<b>SLIP STUBS</b>		
6C-40-604	5C SERIES 2.00 X 16 SPL, L = 223MM	
<b>SLIP SETS</b>		
5C-6-604	5C SERIES SLIP SET - L = 205MM, 60MM TUBE	EUROPEAN SPLINE
5C-6-503	5C SERIES SLIP SET - L = 245MM, 3.00 TUBE	
<b>TUBE YOKES</b>		
5C-28-501	5C SERIES - 2.50 TUBE	
5C-28-502	5C SERIES - 73 X 4MM TUBE	
<b>YOKE SHAFTS</b>		
5C-82-501	5C SERIES - 2.00 X 16 SPL, L = 121.00MM	
5C-82-502	5C SERIES - 2.00 X 16 SPL, L = 145.00MM	
<b>END YOKES</b>		
5C-4-92	5C SERIES - 92MM SOLID BOSS	
<b>DRIVESHAFTS &amp; SHORT COUPLE SETS</b>		
5C-03-177	5C SERIES SHORT COUPLED, LZ = 177MM	

# 6C SERIES - 42.85 X 114.30 MM BHC

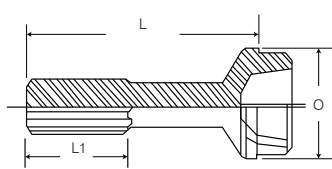
PART NO	ITEM DESCRIPTION	NOTES
<b>UNIVERSAL JOINTS</b>		
114-6103	6C SERIES 42.85 X 114.30 - 2LWD/2LWT	
114-6104	6C SERIES 42.85 X 114.30 - 4LWD	
114-6114	6C SERIES 42.85 X 114.30 - 2LWT/2HWD	
114-6114P	6C SERIES 42.85 X 114.30 - 2LWT/2HWD	PREMIUM
114-6128	6C SERIES 42.85 X 114.30 - 4HWD	
114-6128P	6C SERIES 42.85 X 114.30 - 4HWD	PREMIUM
114-6128SP	6C SERIES 42.85 X 114.30 - 4HWD	LFL
114-6143	6C SERIES 42.85 X 114.30 - 4LWT	
114-6143P	6C SERIES 42.85 X 114.30 - 4LWT	PREMIUM
114-6150	6C SERIES 42.85 X 114.30 2HWD TO 6R 33.35 X 109.50	
5-221X	6C SERIES 42.85X114.30 2HWD TO 1550 34.93 X 126.20	

# 6C SERIES - 42.85 X 114.30 MM BHC

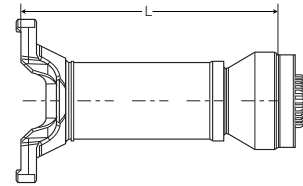
SLIP YOKES



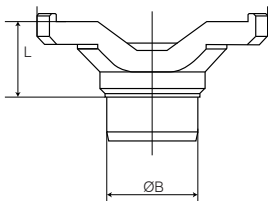
SLIP STUBS



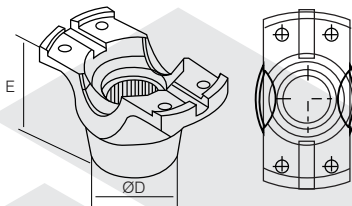
SLIP SETS



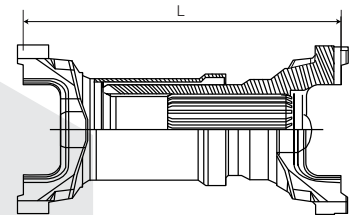
TUBE YOKES



END YOKES



SHORT COUPLE SETS



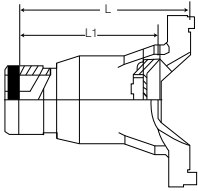
PART NO	ITEM DESCRIPTION	NOTES
<b>SLIP YOKES</b>		
6C-3-604	6C SERIES - 1.75 X 16 SPL - L = 225MM	
<b>SLIP STUBS</b>		
6C-40-604	6C SERIES 2.00 X 16 SPL, L = 223MM	
<b>SLIP SETS</b>		
6C-6-105	6C SERIES SLIP SET - L = 240MM, 70MM TUBE	EUROPEAN SPLINE
6C-6-730	6C SERIES SLIP SET - L = 200MM, 70MM TUBE	
<b>TUBE YOKES</b>		
6C-28-600	6C SERIES - 3.00 TUBE	
<b>END YOKES</b>		
6C-4-600	6C SERIES - 2.00 X 16 SPL, E - LENGTH = 100MM	
<b>SHORT COUPLE SETS</b>		
6C-03-190	6C SERIES SHORT COUPLED, LZ = 190MM	

# 7C SERIES - 49.21 X 117.60 MM BHC

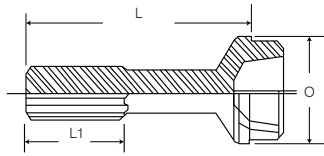
PART NO	ITEM DESCRIPTION	NOTES
<b>UNIVERSAL JOINTS</b>		
114-7126	7C SERIES 49.21 X 117.60 - 4HWD	
114-7126P	7C SERIES 49.21 X 117.60 - 4HWD	PREMIUM
114-7126SP	7C SERIES 49.21 X 117.60 - 4HWD	LFL
114-7205	7C SERIES 49.21 X 117.60 - 4LWT	
114-7205P	7C SERIES 49.21 X 117.60 - 4LWT	PREMIUM

# 7C SERIES - 49.21 X 117.60 MM BHC

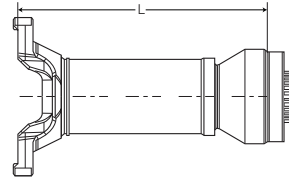
SLIP YOKES



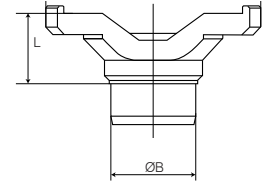
SLIP STUBS



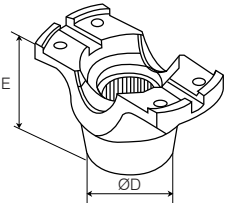
SLIP SETS



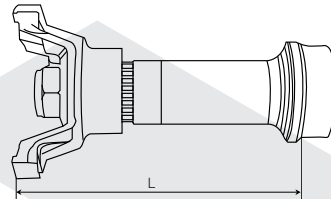
TUBE YOKES



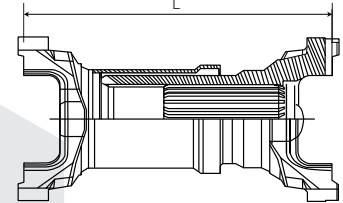
END YOKES



MIDSHIP C/BEARING ASSEMBLIES



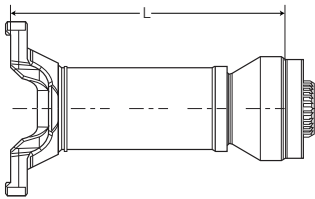
SHORT COUPLE SETS



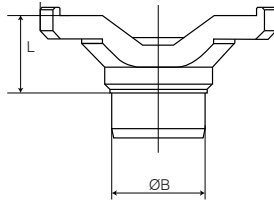
PART NO	ITEM DESCRIPTION	NOTES
<b>UNIVERSAL JOINTS</b>		
114-7207	7C SERIES 49.21 X 117.60 - 2LWT/2HWD	
114-7207P	7C SERIES 49.21 X 117.60 - 2LWT/2LWD	PREMIUM
114-7000RHWD	7C SERIES 49.21 X 117.60 2HWD TO 7R 41.28 X 110.80	KOMATSU / JCB
5-330X	7C SERIES 49.21 X 117.60 HWD TO 1650 41.28 X 142.00	
912003	7C SERIES 49.21 X 117.60 HWD TO 41.00 X 111.20	FURUKAWA/KOMATSU
<b>SLIP YOKES</b>		
7C-3-001	7C SERIES - 2.00 X 16 SPL - L = 180MM	
7C-3-704	7C SERIES - 2.00 X 16 SPL - L = 200MM	
<b>SLIP STUBS</b>		
6C-40-604	7C SERIES 2.00 X 16 SPL, L = 223MM	
<b>SLIP SETS</b>		
7C-6-740/1	7C SERIES SLIP SET - L = 260MM, 3.50 TUBE	
<b>TUBE YOKES</b>		
7C-28-702	7C SERIES - 3.50 TUBE	
<b>END YOKES</b>		
7C-4-110	7C SERIES 110MM SOLID BOSS	
7C-4-701	7C SERIES 2.00 X 31 SPL, 3.00 SEAL	
<b>MIDSHIP C/BEARING ASSEMBLIES</b>		
7C-8-701X	7C SERIES MIDSHIP ASSEMBLY - 2.00 X 31 SPL, 3.50 TUBE, LESS BEARING	
7C-8-703X	7C SERIES MIDSHIP ASSEMBLY - 2.00 X 16 SPL, LESS BEARING	
<b>SHORT COUPLE SETS</b>		
7C-03-131	7C SERIES SHORT COUPLED, LZ = 131MM	
7C-03-190	7C SERIES SHORT COUPLED, LZ = 190MM	
7C-03-210	7C SERIES SHORT COUPLED, LZ = 210MM EXCL. U/J	
7C-03-230	7C SERIES SHORT COUPLED, LZ = 230MM EXCL. U/J	
7C-03-309	7C SERIES SHORT COUPLED, LZ = 309MM	
7C-03-325	7C SERIES SHORT COUPLED, LZ = 325MM	

# 8C SERIES - 49.21 X 174.63 MM BHC

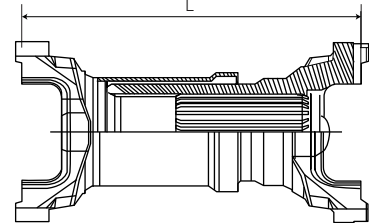
SLIP SETS



TUBE YOKES



SHORT COUPLE SETS



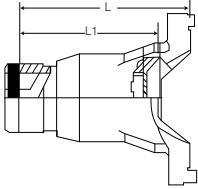
PART NO	ITEM DESCRIPTION	NOTES
<b>UNIVERSAL JOINTS</b>		
114-8113	8C SERIES 49.21 X 174.63 - 4HWD	
114-8113P	8C SERIES 49.21 X 174.63 - 4HWD	PREMIUM
114-8113SP	8C SERIES 49.21 X 174.63 - 4HWD	LFL
114-8205	8C SERIES 49.21 X 174.63 - 4LWT	
114-8205P	8C SERIES 49.21 X 174.63 - 4LWT	PREMIUM
114-8207	8C SERIES 49.21 X 174.63 - 2LWT/2HWD	
<b>SLIP SETS</b>		
8C-6-750	8C SERIES SLIP SET - 26 INV. SPL, 95MM TUBE, L = 260MM	
<b>TUBE YOKES</b>		
8C-28-800	8C SERIES - 4.00 TUBE	
<b>SHORT COUPLE SETS</b>		
8C-03-344	8C SERIES SHORT COUPLED, LZ = 344MM	

# 8.5C SERIES - 71.44 X 123.83 MM BHC

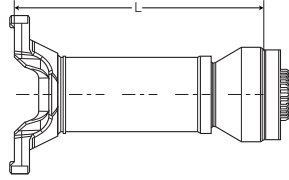
PART NO	ITEM DESCRIPTION	NOTES
<b>UNIVERSAL JOINTS</b>		
114-8508	8.5C SERIES 71.44 X 123.83 - 2LWT/2HWD	
114-8514	8.5C SERIES 71.44 X 123.83 - 4LWT	
114-8516	8.5C SERIES 71.44 X 123.83 - 4HWD	
114-8516P	8.5C SERIES 71.44 X 123.83 - 4HWD	PREMIUM
114-8516SP	8.5C SERIES 71.44 X 123.83 - 4HWD	LFL

# 8.5C SERIES - 71.44 X 123.83 MM BHC

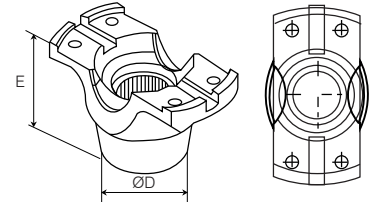
SLIP YOKES



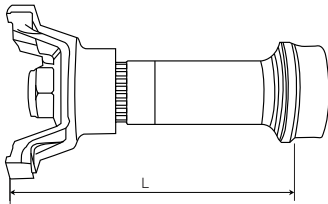
SLIP SETS



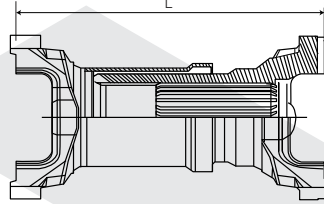
END YOKES



MIDSHIP C/BEARING ASSEMBLIES



SHORT COUPLE SETS



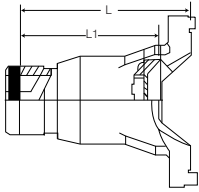
PART NO	ITEM DESCRIPTION	NOTES
<b>SLIP YOKES</b>		
8.5C-3-001	8.5C SERIES SLIP YOKE - 2.50 X 16 SPL, L = 219MM	
<b>SLIP SETS</b>		
8.5C-6-760	8.5C SERIES SLIP SET - 100MM TUBE, L = 280MM	EUROPEAN SPLINE
<b>END YOKE</b>		
8.5C-4-852	8.5C SERIES 2.375 X 18 SPL, 90.00MM SEAL, TO SUIT 8.5C-8-852X MIDSHIP ASSY	
<b>MIDSHIP C/BEARING ASSEMBLIES</b>		
8.5C-8-852X	8.5C SERIES MIDSHIP ASSEMBLY - 2.375 X 18 SPL, 100MM TUBE, LESS BEARING	
<b>SHORT COUPLE SETS</b>		
8.5C-03-210	8.5C SERIES SHORT COUPLED, LZ = 210MM	
8.5C-03-225	8.5C SERIES SHORT COUPLED, LZ = 225MM	
8.5C-03-240	8.5C SERIES SHORT COUPLED, LZ = 240MM EUROPEAN	
8.5C-03-245	8.5C SERIES SHORT COUPLED, LZ = 245MM SAE	
8.5C-03-258E	8.5C SERIES SHORT COUPLED, LZ = 258MM SAE	

# 9C SERIES - 71.44 X 168.30 MM BHC

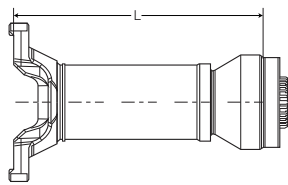
PART NO	ITEM DESCRIPTION	NOTES
<b>UNIVERSAL JOINTS</b>		
114-9014	9C SERIES 71.44 X 168.30 - 4LWT	
114-9014P	9C SERIES 71.44 X 168.30 - 4LWT	PREMIUM
114-9014SP	9C SERIES 71.44 X 168.30 - 4LWT	LFL
114-9016	9C SERIES 71.44 X 168.30 - 4HWD	
114-9016P	9C SERIES 71.44 X 168.30 - 4HWD	PREMIUM
114-9016SP	9C SERIES 71.44 X 168.30 - 4HWD	LFL

# 9C SERIES - 71.44 X 168.30 MM BHC

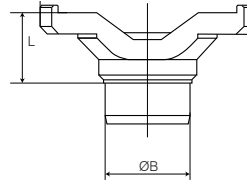
SLIP YOKES



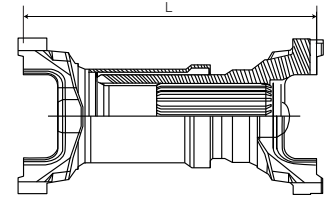
SLIP SETS



TUBE YOKES



SHORT COUPLE SETS



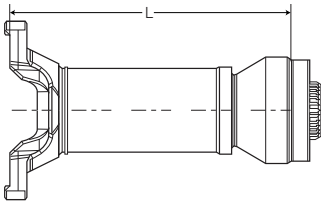
PART NO	ITEM DESCRIPTION	NOTES
<b>UNIVERSAL JOINTS</b>		
114-9017	9C SERIES 71.44 X 168.30 - 2LWT/2HWD	
114-9017P	9C SERIES 71.44 X 168.30 - 2LWT/2HWD	PREMIUM
5-324X	9C SERIES 71.44 X 168.30 - HWD TO 1810 49.21 X 191.69	
5-326X	9C SERIES 71.44 X 168.30 - HWD TO 1880 55.55 X 205.59	
<b>SLIP YOKES</b>		
9C-3-001	9C SERIES SLIP YOKE - 3.00 X 16 SPL, L = 244MM	
<b>SLIP SETS</b>		
9C-6-1106HD	9C SERIES SLIP SET - 95 X 34 SPL, 115MM TUBE, L = 307MM	GREASABLE
9C-6-1106HDS	9C SERIES SLIP SET - 95 X 34 SPL, 115MM TUBE, L = 307MM	SEALED
<b>TUBE YOKE</b>		
9C-28-900	9C SERIES - 4.50 TUBE	
<b>SHORT COUPLE SETS</b>		
9C-03-287	9C SERIES SHORT COUPLED, L = 287MM	
9C-03-347	9C SERIES SHORT COUPLED, L = 347MM	
9C-03-435	9C SERIES SHORT COUPLED, L = 435MM INCL. U/J	
9C-03-535	9C SERIES SHORT COUPLED, L = 535MM INCL. U/J	

# 10C SERIES - 92.07 X 165.10 MM BHC

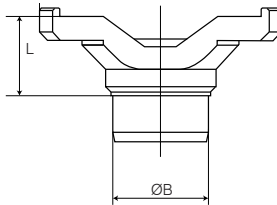
PART NO	ITEM DESCRIPTION	NOTES
<b>UNIVERSAL JOINTS</b>		
114-10003	10C SERIES 92.07 X 165.10 - 4HWD .562 BOLTS	
114-10011	10C SERIES 92.07 X 165.10 - 4HWD .625 BOLTS	
114-10011P	10C SERIES 92.07 X 165.10 - 4HWD .625 BOLTS	PREMIUM
114-10011SP	10C SERIES 92.07 X 165.10 - 4HWD .625 BOLTS	LFL

# 10C SERIES - 92.07 X 165.10 MM BHC

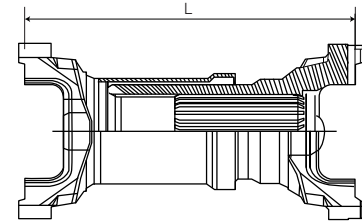
SLIP SETS



TUBE YOKES



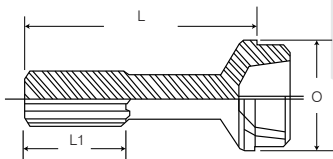
SHORT COUPLE SETS



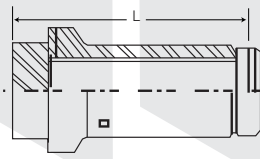
PART NO	ITEM DESCRIPTION	NOTES
<b>SLIP SETS</b>		
10C-6-001	10C SERIES SLIP SET - 144MM TUBE, L = 391MM	
<b>TUBE YOKES</b>		
10C-26-1006	10C SERIES - 140 X 5 TUBE	
<b>SHORT COUPLE SETS</b>		
10C-03-345	10C SERIES SHORT COUPLED, L = 345MM	

# 12C SERIES - 92.20 X 241.30 MM BHC

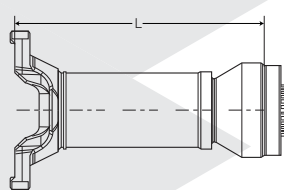
SLIP STUBS



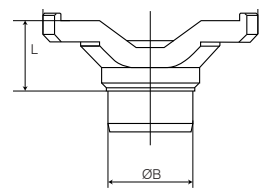
BARREL



SLIP SETS



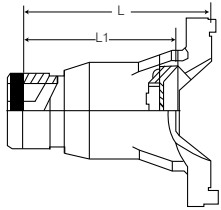
TUBE YOKES



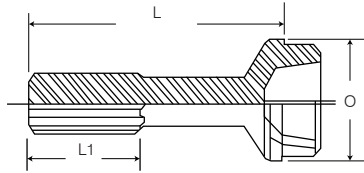
PART NO	ITEM DESCRIPTION	NOTES
<b>UNIVERSAL JOINTS</b>		
114-12002	12C SERIES 92.20 X 241.30 - 4HWD, KOMATSU	14MM BOLTS
<b>SLIP STUBS</b>		
15C-40-1500	12C SERIES 4.00 X 37 SPL, L = 360.4MM	AVAILABLE ON REQUEST ONLY
<b>BARREL</b>		
15C-55-1500	12C SERIES BARREL - 4.00 X 37 SPL, BUTT = 114.3MM, L = 273MM	AVAILABLE ON REQUEST ONLY
<b>SLIP SETS</b>		
12C-6-001	12C SERIES SLIP SET - 160 X 10MM TUBE, L = 358MM	
<b>TUBE YOKES</b>		
12C-28-1202	12C SERIES - 160 X 10 TUBE	

# 15C SERIES - 99.97 X 199.95 MM BHC

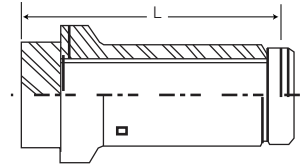
SLIP YOKES



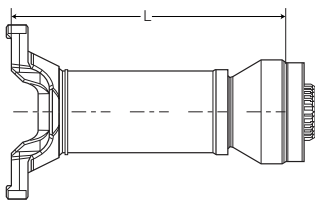
SLIP STUBS



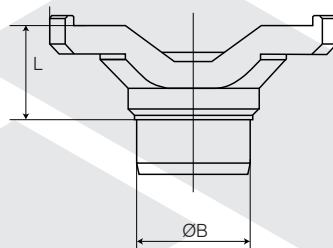
BARREL



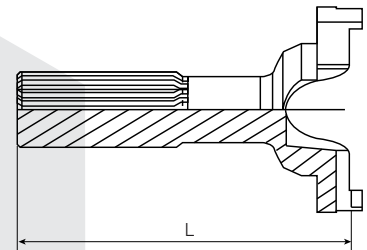
SLIP SETS



TUBE YOKES



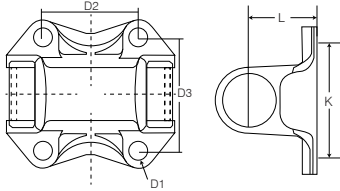
YOKE SHAFT



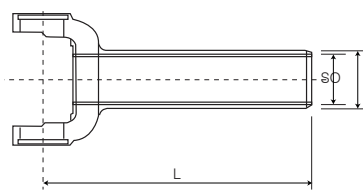
PART NO	ITEM DESCRIPTION	NOTES
<b>UNIVERSAL JOINTS</b>		
114-15002LFL	15C SERIES 99.97 X 199.95 - 4HWD	LFL
<b>SLIP YOKES</b>		
15C-3-1500	15C SERIES SLIP YOKE - 4.0 X 38 SPL, L = 336.6MM	AVAILABLE ON REQUEST ONLY
<b>SLIP STUBS</b>		
15C-40-1500	15C SERIES 4.00 X 37 SPL, L = 360.4MM	AVAILABLE ON REQUEST ONLY
<b>BARREL</b>		
15C-55-1500	15C SERIES BARREL - 4.00 X 37 SPL, BUTT = 114.3MM, L = 273MM	AVAILABLE ON REQUEST ONLY
<b>SLIP SETS</b>		
15C-6-1500	15C SERIES SLIP SET - 6.5 X 0.375 TUBE, L = 417.6MM	AVAILABLE ON REQUEST ONLY
<b>TUBE YOKE</b>		
15C-28-1500	15C SERIES - 6.5 X 0.375 TUBE	AVAILABLE ON REQUEST ONLY
<b>YOKE SHAFTS</b>		
15C-82-1501	15C SERIES - 4.0 X 38 SPL, L = 340MM	AVAILABLE ON REQUEST ONLY

# 17R SERIES - 25.40 X 43.64 MM

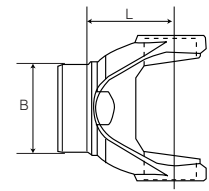
FLANGE YOKES



REVERSE SLIP YOKES



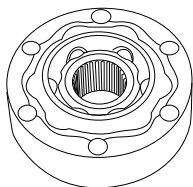
TUBE YOKES



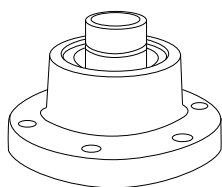
PART NO	ITEM DESCRIPTION	NOTES
<b>UNIVERSAL JOINTS</b>		
RUJ-1786	17R SERIES 25.40 X 43.64 IC	
RUJ-1786R	17R SERIES 25.40 X 43.64 IC	THRUST WASHERS
RUJ-1764	17R SERIES 25.40 X 43.64 IC TO 17C 33.34 X 44.86 LWT	
RUJ-1766	17R SERIES 25.40 X 43.64 IC TO 1140 23.80 X 61.20	
<b>FLANGE YOKES</b>		
17R-2-413C	17R SERIES LARGE ESCORT - D2 = 67MM, D3 = 60MM, K = 56MM	
17R-2-423C	17R SERIES TOYOTA - D2 = 55MM, D3 = 55MM, K = 46MM	
17R-2-429	17R SERIES 1140 FACE - N = 87.30MM, D = 69.85MM, D1 = 7.92MM, K = 57.15MM	
17R-2-431C	17R SERIES MAZDA - D2 = 63MM, D3 = 63MM, K = 45MM	
17R-2-437	17R SERIES COMMODORE - D2 = 67.4MM, D3 = 39MM, K = 57MM	
17R-2-439C	17R SERIES TOYOTA - D2 = 60MM, D3 = 60MM, K = 46MM	
17R-2-445	17R SERIES LARGE CORTINA - D2 = 67MM, D3 = 60MM, K = 56MM	
<b>REVERSE SLIP YOKES</b>		
17R-3-1188	17R SERIES HOLDEN - S = 27 SPL, O = 38.10 SEAL	AUTO/MANUAL VK COMMODORE
17R-3-1308	17R SERIES NISSAN - S = 24 SPL, O = 34.95 SEAL	
17R-3-1358	17R SERIES CORTINA - S = 20 SPL, O = 30.13 SEAL	
17R-3-1478	17R SERIES TOYOTA - S = 21 SPL, O = 37.97 SEAL	
17R-3-1498R	17R SERIES DATSUN - S = 18 SPL, O = 29.93 SEAL	
17R-3-1518	17R SERIES CORTINA - S = 25 SPL, O = 34.91 SEAL	
17R-3-1628	17R SERIES HOLDEN - S = 11 SPL, O = 34.87 SEAL	3 SPEED
17R-3-1848	17R SERIES ESCORT - S = 16 SPL, O = 30.13 SEAL	
17R-3-2158	17R SERIES MAZDA - S = 22 SPL, O = 34.90 SEAL	
17R-3-2498	17R SERIES VK COMMODORE - S = 24 SPL, O = 35.92 SEAL	5 SPEED
17R-3-2638	17R SERIES TOYOTA - S = 22 SPL, O = 31.95 SEAL	
17R-3-3038	17R SERIES MITSUBISHI - S = 26 SPL, O = 31.95 SEAL	
<b>TUBE YOKES</b>		
17R-26-330	17R SERIES - 2.00 TUBE	
17R-26-328	17R SERIES - 2.25 TUBE	
17R-26-231	17R SERIES - 2.50 TUBE	
17R-26-350	17R SERIES - 2.75 TUBE	
17R-26-261	17R SERIES - 3.00 TUBE	
<b>SMALL PARTS</b>		
104	17R SERIES HOLDEN U/BOLT CLAMP KIT - 34MM CENTRES	

# 17R SERIES - 25.40 X 43.64 MM

CV JOINT



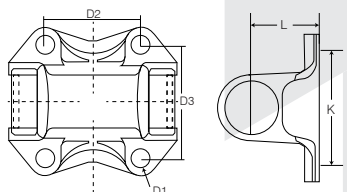
CV BOOT



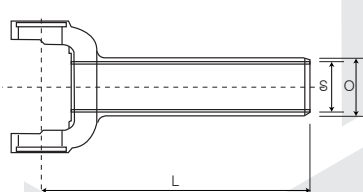
PART NO	ITEM DESCRIPTION	NOTES
<b>RWD CV ASSEMBLY PARTS</b>		
CV856	17R SERIES COMMODORE 6CYL CV SERVICE KIT - 80MM PCD X 24 SPL, 94MM O.D	MODELS VB - VL
CV852	17R SERIES COMMODORE 6CYL CV BOOT KIT ONLY	
<i>FOR COMMODORE 8 CYL &amp; VL TURBO SEE 2R SERIES - PART NO CV855</i>		

# 2R SERIES - 25.40 X 59.44 MM

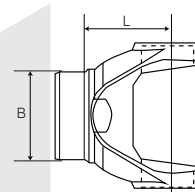
FLANGE YOKES



REVERSE SLIP YOKES



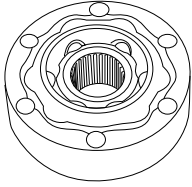
TUBE YOKES



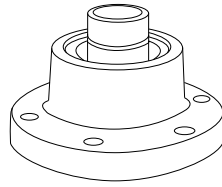
PART NO	ITEM DESCRIPTION	NOTES
<b>UNIVERSAL JOINTS</b>		
114-2101	2R SERIES 25.40 X 59.44 IC GREASABLE	
RUJ-2030	2R SERIES 25.40 X 59.44 IC NON GREASABLE	
RUJ-2030R	2R SERIES 25.40 X 59.44 IC NON GREASABLE	THRUST WASHERS
<b>FLANGE YOKES</b>		
2R-2-438	2R SERIES COMMODORE - D2 = 67.4MM, D3 = 39MM, K = 57MM	
<b>REVERSE SLIP YOKES</b>		
2R-3-1278	2R SERIES HOLDEN - S = 27 SPL, O = 38.15 SEAL	
2R-3-2918	2R SERIES NISSAN - S = 24 SPL, O = 34.95 SEAL	
2R-3-2928	2R SERIES NISSAN - S = 26 SPL, O = 37.95 SEAL	
2R-3-2938	2R SERIES COMMODORE - S = 30 SPL, O = 41.95 SEAL	
2R-3-3188	2R SERIES TOYOTA - S = 21 SPL, O = 37.97 SEAL	
<b>TUBE YOKES</b>		
2R-26-212	2R SERIES - 2.50 X .065 TUBE	
2R-26-234	2R SERIES - 2.75 X .065 TUBE	
2R-26-224	2R SERIES - 3.00 X .065 TUBE	
<b>SMALL PARTS</b>		
110	2R SERIES HOLDEN U/BOLT CLAMP KIT - 34MM CENTRES, LONG	

# 2R SERIES - 25.40 X 59.44 MM

CV JOINT



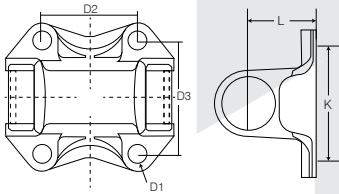
CV BOOT



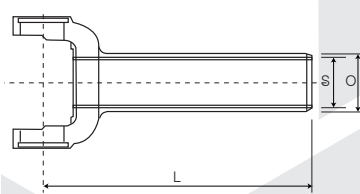
PART NO	ITEM DESCRIPTION	NOTES
<b>RWD CV ASSEMBLY PARTS</b>		
CV855	2R SERIES COMMODORE 8CYL CV SERVICE KIT - 86MM PCD X 25 SPL, 100MM O.D	ALSO 6CYL VN ON
CV853	2R SERIES COMMODORE 8CYL CV BOOT KIT ONLY	
<i>FOR COMMODORE 6 CYL SEE 17R SERIES - PART NO CV856</i>		

# 21R SERIES - 27.38 X 54.00 MM

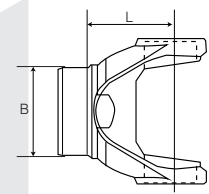
FLANGE YOKES



REVERSE SLIP YOKES



TUBE YOKES



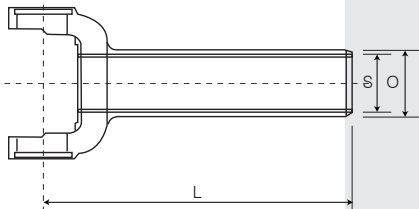
PART NO	ITEM DESCRIPTION	NOTES
<b>UNIVERSAL JOINTS</b>		
RUJ-2038	21R SERIES 27.38 X 54.00 IC	
RUJ-2038R	21R SERIES 27.38 X 54.00 IC	THRUST WASHERS
RUJ-2038S	21R SERIES 27.38 X 54.00 IC SOLID SPORTS	
RUJ-2038SP	21R SERIES 27.38 X 54.00 IC	LFL
<b>FLANGE YOKES</b>		
21R-2-446	21R SERIES COMMODORE - D2 = 67.4MM, D3 = 39MM, K = 57MM	
21S-2-455	21R SERIES MAZDA - D2 = 63MM, D3 = 63MM, K = 45MM	
21S-2-453	21R SERIES MAZDA - D2 = 68MM, D3 = 68MM, K = 45MM	
21S-2-452	21R SERIES MAZDA - D2 = 74MM, D3 = 74MM, K = 45MM	
21R-2-457	21R SERIES 1310 FACE - N = 96.80MM, D = 79.37MM, D1 = 9.53MM, K = 60.33MM	
<b>REVERSE SLIP YOKES</b>		
21R-3-3008	21R SERIES FORD - S = 24 SPL, O = 35.92 SEAL	
21R-3-3098	21R SERIES FORD C6 - S = 31 SPL, O = 42.85 SEAL	
21R-3-3140	21R SERIES NISSAN - 26 SPL, O = 37.95 SEAL	
21R-3-3168	21R SERIES T350 - S = 27 SPL, O = 38.15 SEAL	

# 21R SERIES - 27.38 X 54.00 MM

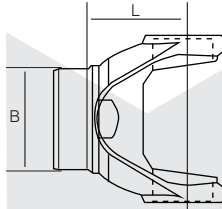
PART NO	ITEM DESCRIPTION	NOTES
<b>REVERSE SLIP YOKES</b>		
21R-3-3208	21R SERIES TOYOTA - S = 21 SPL, O = 37.97 SEAL	
21R-3-3558	21R SERIES TOYOTA - S = 23 SPL, O = 39.9 SEAL	
21R-3-3738	21R SERIES NISSAN 300ZX / VL COMMODORE TURBO - S = 30 SPL, O = 42.8 SEAL	
21S-3-3248	21R SERIES CHRYSLER 727 - S = 30 SPL, O = 42.79 SEAL	
21S-3-3288	21R SERIES VALIANT - S = 26 SPL, O = 39.7 SEAL	
21S-3-3318	21R SERIES MAZDA - S = 25 SPL, O = 37.93 SEAL	
<b>TUBE YOKES</b>		
21R-26-363	21R SERIES - 2.75 X .065 TUBE	
21R-26-357	21R SERIES - 3.00 X .065 TUBE	
<b>SMALL PARTS</b>		
106	21R SERIES CLAMP KIT - 38MM CENTRES	

# 25R SERIES - 28.58 X 59.44 MM

REVERSE SLIP YOKES



TUBE YOKES



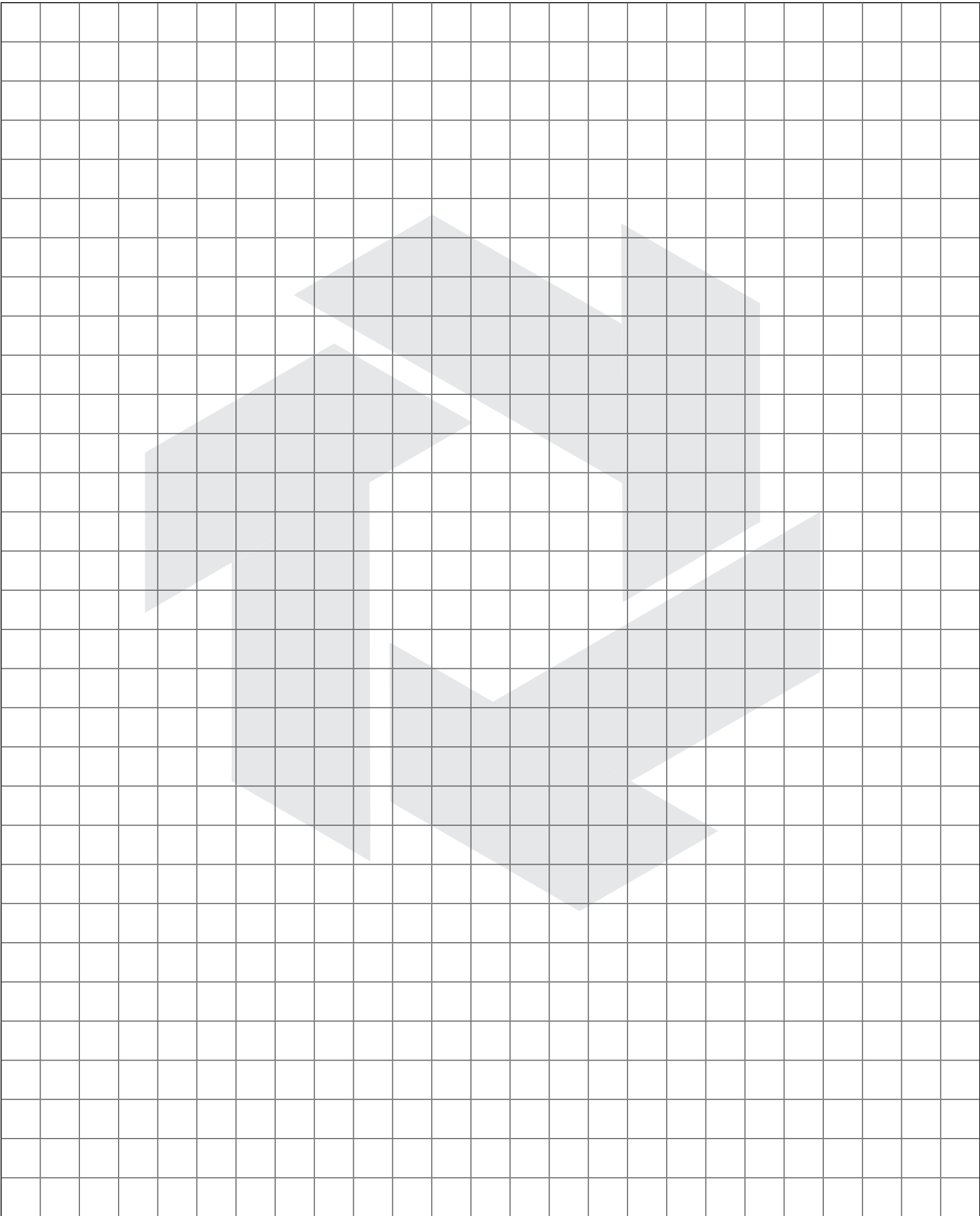
PART NO	ITEM DESCRIPTION	NOTES
<b>UNIVERSAL JOINTS</b>		
RUJ-2500	25R SERIES 28.58 X 59.44 IC	
RUJ-2500R	25R SERIES 28.58 X 59.44 IC	THRUST WASHERS
<b>REVERSE SLIP YOKES</b>		
25R-3-1488	25R SERIES T350 - S = 27 SPL, O = 38.15 SEAL	
25R-3-1538	25R SERIES T400 - S = 32 SPL, O = 47.9 SEAL	
<b>TUBE YOKES</b>		
25R-26-215	25R SERIES - 2.75 X .065 TUBE	
25R-26-216	25R SERIES - 3.00 X .065 TUBE	

# 3R SERIES - 28.58 X 65.10 MM

## REFER TO SAE SECTION, PG 20

# NOTES & DRAWINGS

---



# We're here for the long haul.

The Beattys logo consists of the word "Beattys" in a white, sans-serif font, with a small orange square above the letter 't'. The logo is centered within a dark grey circle.

**Beattys**

**Beattys Group Ltd (New Zealand)**

4 Harbour Ridge Drive, Wiri, Auckland 2104  
PO Box 97410, Manukau City, Auckland 2241

Phone +64 9 263 7761

Fax +64 9 262 0970

sales@beattys.com