

SAE COMPONENTS:

0500 - 1880 SERIES, 3R SERIES, SPL & RPL SERIES





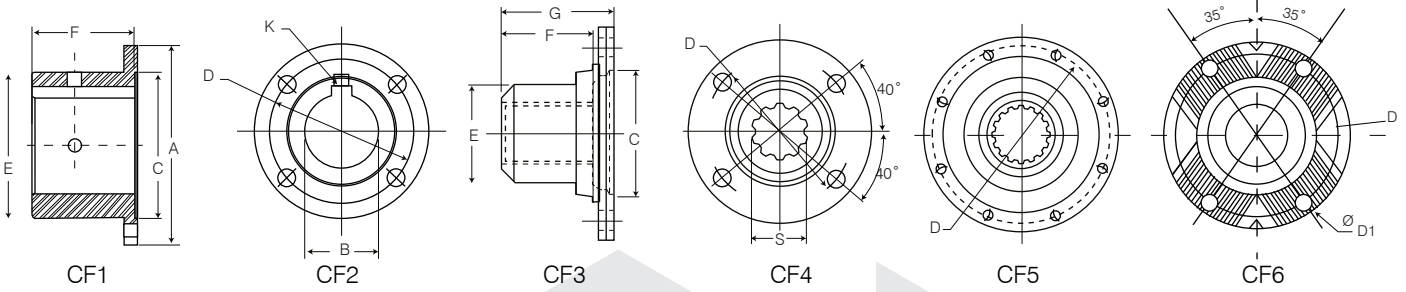
CONTENTS

Reference Drawings	Pg 4
0500 Series	Pg 6
1000 Series	Pg 7
1140 Series	Pg 9
1210 Series	Pg 11
1300 Series	Pg 12
1310 Series	Pg 13
1330 Series	Pg 18
3R Series	Pg 20
1350 Series	Pg 21
1410 Series	Pg 24
1480 Series	Pg 27
1510 Series	Pg 29
1550 Series	Pg 31
1610 Series	Pg 33
1650 Series	Pg 35
1710 Series	Pg 36
1760 Series	Pg 40
1810 Series	Pg 42
1880 Series	Pg 45
SPL70 Series, SPL90 Series	Pg 46
SPL170 Series	Pg 47
SPL250 Series	Pg 48
RPL20 Series, RPL25 Series	Pg 49
Driveshaft Tubing - Imperial	Pg 51
Driveshaft Tubing - Metric	Pg 52
Balance Weights, UJ Bolt Kit Torque Specifications	Pg 53
UJ Torque Rating Guide	Pg 54

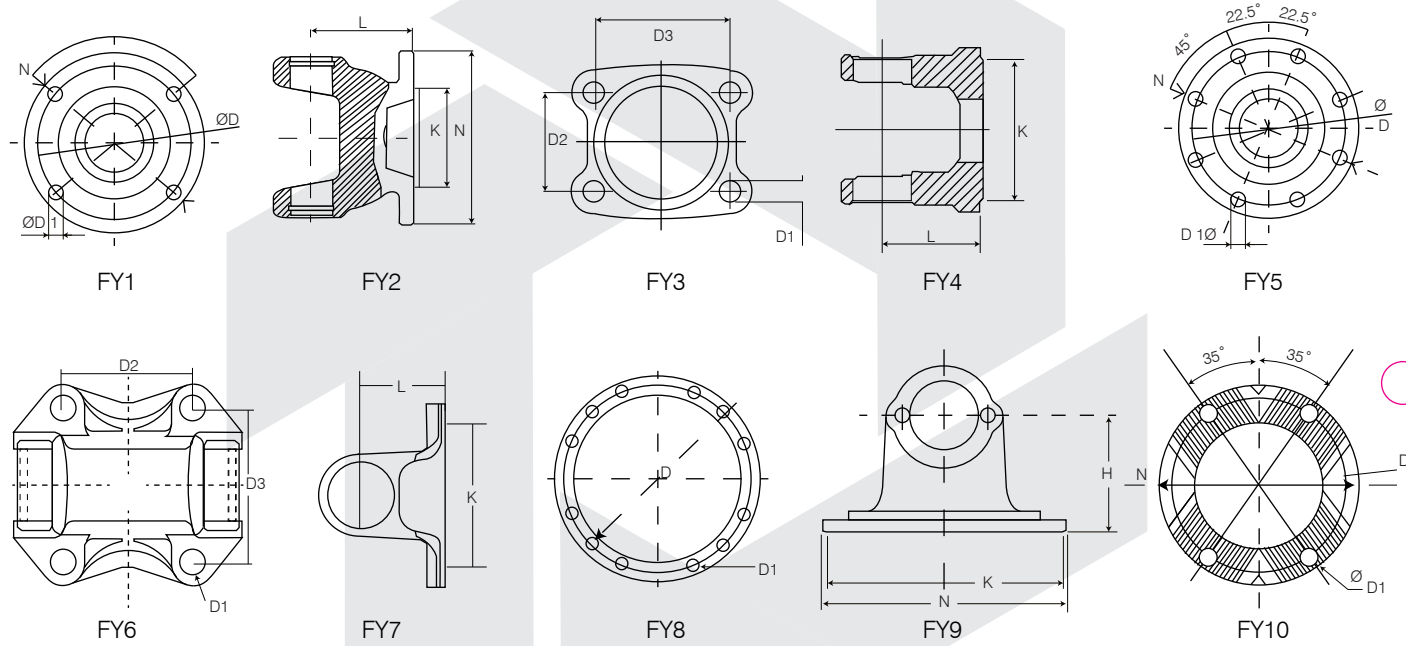
PLEASE CONTACT US TO CONFIRM AVAILABILITY OF LISTED COMPONENTRY. OTHER PARTS & SERIES NOT SHOWN MAY BE AVAILABLE ON APPLICATION - PLEASE ENQUIRE.

REFERENCE DRAWINGS

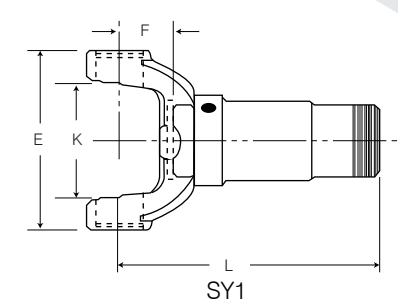
COMPANION FLANGES



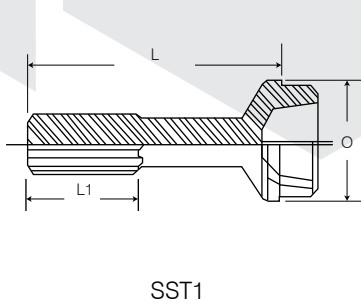
FLANGE YOKES



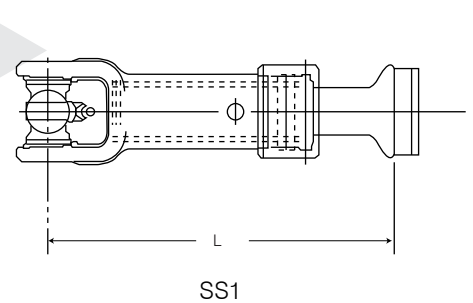
SLIP YOKES



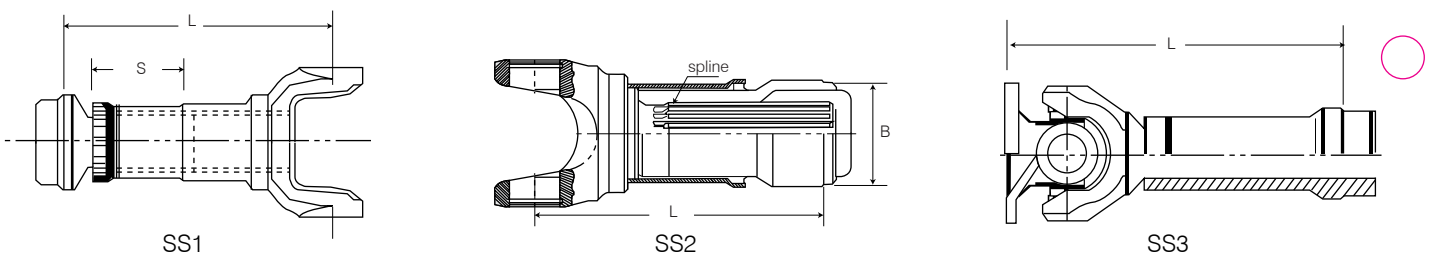
SLIP STUBS



SLIP SETS

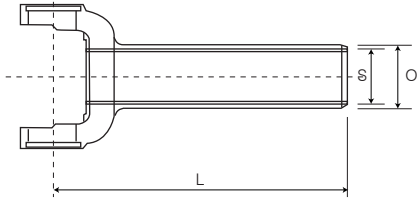


SLIP SETS



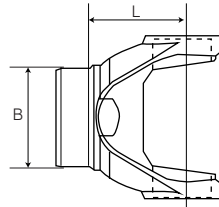
REFERENCE DRAWINGS

REVERSE SLIP YOKES



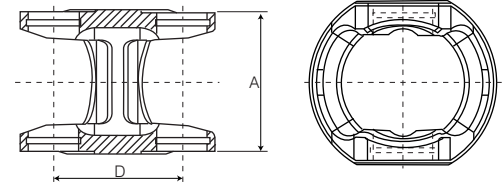
RS1

TUBE YOKES



TY1

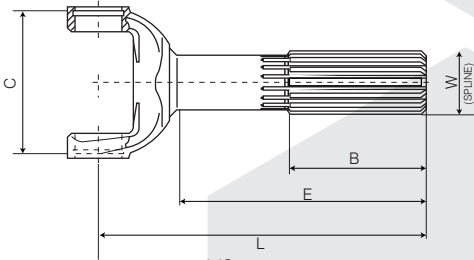
CENTRE YOKES



CY1

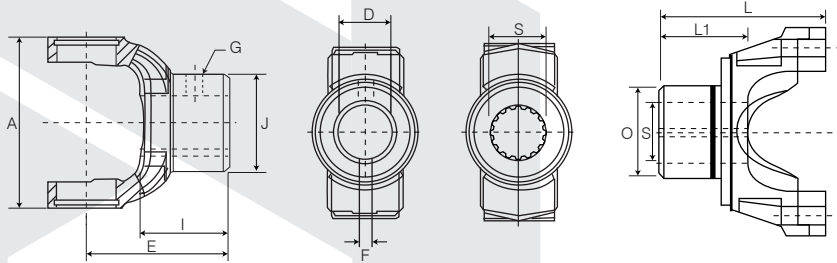
CY2

YOKE SHAFTS



YS1

END YOKES



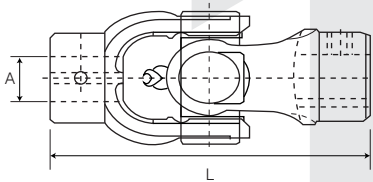
EY1

EY2

EY3

EY4

COUPLINGS



C1

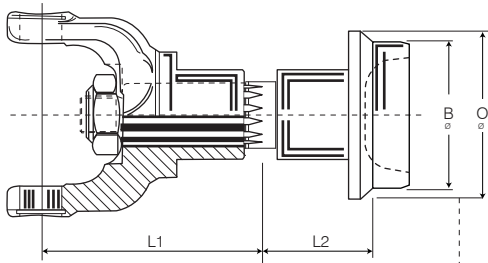
MIDSHIP STUBS



MS1

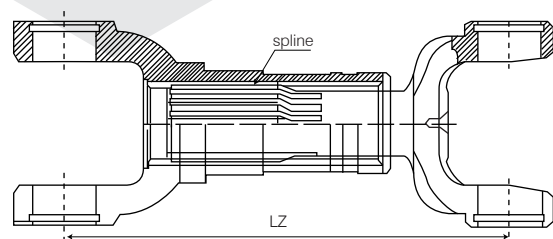
MS2

CENTRE BEARING ASSEMBLIES



CB1

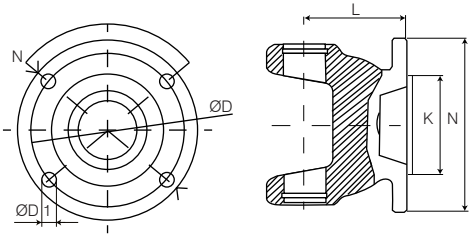
DRIVESHAFT & SHORT COUPLE SETS



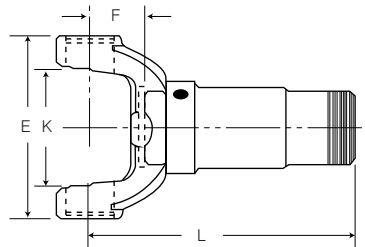
DS1

0500 SERIES - 19.05 X 52.00 MM

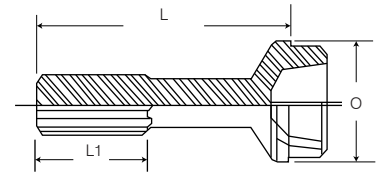
FLANGE YOKES



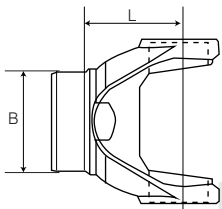
SLIP YOKES



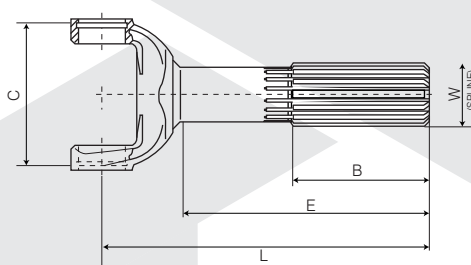
SLIP STUBS



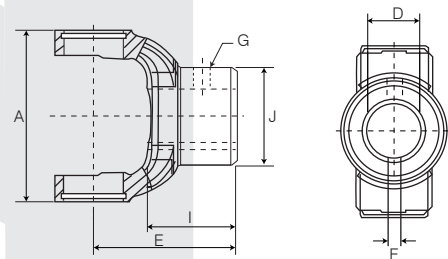
TUBE YOKES



YOKE SHAFTS



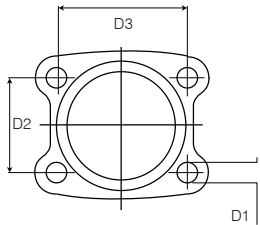
END YOKES



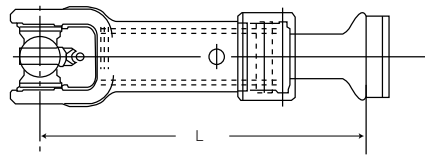
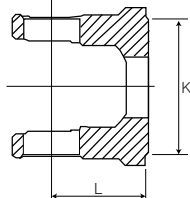
PART NO	ITEM DESCRIPTION	NOTES
UNIVERSAL JOINTS		
K5-A546	500 SERIES 19.05 X 52.00	
FLANGE YOKES		
0502-5546	500 SERIES DIN 65 - N = 65MM, D = 52MM, D1 = 6MM, K = 35MM	
SLIP YOKES		
0503-131	500 SERIES 1.062 X 16SPL - L=100MM	
SLIP STUBS		
K1-42-GB1901	500 SERIES 1.062 X 16SPL - O = 2.00, L = 104MM	
K1-42-GB1902	500 SERIES 1.062 X 16SPL - O = 2.50, L = 107MM	
K1-42-GB1903	500 SERIES 1.062 X 16SPL - O = 2.75, L = 146MM	
TUBE YOKES		
0526 -131	500 SERIES YOKE - 1.25 X .104, L = 42MM	
YOKE SHAFTS		
05-82-142	500 SERIES - 1.062 X 16SPL - L = 105MM	
END YOKES		
0504-001	500 SERIES SOLID YOKE	
0504-142B	500 SERIES 30MM BORE WITH KEYWAY	
DRIVESHAFTS		
05SF01	500 SERIES LZ = 190MM	

1000 SERIES - 23.80 X 38.10 MM

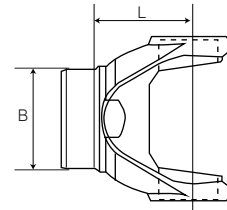
FLANGE YOKES



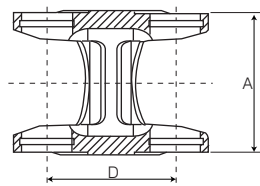
SLIP SETS



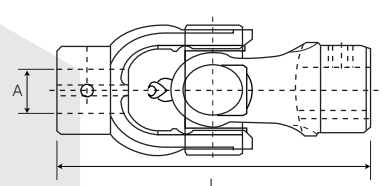
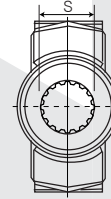
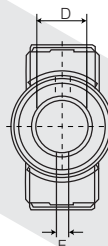
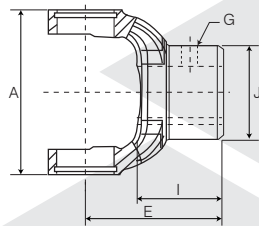
TUBE YOKES



CENTRE YOKES



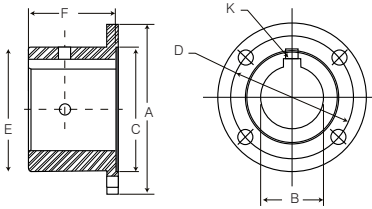
END YOKES / COUPLINGS



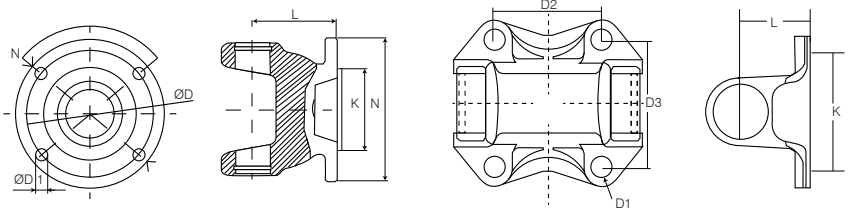
PART NO	ITEM DESCRIPTION	NOTES
UNIVERSAL JOINTS		
5-170X	1000 SERIES 23.8 X 38.1 IC	
5-170XSP	1000 SERIES 23.8 X 38.1 IC	HEAVY DUTY
5-170X-1A	1000 SERIES 23.8 X 38.1 IC	GREASE IN CAP
FLANGE YOKES		
10-0229	1000 SERIES STD	
SLIP SETS		
N10-18-1741	1000 SERIES L = 190MM APPROX. INCL. U/J	
TUBE YOKES		
10-28-97	1000 SERIES STEERING SHAFT YOKE	
CENTRE YOKES		
10-29-5303	1000 SERIES 43MM CENTRES	
10-5361	1000 SERIES 63MM CENTRES	
15-5331	1000 SERIES 80MM CENTRES	
END YOKES / COUPLINGS		
10-1005	1000 SERIES SOLID YOKE	
10-4-13	1000 SERIES .750 BORE & KEYWAY	
10-4-4841	1000 SERIES .813 C/W 1/2 WAY FLAT	
10-4-501SX	1000 SERIES .813 STEERING	
10-4-63	1000 SERIES .875 BORE & KEYWAY	
10-4-63C	1000 SERIES .875 COUPLING	
10-4-461SX	1000 SERIES .875 STEERING	
10-10250M	1000 SERIES 25MM BORE COUPLING	
10-4-371SX	1000 SERIES 1.00 STEERING	

1140 SERIES - 23.80 X 61.20 MM

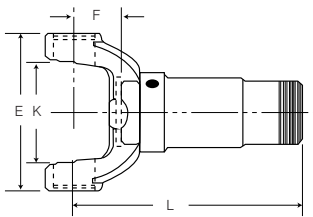
COMPANION FLANGES



FLANGE YOKES



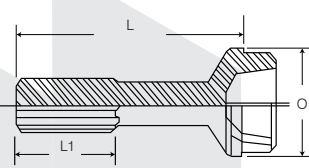
SLIP YOKES



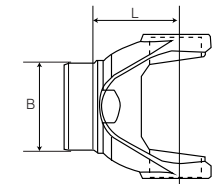
REVERSE SLIP YOKES



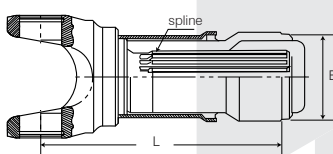
SLIP STUBS



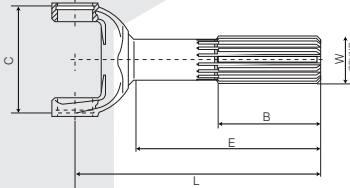
TUBE YOKES



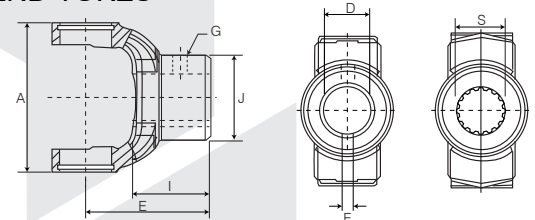
SLIP SETS



YOKE SHAFTS



END YOKES



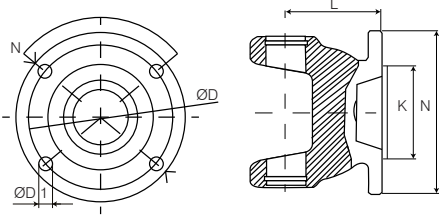
PART NO	ITEM DESCRIPTION	NOTES
UNIVERSAL JOINTS		
K5-GB80R	1140 SERIES 23.8 X 61.2	
K5-GB80RP	1140 SERIES 23.8 X 61.2	HEAVY DUTY
K5-GB80R-1A	1140 SERIES 23.8 X 61.2	GREASE IN CAP
K5-A64	1140 SERIES 23.8 X 61.2	PTO
K5-GB150	1140 SERIES 23.8 X 61.2	LFL
COMPANION FLANGES		
1-1-750	1140 SERIES - NON BORED	
FLANGE YOKES		
1-2-39	1140 SERIES STD	
1-2-MDP	REFER TO SLIP SETS / FIXED ENDS	
1402-2001	1140 SERIES - N = 87.3MM	BLANK
1402-2002	1140 SERIES - N = 110MM	BLANK
1402-1359	1140 SERIES DIN 75 - N = 75MM, D = 62MM, D1 = 8MM (X 6), K = 42MM	
1402-1369	1140 SERIES DIN 90 - N = 90MM, D = 74.5MM, D1 = 8MM (X 4), K = 47MM	
1402-1379	1140 SERIES LARGE CORTINA - D2 = 67MM, D3 = 60MM, K = 56MM	
1402-459	1140 SERIES MARINA - D = 76.1MM	
1402-713	1140 SERIES SUZUKI	

1140 SERIES - 23.80 X 61.20 MM

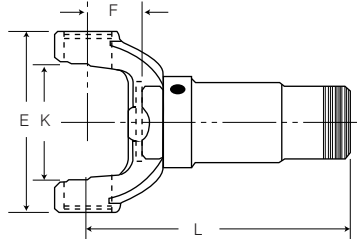
PART NO	ITEM DESCRIPTION	NOTES
SLIP YOKES		
K1-3-A360	1140 SERIES - 1.062 X 16SPL - L = 110MM	
1403-6200	1140 SERIES W/A - L = 135MM	
SLIP STUBS		
K1-42-GB1901	1140 SERIES 1.062 X 16SPL - O = 2.00, L = 104MM	
K1-42-GB1902	1140 SERIES 1.062 X 16SPL - O = 2.50, L = 107MM	
K1-42-GB1903	1140 SERIES 1.062 X 16SPL - O = 2.75, L = 146MM	
SLIP SETS		
1-6-001E	1140 SERIES - 2.00 TUBE, L = 160MM	EURO SPLINE
1-6-MDP	1140 SERIES MDP SLIP END	
REVERSE SLIP YOKES		
1403-1518	1140 SERIES CORTINA - S = 25SPL, O = 34.8MM SEAL	
TUBE YOKES		
K1-26-GB17	1140 SERIES - 2.00 X .065	
K1-26-GB17A	1140 SERIES - 2.00 X .095	
K1-26-GB67	1140 SERIES - 2.50 X .065	
K1-26-GB137	1140 SERIES - 2.75 X .065	
K1-26-GB717	1140 SERIES - 3.00 X .065	
FIXED END		
1-7-MDP	1140 SERIES SMALL JAPANESE BOLTING 25 X 50	
YOKE SHAFTS		
1-82-21	1140 SERIES 1.062 X 16SPL L = 97MM	
1482-2001	1140 SERIES 1.062 X 16SPL L = 110MM	
END YOKES		
1404-007	1140 SERIES SOLID YOKE	
1404-016	1140 SERIES FORD H=80.2MM - 29.6MM, 26SPL	
K1-4-0258	1140 SERIES 25MM BORE & KEYWAY	
K1-4-0308	1140 SERIES 30MM BORE & KEYWAY	
DRIVESHAFTS		
14SF01	1140 SERIES LZ = 180MM	
14A0021500	1140 SERIES UNWELDED ONE END LZ = 1720MM	
SMALL PARTS		
DCK14A	1140 SERIES STANDARD TYPE DUST CAP	
D1A	1140 SERIES CRIMP TYPE DUST CAP	

1210 SERIES - 26.99 X 61.93 MM

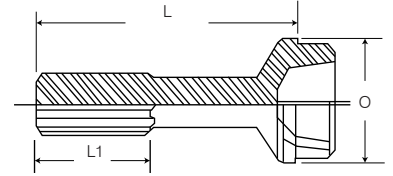
FLANGE YOKES



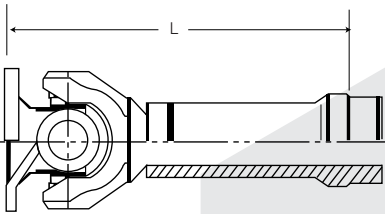
SLIP YOKES



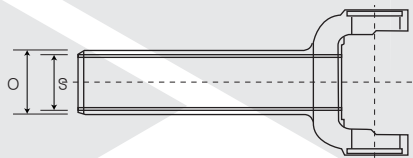
SLIP STUBS



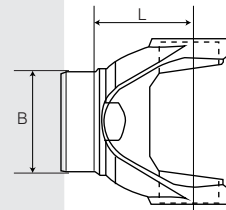
SLIP SETS



REVERSE SLIP YOKES



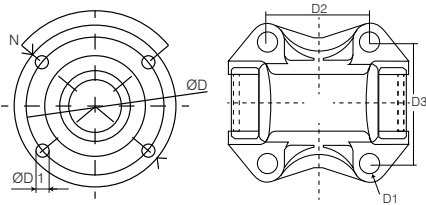
TUBE YOKES



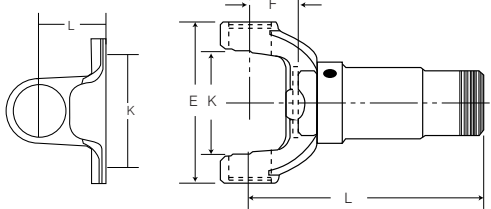
PART NO	ITEM DESCRIPTION	NOTES
UNIVERSAL JOINTS		
5-443X	1210 SERIES 26.99 X 61.93	
FLANGE YOKES		
2-2-899	1210 SERIES 1140 FACE - N = 87.30MM, D = 69.85MM, D1 = 7.92MM, K = 57.15MM	
SLIP YOKES		
2-3-8861KX	1210 SERIES - 1.25 X 16SPL - L = 162.5MM	
SLIP STUBS		
2-40-1741	1210 SERIES - 1.25 X 16SPL - L = 152.4MM	
SLIP SETS		
1210-6	1210 SERIES - L = 195MM INCL. FLANGE	
REVERSE SLIP YOKES		
2-3-1224X	1210 SERIES NISSAN - S = 24 SPL , O = 38MM SEAL	
TUBE YOKES		
2-28-2417	1210 SERIES - 2.00 X .083	
2-28-1947	1210 SERIES - 2.50 X .065	
FIXED END		
1210-226	1210 SERIES -1140 FACE FIXED END	

1300 SERIES - 26.99 X 74.61 MM

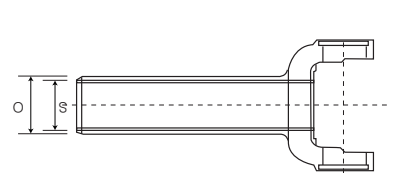
FLANGE YOKES



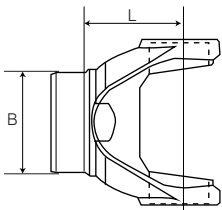
SLIP YOKES



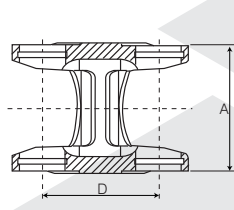
REVERSE SLIP YOKES



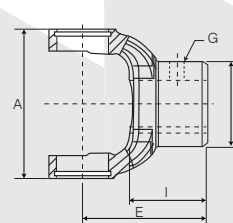
TUBE YOKES



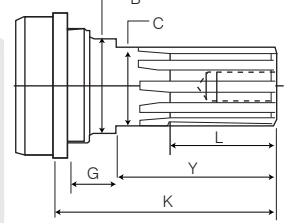
CENTRE YOKES



END YOKES



MIDSHIP STUBS



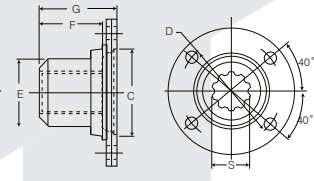
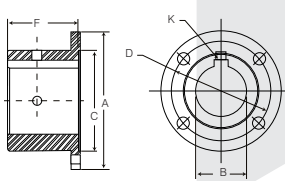
PART NO	ITEM DESCRIPTION	NOTES
UNIVERSAL JOINTS		
K5-L4R	1300 SERIES 26.99 X 74.61	
K5-L4RP	1300 SERIES 26.99 X 74.61	HEAVY DUTY
K5-GB36R	1300 SERIES 26.99 X 74.61	AGRICULTURAL
FLANGE YOKES		
3002-239	1300 SERIES STD - N = 96.80MM, D = 79.37MM, D1 = 9.53MM, K = 60.33MM	
3002-002	1300 SERIES ISUZU - D2 = 50.00MM, D3 = 69.00MM, K = 65.00MM	
3002-024	1300 SERIES TRANSIT - D2 = 83.00MM, D3 = 48.00MM, K = 56.00MM	
3002-1409	1300 SERIES LARGE CORTINA - D2 = 67.00MM, D3 = 60.00MM, K = 56.00MM	
3002-029	1300 SERIES SUZUKI - D2 = 60.00MM, D3 = 60.00MM, K = 45.00MM	
SLIP YOKES		
3003-068	1300 SERIES - 1.375 X 16 SPL - L = 137MM	
REVERSE SLIP YOKES		
3003-1518	1300 SERIES - FORD - S = 25SPL , O = 34.8MM SEAL	
3003-103	1300 SERIES - S = 27SPL , O = 38MM SEAL	
TUBE YOKES		
3026-2057	1300 SERIES - 1.75 X .065	
3026-2607	1300 SERIES - 2.00 SOLID	
3026-2003	1300 SERIES - 2.50 SOLID BASE	
3026-275	1300 SERIES - 2.75 X .065	
3026-1567	1300 SERIES - 3.00 X .065	
CENTRE YOKES		
3099-070	1300 SERIES 69MM CENTRES	

1300 SERIES - 26.99 X 74.61 MM

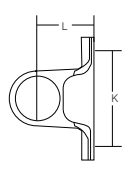
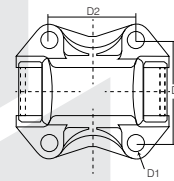
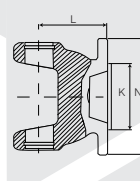
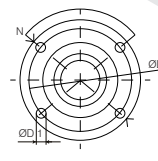
PART NO	ITEM DESCRIPTION	NOTES
END YOKES		
3004-006	1300 SERIES 23SPL C/BEARING	
MIDSHIP STUBS		
3157-30	1300 SERIES MIDSHIP TO SUIT 3004-006	30MM BEARING
DOUBLE CARDAN PARTS		
3048-674	1300 SERIES LANDROVER DISCOVERY D/C ASSY	

1310 SERIES - 26.99 X 81.76 MM

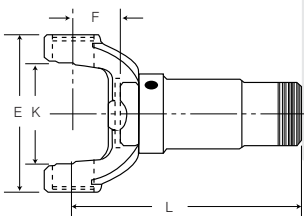
COMPANION FLANGES



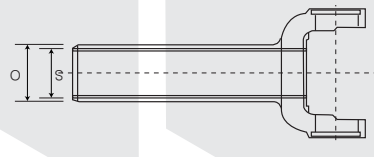
FLANGE YOKES



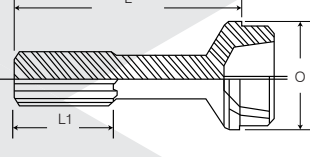
SLIP YOKES



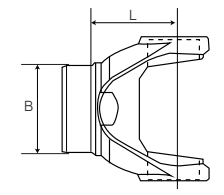
REVERSE SLIP YOKES



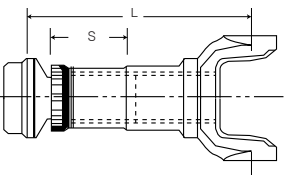
SLIP STUBS



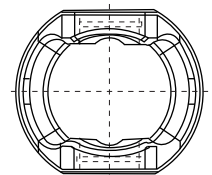
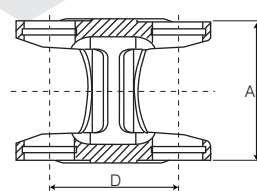
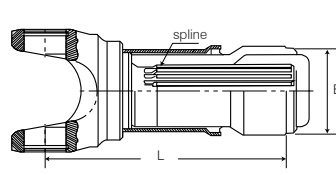
TUBE YOKES



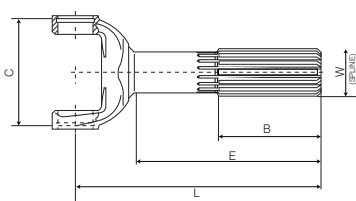
SLIP SETS



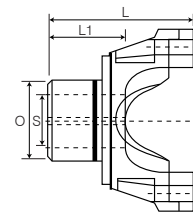
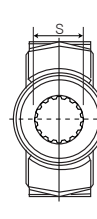
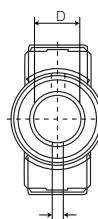
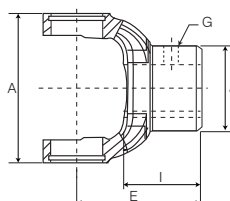
CENTRE YOKES



YOKE SHAFTS

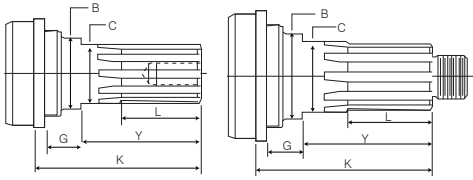


END YOKES

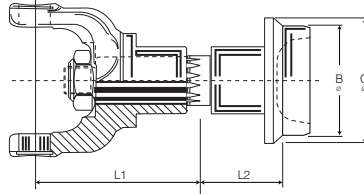


1310 SERIES - 26.99 X 81.76 MM

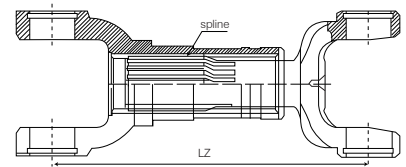
MIDSHIP STUBS



CENTRE BEARING ASSEMBLIES



SHORT COUPLE SETS



PART NO	ITEM DESCRIPTION	NOTES
UNIVERSAL JOINTS		
K5-13XR	1310 SERIES 26.99 X 81.76	
K5-13XR-1A	1310 SERIES 26.99 X 81.76	GREASE IN CAP
K5-13XRR	1310 SERIES 26.99 X 81.76	THRUST WASHERS
5-625XSP	1310 SERIES 26.99 X 81.76	PERFORMANCE / LFL
RUJ-2027	1310 SERIES 26.99 X 60.32 IC	FORD CLEVELAND
RUJ-2027SP	1310 SERIES 26.99 X 60.32 IC	FORD CLEVELAND / LFL
RUJ-2032	1310 SERIES TO 2R 25.4 X 59.44 IC / 26.99 X 81.76	
K5-A530	1310 SERIES TO 21R 26.99 X 81.76 / 27.38 X 54 IC	
5-150X	1310 SERIES TO 3R 26.99 X 81.76 / 28.58 X 65.10 IC	
5-150XSP	1310 SERIES TO 3R 26.99 X 81.76 / 28.58 X 65.10 IC	LFL / PERFORMANCE
RUJ-2039	1310 SERIES TO 9" FORD 26.99 X 81.76 / 28.58 X 81.76	
RUJ-2039SP	1310 SERIES TO 9" FORD 26.99 X 81.76 / 28.58 X 81.76	LFL / PERFORMANCE
5-150XNF	1310 SERIES TO 9" 26.99 X 81.76 / 28.58 X 92.08	
5-460X	1310 SERIES TO 1350 26.99 X 81.76 / 30.16 X 92.08	
5-291X	1310 SERIES TO 2C 26.99 X 81.76 / 33.34 X 59.53	
5-134X	1310 SERIES TO 1330 26.99 X 92.06 / 26.99 X 81.76	
5-134XSP	1310 SERIES TO 1330 26.99 X 92.06 / 26.99 X 81.76	LFL / PERFORMANCE
K5-A522/13XR	1310 SERIES / DAIHATSU 28 X 80 / 26.99 X 81.76	
RUJ-2100-13XR	1310 SERIES / TOYOTA 29 X 52 IC / 26.99 X 81.76	
RUJ-2033/13XR	1310 SERIES / ISUZU 29 X 53.1 IC / 26.99 X 81.76	
COMPANION FLANGES		
2-1-750	1310 SERIES - NON BORED	
2-1-1313	1310 SERIES - PILOT BORE	
2-1-1323	1310 SERIES - PILOT BORE THREADED HOLES	98MM DIAMETER HUB
2-1-293	1310 SERIES - 1.125 BORE WITH KEYWAY	
2-1-1313-4	1310 SERIES - 1.250 BORE WITH KEYWAY	
2-1-1313-6	1310 SERIES - 1.375 BORE WITH KEYWAY	
3101-2831	1310 SERIES - 1.375 X 10SPL C/BRG	
2-1-A2289	1310 SERIES - 1.375 X 10 SPL S/F C/BRG	
2-1-2831-1SF	1310 SERIES - 1.375 X 10 SPL S/F C/BRG 125 MM DIA	BLANK

1310 SERIES - 26.99 X 81.76 MM

PART NO	ITEM DESCRIPTION	NOTES
FLANGE YOKES		
2-2-329	1310 SERIES STD - N = 96.80MM, D = 79.37MM, D1 = 9.53MM, K = 60.33MM	
2-2-459	1310 SERIES - N = 96.80MM, D = 79.37MM, D1 = 9.53MM, K = 60.33MM	WIDE ANGLE
2-2-100	1310 SERIES 100MM - N = 100MM	BLANK
2-2-10068	1310 SERIES 100 DIN - N = 100MM, D = 84.00MM, D1 = M8 (X 6), K = 57.00MM	
2-2-125	1310 SERIES 120MM - N = 120MM	BLANK
2-2-61	1310 SERIES / FORD TRANSIT - D2 = 48.00MM, D3 = 83.20MM, K = 56.00MM	
2-2-62	1310 SERIES / MDP-PTO - D2 = 60.00MM, D3 = 35.00MM, K = 42.00MM	
2-2-1309	1310 SERIES / NISSAN - D2 = 57.00MM, D3 = 57.00MM, K = 50.00MM	
2-2-352-75M	1310 SERIES / TCM - D2 = 64.00MM, D3 = 77.00MM, K = 75.00MM (MALE)	
SLIP YOKES		
2-3-128KX	1310 SERIES - 1.375 X 16SPL - L = 137MM	
2-3-4951KX	1310 SERIES - 1.375 X 16SPL - L = 152MM	
2-3-5221KX	1310 SERIES - 1.375 X 16SPL - L = 175MM	
2-3-5821KX	1310 SERIES - 1.375 X 16SPL - L = 200MM	
SLIP STUBS		
2-40-1031	1310 SERIES - 1.375 X 16SPL - O = 2.00, L = 132MM	
3142-3081	1310 SERIES - 1.375 X 16SPL - O = 2.00, L = 190MM	
2-40-1041	1310 SERIES - 1.375 X 16SPL - O = 2.50, L = 136MM	
2-40-1851	1310 SERIES - 1.375 X 16SPL - O = 2.50, L = 192MM	
2-40-1211	1310 SERIES - 1.375 X 16SPL - O = 3.00, L = 129MM	
SLIP SETS		
2-6-01	1310 SERIES - 2.00 TUBE, L = 160MM	
2-6-001E	1310 SERIES - 2.00 TUBE, L = 160MM	EURO SPLINE
2-6-002E	1310 SERIES - 2.50 TUBE, L = 210MM	EURO SPLINE
2-6-003E	1310 SERIES - 3.00 TUBE, L = 215MM	EURO SPLINE
REVERSE SLIP YOKES		
2-3-9701X	1310 SERIES TOYOTA - S = 21SPL , O = 38MM SEAL	
2-3-6081X	1310 SERIES T350 - S = 27SPL, O = 38MM SEAL	1310 - 2R HOLDEN / T350
2-3-4871X	1310 SERIES C4 - S = 28SPL, O = 38MM SEAL	FORD C4
2-3-13311KX	1310 SERIES NISSAN - S = 30SPL , O = 41.9MM SEAL	NISSAN / VL TURBO
2-3-3575X	1310 SERIES CHRYSLER 727 - S = 30SPL , O = 42.8MM SEAL	C/BORE
2-3-9131X	1310 SERIES T400 - S = 32SPL, O = 47.87MM SEAL	TURBO 400 - C/BORE
2-3-8431HP	1310 SERIES HIGH PERFORMANCE FORGED - S = 25SPL, O = 34.93MM SEAL	C4
2-3-6081HP	1310 SERIES HIGH PERFORMANCE FORGED - S = 27SPL, O = 38.10MM SEAL	
2-3-8251HP	1310 SERIES HIGH PERFORMANCE FORGED - S = 28SPL, O = 38.10MM SEAL	FORD
2-3-10431HP	1310 SERIES HIGH PERFORMANCE FORGED - S = 32SPL, O = 47.63MM SEAL	T400

1310 SERIES - 26.99 X 81.76 MM

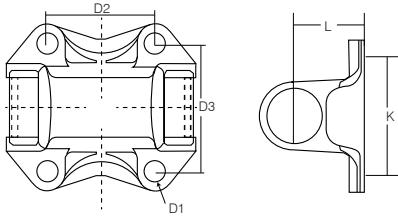
PART NO	ITEM DESCRIPTION	NOTES
TUBE YOKES		
2-28-357	1310 SERIES - 2.00 X .083	
2-28-357S	1310 SERIES - 2.00 SOLID	
2-28-277	1310 SERIES - 2.50 X .065	
2-28-367	1310 SERIES - 2.50 X .083	
3126-2015	1310 SERIES - 2.50 SOLID	
2-28-307	1310 SERIES - 2.75 X .065	
2-28-307S	1310 SERIES - 2.75 SOLID	
2-28-327	1310 SERIES - 3.00 X .065	
2-28-327S	1310 SERIES - 3.00 SOLID	
2-28-327L	1310 SERIES - 3.00 WIDE ANGLE	
2-28-437	1310 SERIES - 3.00 X .083	
2-28-557	1310 SERIES - 3.25 X .065	
2-28-397	1310 SERIES - 3.50 X .065	
2-28-427	1310 SERIES - 3.50 X 0.083	
2-28-2947X	1310 SERIES - PIN YOKE	
2-28-347	1310 SERIES - SOLID AXLE TYPE	
CENTRE YOKE		
2-26-367	1310 SERIES 68MM CENTRES	
YOKE SHAFTS		
2-82-21	1310 SERIES - 1.375 X 16SPL, L = 125MM	
2-82-22	1310 SERIES - 1.375 X 16SPL, L = 140MM	
2-82-A111	1310 SERIES - 1.375 X 16SPL, L = 165MM	
2-82-001	1310 SERIES - 1.375 X 16SPL, L = 185MM	
END YOKES		
2-4-3104-06	1310 SERIES 9" FORD 28 SPLINE	FORD 9" DIFF/ 28.58 CAP
2-4-3104-06L	1310 SERIES 9" FORD 28 SPLINE, L=128MM	FORD 9" DIFF / RUJ-2039
2-4-3104-28	1310 SERIES 9" FORD 28 SPLINE - FORGED	FORD 9" DIFF/ 27.00 CAP
2-3-1731	1310 SERIES 1.375 X 10SPL	SUIT JET BOAT
2-4-5341X	1310 SERIES 1.375 X 32SPL	
2-4-473	1310 SERIES 1.00 BORE & KEYWAY	
2-4-533	1310 SERIES 1.250 BORE & KEYWAY	
2-4-3331	1310 SERIES 13 SPLINE PTO	
3104-005	1310 SERIES SOLID YOKE	
3104-010	1310 SERIES END YOKE 26SPL, L = 76MM	

1310 SERIES - 26.99 X 81.76 MM

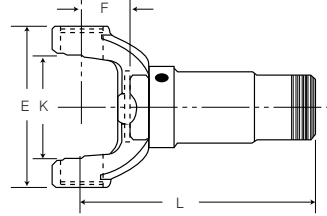
PART NO	ITEM DESCRIPTION	NOTES
MIDSHIP STUBS		
K2 -57-007	1310 SERIES 35MM BRG 1.375 X 10SPL 2.50 TUBE	
3-53-1351	1310 SERIES 35MM BRG 1.375 X 16SPL 2.50 TUBE	
3-53-1031	1310 SERIES 1.50 X 16 SPL TO SUIT 3.00 X 0.083	
3157 -3026	1310 SERIES MIDSHIP TO SUIT 3104-010 END YOKE	
CENTRE BEARINGS		
CB-35168-1	1310 SERIES / 35MM BEARING - HEAVY DUTY	
MIDSHIP C/BEARING ASSEMBLIES		
2-8-30001	1310 SERIES END YOKE ASSY 30MM BRG / 60MM TUBE	
2-8-30002	1310 SERIES END YOKE ASSY 30MM BRG / 3.00 TUBE	
2-8-35001	1310 SERIES END YOKE ASSY 35MM BRG / 3.00 TUBE	
2-8-45001	1310 SERIES SLIDING ASSY 45MM BRG / 3.00 TUBE	
DRIVESHAFTS & SHORT COUPLE SETS		
31SF02	1310 SERIES LZ = 190MM	
31SF01	1310 SERIES LZ = 230MM	
31A0021500	1310 SERIES LZ = 1770MM	UNWELDED ONE END
2-03-130LZ	1310 SERIES SHORT COUPLED LZ = 130 - 180MM	
2-03-145LZ	1310 SERIES SHORT COUPLED LZ = 145 - 185MM	
2-03-220LZ	1310 SERIES SHORT COUPLED LZ = 220 - 285MM	
DOUBLE CARDAN PARTS		
3102-393CV	1310 SERIES DOUBLE CARDAN FLANGE 100MMCV BLT	
SCV-82	1310 SERIES YOKE & BALL COMPLETE	
SCV-82NG	1310 SERIES BALL KIT N/G	
2-86-418	1310 SERIES BALL SEAL	
SPLINED BAR / SPLINED SLEEVES		
3142-35X16	1310 SERIES MALE SPLINE 1.375 X 16SPL - L = 300MM	
2-55-A0118	1310 SERIES SLEEVE 1.375 X 16SPL - L = 150MM	
SMALL PARTS		
102	1310 SERIES 1.063 U/BOLT CLAMP KIT 36MM CENTRES	
105	1310 SERIES 1.125 U/BOLT CLAMP KIT 40MM CENTRES	
105L	1310 SERIES 1.125 U/BOLT CLAMP KIT 40MM CENTRES	LONG
2-70-18X	1310 SERIES U/BOLT CLAMP KIT 40MM CENTRES	
0072-0859	1310 SERIES SPLIT PIN	
0074-12161	1310 SERIES CASTLE NUT	
0075-12159	1310 SERIES MIDSHIP WASHER	
D3A	1310 SERIES STANDARD TYPE DUST CAP	
D3E	1310 SERIES SPLINED TYPE DUST CAP	

1330 SERIES - 26.99 X 92.08 MM

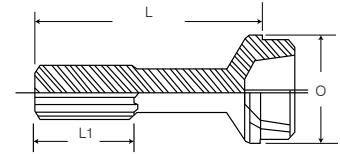
FLANGE YOKES



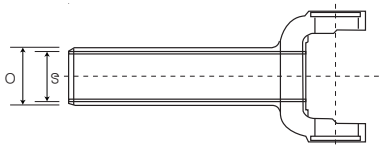
SLIP YOKES



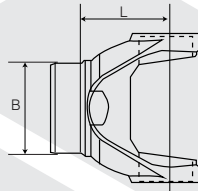
SLIP STUBS



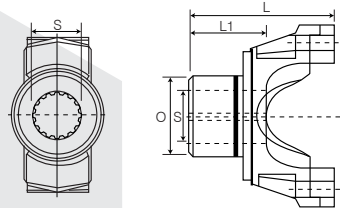
REVERSE SLIP YOKES



TUBE YOKES



END YOKES



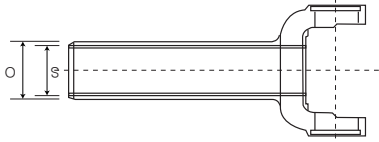
PART NO	ITEM DESCRIPTION	NOTES
UNIVERSAL JOINTS		
RUJ-3002	1330 SERIES 26.99 X 92.08	
RUJ-3002SP	1330 SERIES 26.99 X 92.08	LFL
5-618XSP	1330 SERIES PERFORMANCE 26.99 X 92.08	LFL
5-134X	1330 SERIES TO 1310 26.99 X 92.08 / 26.99 X 81.76	
5-134XSP	1330 SERIES TO 1310 26.99 X 92.08 / 26.99 X 81.76	LFL
K5-A537	1330 SERIES TO 1350 26.99 X 92.08 / 30.16 X 92.08	
114-596	1330 SERIES TO 3R 26.99 X 92.08 / 28.58 X 65.10 IC	
114-596SP	1330 SERIES TO 3R 26.99 X 92.08 / 28.58 X 65.10 IC	LFL
RUJ-3000	1330 SERIES TO 9" 26.99 X 92.08 / 28.58 X 92.08	
RUJ-3000SP	1330 SERIES TO 9" 26.99 X 92.08 / 28.58 X 92.08	LFL
FLANGE YOKES		
2-2-489	1330 SERIES STD - D2 = 61.20MM, D3 = 72.90MM, K = 69.85MM	
SLIP YOKES		
2-3-7961KX	1330 SERIES - 1.375 X 16SPL - L = 152MM	
2-3-7481KX	1330 SERIES - 1.375 X 16SPL - L = 190.5MM	
SLIP STUBS		
2-40-2431	1330 SERIES - 1.375 X 16SPL - 2.00 L = 130MM	
2-40-1031	1330 SERIES - 1.375 X 16SPL - 2.00 L = 132MM	
3142-3081	1330 SERIES - 1.375 X 16SPL - 2.00 L = 190MM	
2-40-1041	1330 SERIES - 1.375 X 16SPL - 2.50 L = 136MM	
2-40-1851	1330 SERIES - 1.375 X 16SPL - 2.50 L = 192MM	
2-40-1211	1330 SERIES - 1.375 X 16SPL - 3.00 L = 129MM	
2-40-2741	1330 SERIES - 1.375 X 16SPL - 3.00 L = 135MM	

1330 SERIES - 26.99 X 92.08 MM

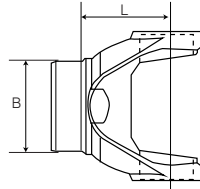
PART NO	ITEM DESCRIPTION	NOTES
REVERSE SLIP YOKES		
2-3-5981X	1330 SERIES FORD C4	
2-3-6041X	1330 SERIES FORD C6 - S = 31SPL, O = 42.7MM SEAL	
2-3-5981HP	1330 SERIES HIGH PERFORMANCE FORGED - S = 28SPL, O = 38.10MM SEAL	FORD
2-3-6041HP	1330 SERIES HIGH PERFORMANCE FORGED - S = 31SPL, O = 42.67MM SEAL	C6
TUBE YOKES		
2-28-1707	1330 SERIES - 2.50	
2-28-1177	1330 SERIES - 3.00	
2-28-1977	1330 SERIES - 3.50 X .065	
2-28-2137X	1330 SERIES PIN YOKE	
END YOKES		
2-4-3304-10	1330 SERIES 10SPL MIDSHIP YOKE	
2-4-3304-06	1330 SERIES 9" FORD 28 SPLINE	
2-4-3304-06LONG	1330 SERIES 9" FORD 28 SPLINE - LONG	
DOUBLE CARDAN PARTS		
211889X	1330 SERIES DOUBLE CARDAN WINCH SHAFT FLANGE	
SCV-79	1330 SERIES YOKE & BALL COMPLETE	
SMALL PARTS		
102	1330 SERIES 1.063 U/BOLT CLAMP KIT 36MM CENTRES	
105	1330 SERIES 1.125 U/BOLT CLAMP KIT 40MM CENTRES	
105L	1330 SERIES 1.125 U/BOLT CLAMP KIT 40MM CENTRES	LONG
2-70-18X	1330 SERIES U/BOLT CLAMP KIT 40MM CENTRES	
0072-0859	1330 SERIES SPLIT PIN	
0074-12161	1330 SERIES CASTLE NUT	
0075-12159	1330 SERIES MIDSHIP WASHER	
D3A	1330 SERIES STANDARD TYPE DUST CAP	
D3E	1330 SERIES SPLINED TYPE DUST CAP	

3R SERIES - 28.58 X 65.10 MM

REVERSE SLIP YOKES



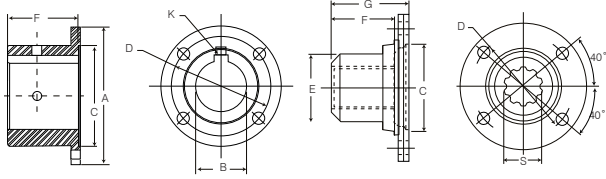
TUBE YOKES



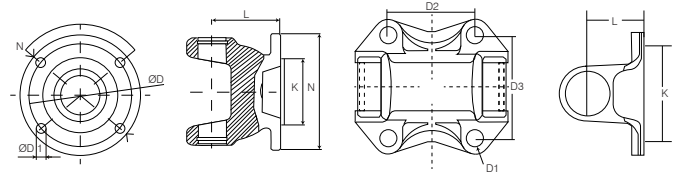
PART NO	ITEM DESCRIPTION	NOTES
UNIVERSAL JOINTS		
114-3105	3R SERIES 28.58 X 65.10 IC	
114-3105-1A	3R SERIES 28.58 X 65.10 IC	GREASE IN CAP
114-3105SP	3R SERIES 28.58 X 65.10 IC	LFL
5-811X	3R SERIES 28.58 X 65.10 IC PERFORMANCE	HEAVY DUTY
5-150X	3R SERIES TO 1310 28.58 X 65.10 IC / 26.99 X 81.76	
5-150XSP	3R SERIES TO 1310 28.58 X 65.10 IC / 26.99 X 81.76	LFL
114-596	3R SERIES TO 1330 28.58 X 65.10 IC / 26.99 X 92.06	
114-596SP	3R SERIES TO 1330 28.58 X 65.10 IC / 26.99 X 92.06	LFL
901153	3R SERIES TO 1350 28.58 X 65.10 IC / 30.16 X 92.06	
405001	3R SERIES TO CHRYSLER 28.58 X 65.10 / 28.58 X 66.67	
903049	3R SERIES TO 9" 28.58 X 65.10 IC / 28.58 X 92.08	
114-3102	3R SERIES TO 3C 2LWT 28.58 X 65.10 IC / 36.52 X 69.85	
114-3120	3R SERIES TO 3C 2HWD 28.58 X 65.10 IC / 36.52 X 69.85	
REVERSE SLIP YOKES		
3R-3-6081X	3R SERIES T350 - S = 27SPL, O = 38MM SEAL	
3R-3-9131X	3R SERIES T400 - S = 32SPL, O = 47.9MM SEAL	
3R-3-6081HP	3R SERIES HIGH PERFORMANCE FORGED - S = 27SPL, O = 38.10MM SEAL	T350
3R-3-9131HP	3R SERIES HIGH PERFORMANCE FORGED - S = 32SPL, O = 47.63MM SEAL	T400 / COUNTER BORE
3R-3-9161HP	3R SERIES HIGH PERFORMANCE FORGED - S = 32SPL, O = 47.63MM SEAL	T400 / FULL SPLINE
TUBE YOKES		
3R-28-307	3R SERIES - 2.75 X .065	
3R-28-327	3R SERIES - 3.00 X .065	
3R-28-325	3R SERIES - 3.25 X .065	
3R-28-397	3R SERIES - 3.50 X .065	
DOUBLE CARDAN PARTS		
4137268	3R SERIES COMPLETE ASSEMBLY	
CVK-2A	3R SERIES BALL KIT	SUITS V8 LANDROVER
SMALL PARTS		
108	3R SERIES SADDLE TYPE CLAMP KIT 46MM CENTRES	

1350 SERIES - 30.16 X 92.08 MM

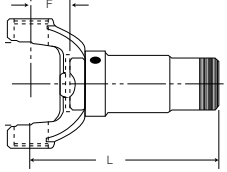
COMPANION FLANGES



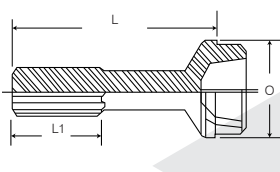
FLANGE YOKES



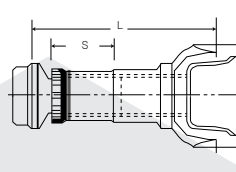
SLIP YOKES



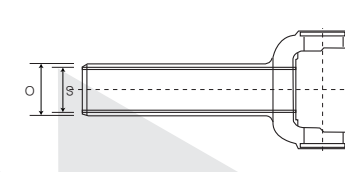
SLIP STUBS



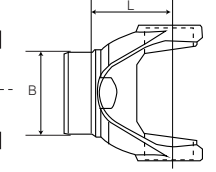
SLIP SETS



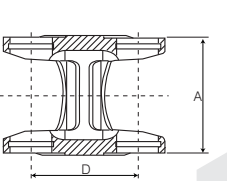
REVERSE SLIP YOKES



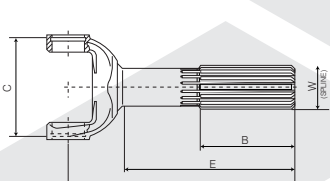
TUBE YOKES



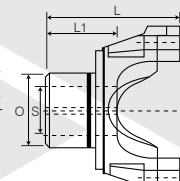
CENTRE YOKES



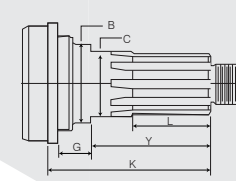
YOKE SHAFTS



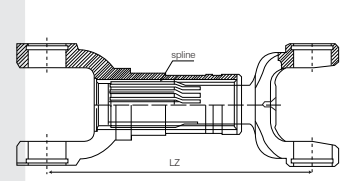
END YOKES



MIDSHIP STUBS



DRIVESHAFTS



PART NO	ITEM DESCRIPTION	NOTES
UNIVERSAL JOINTS		
5-178X	1350 SERIES 30.16 X 92.08	
5-178XR	1350 SERIES 30.16 X 92.08	THRUST WASHERS
5-178XSP	1350 SERIES 30.16 X 92.08 N/G	LFL
5-627XSP	1350 SERIES 30.16 X 92.08	HEAVY DUTY
5-460X	1350 SERIES TO 1310 26.99 X 81.76 / 30.16 X 92.08	
901153	1350 SERIES TO 3R 28.58 X 65.11C / 30.16 X 92.08	
K5-A541	1350 SERIES TO 9" FORD 30.16 X 92.08 / 28.58 X 92.08	
K5-A18R	1350 SERIES 30.16 X 92.08	AGRICULTURAL
K5-A537	1350 SERIES TO 1330 30.16 X 92.08 / 26.99 X 92.08	
COMPANION FLANGES		
3-1-1013	1350 SERIES - NON BORED	
K3-1-A750	1350 SERIES - NON BORED	
3-1-1023	1350 SERIES - PILOT BORE THREADED HOLES	FULL DIAMETER
3-1-163	1350 SERIES - 1.25 BORE 0.31 KEYWAY	
3-1-1013-4	1350 SERIES - 1.25 BORE 0.31 KEYWAY	
3-1-1013-6	1350 SERIES - 1.375 BORE 0.38 KEYWAY	
K3-1-A0191	1350 SERIES - 1.50 X 10 SPL C/BRG	
84/F3CLC04	1350 SERIES - 1.00 X 15 SPL CLAMPLOCK	
84/F3CLC06	1350 SERIES - 1.25 X 14 SPL CLAMPLOCK	
84/F3CLC33	1350 SERIES - 1.375 X 6 SPL CLAMPLOCK	
84/F3CLC07	1350 SERIES - 1.375 X 21 SPL CLAMPLOCK	

1350 SERIES - 30.16 X 92.08 MM

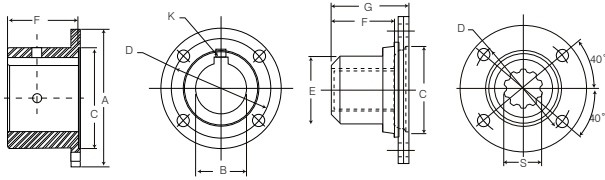
PART NO	ITEM DESCRIPTION	NOTES
COMPANION FLANGES		
84/F3CLC43	1350 SERIES - 1.50 X 23 SPL CLAMPLOCK	
FLANGE YOKES		
3-2-119	1350 SERIES STD - D2 = 61.20MM, D3 = 72.90MM, K = 69.85MM	
3-2-119WA	1350 SERIES 1410 BOLTING - D2 = 61.20MM, D3 = 72.90MM, K = 69.85MM	WIDE ANGLE, HEIGHT = 65MM
3502-100	1350 SERIES - N = 100MM	BLANK
3-2-12000-1350	1350 SERIES - N = 120MM	BLANK
3502-1310	1350 SERIES 1310 BOLTING - D2 = 51.00MM, D3 = 60.70MM, K = 60.30MM	
3-2-352-75M	1350 SERIES TCM FACE - D2 = 64.00MM, D3 = 77.00MM, K = 75.00MM	
3-2-A1139	1350 SERIES TOYOTA - D2 = 60.00MM, D3 = 68.00MM, K = 46.00MM	
3502-688	1350 SERIES DOUBLE YOKE APPLICATION	BLANK
SLIP YOKES		
3-3-598KX	1350 SERIES - 1.50X16SPL - L = 148MM	
3-3-488KX	1350 SERIES - 1.50X16SPL - L = 186MM	
SLIP STUBS		
3-40-1471	1350 SERIES - 1.50 X 16SPL - 2.50, L = 141MM	
3-40-1101	1350 SERIES - 1.50 X 16SPL - 3.00, L = 151MM	
3-40-1611	1350 SERIES - 1.50 X 16SPL - 3.00, L = 187MM	
K3-42-A1151	1350 SERIES - 1.50 X 16SPL - 3.00, L = 195MM	
3-40-1601	1350 SERIES - 1.50 X 16SPL - 3.50, L = 163MM	
SLIP SETS		
3-6-01	1350 SERIES SLIP SET TO SUIT 3.00 TUBE	
REVERSE SLIP YOKES		
3-3-3558	1350 SERIES TOYOTA - S = 23 SPL , O = 39.95MM SEAL	
3-3-3158	1350 SERIES C4 - S = 28 SPL , O = 38MM SEAL	
3-3-2491X	1350 SERIES TO SUIT C6	
3-3-3851X	1350 SERIES C6 - S = 31 SPL , O = 42.8MM SEAL	
3-3-4281X	1350 SERIES T350	
3-3-4261X	1350 SERIES T400 SLIP YOKE	
K3-3-A3698	1350 SERIES T400- S = 32SPL , O = 47.9MM SEAL	
3503-323	1350 SERIES NISSAN 300ZX YOKE	
3-3-4281HP	1350 SERIES HIGH PERFORMANCE FORGED - S = 27SPL, O = 38.1MM	COUNTER BORE
3-3-8251HP	1350 SERIES HIGH PERFORMANCE FORGED - S = 28SPL, O = 38.1MM	FORD
3-3-5571HP	1350 SERIES HIGH PERFORMANCE FORGED - S = 32SPL, O = 47.63MM	T400
3-3-5551HP	1350 SERIES HIGH PERFORMANCE FORGED - S = 32SPL, O = 47.63MM	T400 / COUNTER BORE
3-3-2491HP	1350 SERIES HIGH PERFORMANCE FORGED - S = 31SPL, O = 42.67MM	C6

1350 SERIES - 30.16 X 92.08 MM

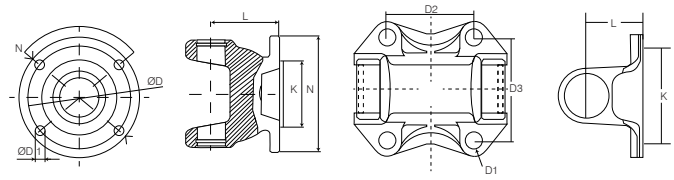
PART NO	ITEM DESCRIPTION	NOTES
TUBE YOKES		
3-28-47S	1350 SERIES - 2.50 SOLID	
3-28-47	1350 SERIES - 2.50 X .083	
3-28-57	1350 SERIES - 3.00 X .083	
3-28-157	1350 SERIES - 3.00 X .095	
3-28-257	1350 SERIES - 3.50 X .065	
3-28-427	1350 SERIES - 3.50 X .083	
3526-747	1350 SERIES DOUBLE JOINT 65.8MM TUBE - PIN YOKE	
CENTRE YOKES		
3570-290	1350 SERIES DOUBLE JOINT CENTRES = 73MM	
YOKE SHAFTS		
3-82-191	1350 SERIES - 1.50 X 16SPL, L = 190MM	
END YOKES		
3-4-3504-08	1350 SERIES 9" FORD 28 SPLINE - FORGED	
3-4-3504-07B	1350 SERIES 1.328 X 30SPL BILLET- GM 8.875" DIFF	
MIDSHIP STUBS		
4-53-71	1350 SERIES 40MM BRG 1.50 X 10SPL 3.00 TUBE	
3-57-2651	1350 SERIES 40MM BRG 1.50 X 10SPL 3.50 TUBE	
DRIVESHAFTS		
35A0021500	1350 SERIES LZ=1500MM	UNWELDED ONE END
CENTRE BEARINGS		
CB-35168-1	1350 SERIES / 35MM BEARING - HEAVY DUTY	
DOUBLE CARDAN PARTS		
1350DJ	1350 SERIES DOUBLE CARDAN ASSY - TIMBERJACK BOLTING	
SPLINED BAR / SPLINED SLEEVES		
4142-38X16	1350 SERIES MALE SPLINE 1.50 X 16SPL - L = 300MM	
3-55-A0128	1350 SERIES SLEEVE 1.50 X 16SPL - L = 180MM	
SMALL PARTS		
103	1350 SERIES U/BOLT CLAMP KIT 42MM CENTRES	
SBK41GM	1350 SERIES U/BOLT CLAMP KIT 42.16MM CENTRES	
SBK41	1350 SERIES U/BOLT CLAMP KIT 46MM CENTRES	
0072-0819	1350 SERIES SPLIT PIN	
16-74-101	1350 SERIES SELF LOCKING NUT	
0074-1611	1350 SERIES CASTLE NUT	
0075-16129	1350 SERIES WASHER	
D3A	1350 SERIES STANDARD TYPE DUST CAP	
D3K	1350 SERIES SPLINED DUST CAP	

1410 SERIES - 30.16 X 106.35 MM

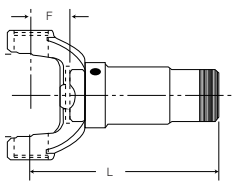
COMPANION FLANGES



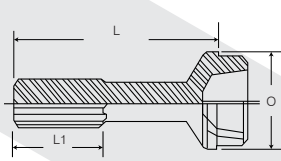
FLANGE YOKES



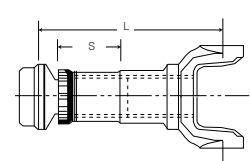
SLIP YOKES



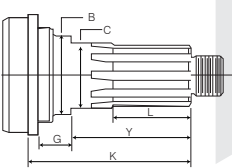
SLIP STUBS



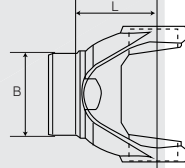
SLIP SETS



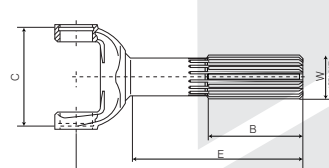
MIDSHIP STUBS



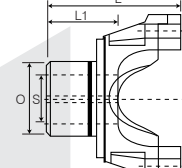
TUBE YOKES



YOKE SHAFTS



END YOKES



PART NO	ITEM DESCRIPTION	NOTES
UNIVERSAL JOINTS		
K5-GB10R	1410 SERIES 30.16 X 106.35	
K5-GB10RHD	1410 SERIES 30.16 X 106.35	HEAVY DUTY
K5-GB10RR	1410 SERIES 30.16 X 106.35	THRUST WASHERS
K5-GB10R-4A	1410 SERIES 30.16 X 106.35	4 POINT LUBE
5-641XSP	1410 SERIES 30.16 X 106.35	HEAVY DUTY
5-345X	1410 SERIES TO 4C HWD 30.16 X 106.35 / 36.52 X 87.32	
COMPANION FLANGES		
3-1-1013	1410 SERIES - NON BORED	
K3-1-A750	1410 SERIES - NON BORED	
3-1-1023	1410 SERIES - PILOT BORE THREADED HOLES	114MM DIAMETER HUB
3-1-163	1410 SERIES - 1.25 BORE 0.31 KEYWAY	
3-1-1013-4	1410 SERIES - 1.25 BORE 0.31 KEYWAY	
3-1-1013-6	1410 SERIES - 1.375 BORE 0.375 KEYWAY	
K3-1-A0191	1410 SERIES - 1.50 X 10 SPL C/BRG	

1410 SERIES - 30.16 X 106.35 MM

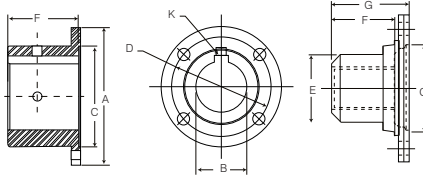
PART NO	ITEM DESCRIPTION	NOTES
COMPANION FLANGES		
84/F3CLC04	1410 SERIES - 1.00 X 15 SPL CLAMPLOCK	
84/F3CLC06	1410 SERIES - 1.25 X 14 SPL CLAMPLOCK	
84/F3CLC33	1410 SERIES - 1.375 X 6 SPL CLAMPLOCK	
84/F3CLC07	1410 SERIES - 1.375 X 21 SPL CLAMPLOCK	
84/F3CLC43	1410 SERIES - 1.50 X 23 SPL CLAMPLOCK	
FLANGE YOKES		
3-2-159	1410 SERIES STD - D2 = 61.20MM, D3 = 72.90MM, K = 69.85MM	
3-2-120	1410 SERIES , N = 120MM	BLANK
3-2-1310	1410 SERIES 1310 BOLTING - N = 96.80MM, D = 79.37MM, D1 = 9.50MM, K = 60.30MM	
3-2-559	1410 SERIES 1510 BOLTING - N = 146.00MM, D = 120.60MM, D1 = 12.70MM, K = 95.20MM	
3-2-352-1410	1410 SERIES MITSU BOLTING - D2 = 64.30MM, D3 = 76.60MM, K = 70.00MM	
SLIP YOKES		
3-3-118KX	1410 SERIES - 1.50 X 16SPL - L = 165MM	
3-3-508KX	1410 SERIES - 1.50 X 16SPL - L = 198MM	
NI-3-1410	1410 SERIES - 1.50 X 16SPL - NISSAN 901003	
3-3-1511KX	1410 SERIES - 1.75 X 16SPL - L = 82.6MM	
SLIP STUBS		
3-40-1471	1410 SERIES - 1.50 X 16SPL - 2.50, L = 141MM	
3-40-1101	1410 SERIES - 1.50 X 16SPL - 3.00, L = 151MM	
3-40-1611	1410 SERIES - 1.50 X 16SPL - 3.00, L = 187MM	
K3-42-A1151	1410 SERIES - 1.50 X 16SPL - 3.00, L = 195MM	
3-40-1601	1410 SERIES - 1.50 X 16SPL - 3.50, L = 163MM	
SLIP SETS		
3-6-4102	1410 SERIES SLIP SET	
4144-002	1410 SERIES SLIP SET WITH 3.50 SLIP STUB / FLANGE	
3-6-002E	1410 SERIES SLIP SET RILSAN 3.00 TUBE, L = 240MM	EURO SPLINE
3-6-003E	1410 SERIES SLIP SET RILSAN 3.50 TUBE, L = 240MM	EURO SPLINE
TUBE YOKES		
4126-657	1410 SERIES - 2.00 X .109 SOLID	
4126-2005	1410 SERIES - 2.50 X .095 SOLID	
3-28-97	1410 SERIES - 3.00 X .083	
3-28-557	1410 SERIES - 3.50 X .083	
4126-1637	1410 SERIES - 3.50 X .095, L = 54MM	
FIXED END		
4148-290	1410 SERIES FIXED END TO SUIT 3.50 X .095	

1410 SERIES - 30.16 X 106.35 MM

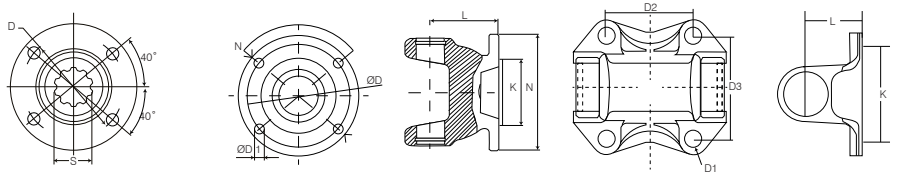
PART NO	ITEM DESCRIPTION	NOTES
YOKE SHAFTS		
3-82-1361	1410 SERIES - 1.50 X 16SPL, L = 123MM	
4182-001	1410 SERIES - 1.50 X 16SPL, L = 170MM	
3-82-261	1410 SERIES - 1.75 X 16SPL, L = 115.5MM	
END YOKES		
3-4-2271-1	1410 SERIES 1.375 X 10SPL	SUIT JET BOAT
MIDSHIP STUBS		
4-53-71	1410 SERIES 40MM BRG 1.50 X 10SPL 3.00 TUBE	
3-57-2651	1410 SERIES 40MM BRG 1.50 X 10SPL 3.50 TUBE	
CENTRE BEARINGS		
CB-35168-1	1410 SERIES / 35MM BEARING - HEAVY DUTY	
MIDSHIP C/BEARING ASSEMBLIES		
4157-001	1410 SERIES MIDSHIP ASSEMBLY SUIT 3.50 TUBE	
DRIVESHAFTS & SHORT COUPLE SETS		
41SF01	1410 SERIES LZ = 240MM	
41SF02	1410 SERIES LZ = 265MM	
41A0011500	1410 SERIES LZ = 1830MM	UNWELDED ONE END
SPLINED BAR / SPLINED SLEEVES		
4142-38X16	1410 SERIES MALE SPLINE 1.50 X 16SPL - L = 300MM	
3-55-A0128	1410 SERIES SLEEVE 1.50 X 16SPL - L = 180MM	
SMALL PARTS		
103	1410 SERIES U/BOLT CLAMP KIT 42MM CENTRES	
SBK41GM	1410 SERIES U/BOLT CLAMP KIT 42.16MM CENTRES	
SBK41	1410 SERIES U/BOLT CLAMP KIT 46MM CENTRES	
0072-0819	1410 SERIES SPLIT PIN	
16-74-101	1410 SERIES SELF LOCKING NUT	
0074-1611	1410 SERIES CASTLE NUT	
0075-16129	1410 SERIES WASHER	
D3A	1410 SERIES STANDARD TYPE DUST CAP	
D3K	1410 SERIES SPLINED DUST CAP	

1480 SERIES - 34.93 X 106.38 MM

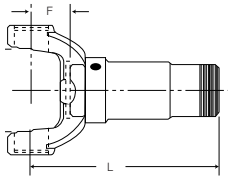
COMPANION FLANGES



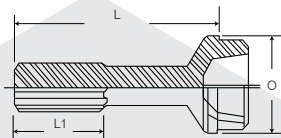
FLANGE YOKES



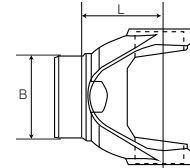
SLIP YOKES



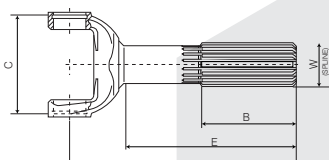
SLIP STUBS



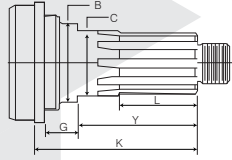
TUBE YOKES



YOKE SHAFTS



MIDSHIP STUBS



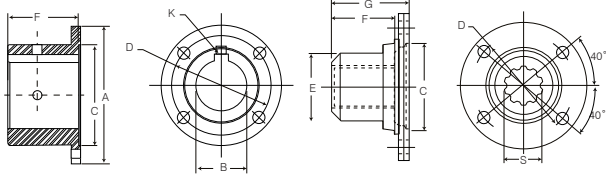
PART NO	ITEM DESCRIPTION	NOTES
UNIVERSAL JOINTS		
5-188X	1480 SERIES 34.93 X 106.38	
5-188XR	1480 SERIES 34.93 X 106.38	THRUST WASHERS
K5-A538	1480 SERIES 34.93 X 106.38 PTO	AGRICULTURAL
5-347X	1480 SERIES TO 5CHWD 34.93 X 106.38 / 42.85 X 88.9	MECHANICS
5-348X	1480 SERIES TO 5CLWT 34.93 X 106.38 / 42.85 X 88.9	MECHANICS
902023	1480 SERIES TO ISUZU 34.93 X 106.38 / 35 X 104	
COMPANION FLANGES		
4-1-1143	1480 SERIES - PILOT BORE THREADED HOLES	146MM DIAMETER HUB
K4-1-A2191	1480 SERIES - 1.50 X 10 SPL C/BRG	
K4-1-A0761	1480 SERIES - 1.75 X 10 SPL C/BRG	
FLANGE YOKES		
3-2-479	1480 SERIES STD - D2 = 77.60MM, D3 = 92.40MM, K = 95.20MM	
3-2-104	1480 SERIES 1410 BOLTING - N = 116.00MM, D = 95.30MM, D1 = 11.10MM, K = 69.85MM	
4802-120	1480 SERIES - N = 120MM	BLANK
3-2-352	1480 SERIES MITSUBISHI - D2 = 64.30MM, D3 = 76.60MM, K = 70.00MM	
3-2-14	1480 SERIES ISUZU - D2 = 58.80MM, D3 = 80.90MM, K = 80.00MM	
3-2-13	1480 SERIES ISUZU - D2 = 55.00MM, D3 = 95.20MM, K = 80.00MM	

1480 SERIES - 34.93 X 106.38 MM

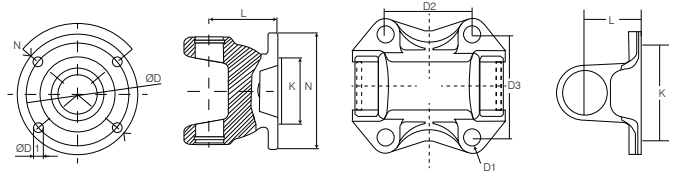
PART NO	ITEM DESCRIPTION	NOTES
SLIP YOKES		
3-3-1601KX	1480 SERIES - 1.56 X 16SPL - L = 173MM	
3-3-1641KX	1480 SERIES - 1.56 X 16SPL - L = 241MM	
3-3-1505KX	1480 SERIES - 1.75 X 16SPL - L = 175MM	
SLIP STUBS		
3-40-1571	1480 SERIES 1.562 X 16SPL - 3.50, L = 172MM	
3-40-1391	1480 SERIES 1.562 X 16SPL - 3.50, L = 225MM	
K4-42-GB1791	1480 SERIES 1.75 X 16SPL - 3.00, L = 167MM	
4-40-761	1480 SERIES 1.75 X 16SPL - 3.50, L = 165MM	
TUBE YOKES		
4826-001	1480 SERIES - 3.00 X.095	
3-28-537	1480 SERIES - 3.50 X.083	
YOKE SHAFTS		
3-82-1504	1480 SERIES 1.56 X 16SPL L = 145MM	
MIDSHIP STUBS		
4-53-71	1480 SERIES 40MM BRG 1.50 X 10SPL 3.00 TUBE	
3-57-2651	1480 SERIES 40MM BRG 1.50 X 10SPL 3.50 TUBE	
CENTRE BEARINGS		
210391-1X	1480 SERIES 40MM BRG - BHC = 168.3MM	SLOTTED
SMALL PARTS		
3-94-28X	1480 SERIES U/BOLT CLAMP KIT 49MM CENTRES	
SBK55	1480 SERIES U/BOLT CLAMP KIT 54MM CENTRES	
0072-0819	1480 SERIES SPLIT PIN	
16-74-101	1480 SERIES SELF LOCKING NUT	
0074-1611	1480 SERIES CASTLE NUT	
0075-16129	1480 SERIES WASHER	

1510 SERIES - 39.70 X 115.90 MM

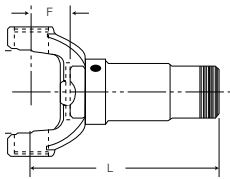
COMPANION FLANGES



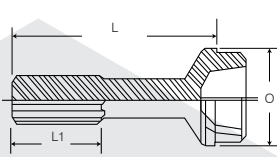
FLANGE YOKES



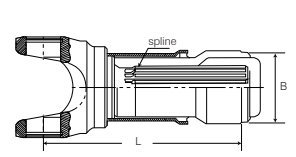
SLIP YOKES



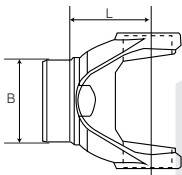
SLIP STUBS



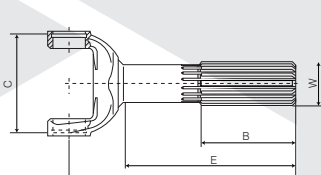
SLIP SETS



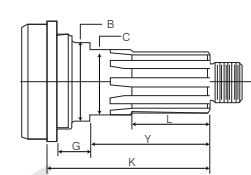
TUBE YOKES



YOKE SHAFTS



MIDSHIP STUBS



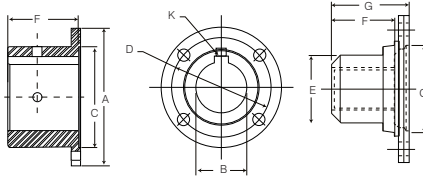
PART NO	ITEM DESCRIPTION	NOTES
UNIVERSAL JOINTS		
K5-GB22R	1510 SERIES 39.7 X 115.9 - CIRCLIP	
COMPANION FLANGES		
K4-1-A2191	1510 SERIES - 1.50 X 10SPL C/BRG	
K4-1-A0761	1510 SERIES - 1.75 X 10SPL C/BRG	
4-1-1143	1510 SERIES - PILOT BORE THREADED HOLES	
FLANGE YOKES		
K4-2-GB239	1510 SERIES STD - D2 = 77.60MM, D3 = 92.40MM, K = 95.20MM	
K4-2-GB239B	1510 SERIES, N = 146.00MM	
K4-2-GB042	1510 SERIES S/C STD BOLTING - D2 = 77.60MM, D3 = 92.40MM, K = 95.20MM, HEIGHT= 42.00MM	
5102-150B	1510 SERIES 150DIN, N = 150.00MM	
5102-HI8478	1510 SERIES HINO - D2 = 78.00MM, D3 = 84.00MM, K = 70.00MM	
5102-HI9580	1510 SERIES HINO - D2 = 80.00MM, D3 = 95.00MM, K = 80.00MM	
5102-IS9770	1510 SERIES ISUZU - D2 = 70.00MM, D3 = 97.00MM, K = 90.00MM	
5102-MI8686	1510 SERIES MITSU - D2 = 86.00MM, D3 = 86.00MM, K = 68.00MM	
SLIP YOKES		
K4-3-A1120	1510 SERIES - 1.75X16SPL , L = 169MM	
SLIP STUBS		
K4-42-GB1791	1510 SERIES 1.75 X 16SPL - 3.00, L = 167MM	
4-40-761	1510 SERIES 1.75 X 16SPL - 3.50, L = 165MM	

1510 SERIES - 39.70 X 115.90 MM

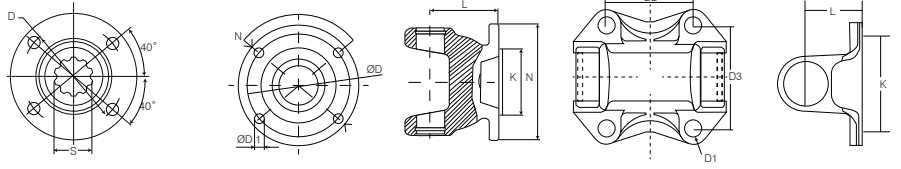
PART NO	ITEM DESCRIPTION	NOTES
SLIP SETS		
K4-6-001	1510 SERIES SLIP SET 3.50 TUBE, L=255MM	EURO SPLINE
K4-6-002	1510 SERIES SLIP SET 3.00 TUBE, L=215MM	
TUBE YOKES		
K4-26-GB477	1510 SERIES - 3.00 X .095	
K4-26-GB547	1510 SERIES - 3.50 X .095	
YOKE SHAFTS		
5182-001	1510 SERIES - 1.75 X 16SPL, L=175MM	
MIDSHIP STUBS		
4-53-71	1510 SERIES 40MM BRG 1.50 X 10SPL 3.00 TUBE	
3-57-2651	1510 SERIES 40MM BRG 1.50 X 10SPL 3.50 TUBE	
5-53-111	1510 SERIES 45MM BRG 1.75 X 10SPL 3.50 TUBE	
CENTRE BEARINGS		
210391-1X	1510 SERIES 40MM BRG - BHC = 168.3MM	SLOTTED
210084-2X	1510 SERIES 45MM BRG - BHC = 193.7MM	SLOTTED
MIDSHIP C/BEARING ASSEMBLIES		
K4-8-045	1510 SERIES MIDSHIP ASSY 45MM BEARING 90 X 3 TUBE	
DRIVESHAFTS & SHORT COUPLE SETS		
51A0031500	1510 SERIES, LZ=1900MM	UNWELDED ONE END
K4-03-LZ170	1510 SERIES SHORT COUPLED, LZ = 170MM	
K4-03-LZ270	1510 SERIES SHORT COUPLED, LZ = 270MM	
SPLINED BAR / SPLINED SLEEVES		
5142-011	1510 SERIES MALE SPLINE 1.75 X 16SPL - L = 180MM	
5142-44X16	1510 SERIES MALE SPLINE 1.75 X 16SPL - L = 300MM	
5123-125	1510 SERIES SLEEVE 1.75 X 16SPL - L = 160MM	
4-55-A0138	1510 SERIES SLEEVE 1.75 X 16SPL - L = 230MM	
SMALL PARTS		
0072-0819	1510 SERIES SPLIT PIN	
16-74-101	1510 SERIES SELF LOCKING NUT	
0074-1611	1510 SERIES CASTLE NUT	
0075-16129	1510 SERIES WASHER	
4-1516-31	1510 SERIES SPLINED CORK/WASHER	
231502	1510 SERIES MIDSHIP NUT	

1550 SERIES - 34.93 X 126.20 MM

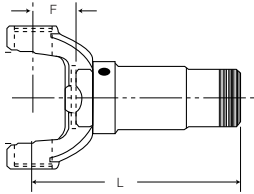
COMPANION FLANGES



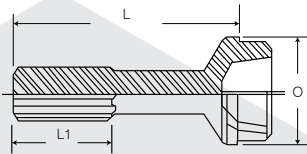
FLANGE YOKES



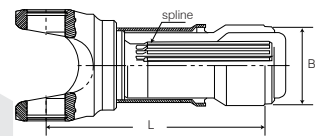
SLIP YOKES



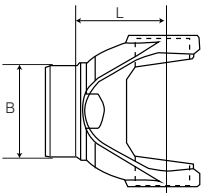
SLIP STUBS



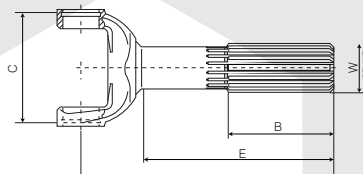
SLIP SETS



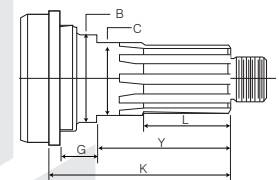
TUBE YOKES



YOKE SHAFTS



MIDSHIP STUBS



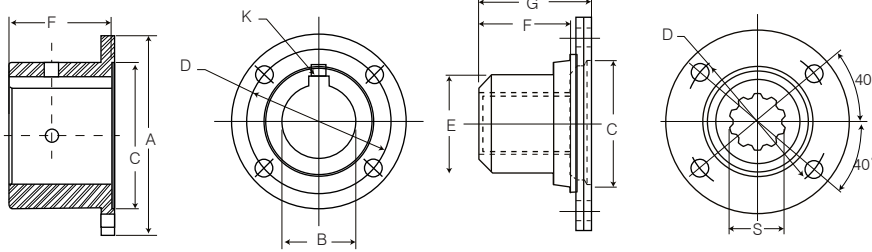
PART NO	ITEM DESCRIPTION	NOTES
UNIVERSAL JOINTS		
5-155X	1550 SERIES 34.93 X 126.20	
5-155XSP	1550 SERIES 34.93 X 126.20	HEAVY DUTY
5-155XR	1550 SERIES 34.93 X 126.20	THRUST WASHERS
5-221X	1550 SERIES TO 6CHWD 34.93 X 126.20 / 42.85 X 114.3	
COMPANION FLANGES		
4-1-1143	1550 SERIES - PILOT BORE THREADED HOLES	146MM DIAMETER HUB
K4-1-A2191	1550 SERIES - 1.50 X 10 SPL C/BRG	
K4-1-A0761	1550 SERIES - 1.75 X 10 SPL C/BRG	
FLANGE YOKES		
4-2-669	1550 SERIES STD - D2 = 77.50MM, D3 = 92.40MM, K = 95.30MM	
4-2-679	1550 SERIES LOW ANGLE - D2 = 77.50MM, D3 = 92.40MM, K = 95.30MM	
4-2-1069	1550 SERIES 150DIN - N = 150.00MM, D = 130.00MM, D1 = 12.00MM (X 8)	
4-2-25	1550 SERIES 150KV - N = 150.00MM, D = 130.00MM, D1 = 13.00MM (X 4)	
SLIP YOKES		
4-3-1241KX	1550 SERIES - 1.75 X 16SPL , L = 175MM	
4-3-1431KX	1550 SERIES - 1.75 X 16SPL , L = 255MM	
4-3-2331KX	1550 SERIES - 1.79 X 28SPL , L = 255MM	
4-3-1261KX	1550 SERIES - 2.50 X 16SPL , L = 89MM	USE WITH 4-82-191 Y/SHAFT

1550 SERIES - 34.93 X 126.20 MM

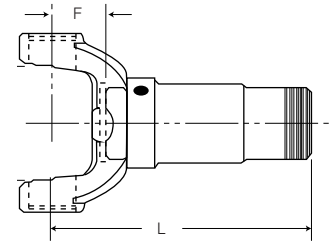
PART NO	ITEM DESCRIPTION	NOTES
SLIP STUBS		
4-40-761	1550 SERIES 1.75 X 16SPL - 3.50, L = 165MM	
4-40-721	1550 SERIES 1.75 X 16SPL - 3.50, L = 234MM	
4-40-961	1550 SERIES 1.79 X 28SPL - 3.50, L = 257MM	
SLIP SETS		
4-6-01	1550 SERIES SLIP SET 3.50 TUBE, L = 210MM	
TUBE YOKES		
4-28-307	1550 SERIES - 3.50 X .095, SHORT	
4-28-417	1550 SERIES - 3.50 X .095	
YOKE SHAFTS		
4-82-191	1550 SERIES - 2.50 X 16SPL S/C, L = 115MM	USE WITH 4-3-1261KX, 140MM UJ C - C
MIDSHIP STUBS		
4-53-71	1550 SERIES 40MM BRG 1.50 X 10SPL 3.00 TUBE	
3-57-2651	1550 SERIES 40MM BRG 1.50 X 10SPL 3.50 TUBE	
5-53-111	1550 SERIES 45MM BRG 1.75 X 10SPL 3.50 TUBE	
CENTRE BEARINGS		
210391-1X	1550 SERIES 40MM BRG - BHC = 168.3MM	SLOTTED
210084-2X	1550 SERIES 45MM BRG - BHC = 193.7MM	SLOTTED
DRIVESHAFTS & SHORT COUPLE SETS		
55A0021500	1550 SERIES DRIVESHAFT	UNWELDED ONE END
4-03-320LZ	1550 SERIES SHORT COUPLED DRIVESHAFT	
SMALL PARTS		
3-94-28X	1550 SERIES U/BOLT CLAMP KIT 49MM CENTRES	
SBK55	1550 SERIES U/BOLT CLAMP KIT 54MM CENTRES	
0072-0819	1550 SERIES SPLIT PIN	
16-74-101	1550 SERIES SELF LOCKING NUT	
0074-1611	1550 SERIES CASTLE NUT	
0075-16129	1550 SERIES WASHER	
231502	1510 SERIES MIDSHIP NUT	

1610 SERIES - 47.63 X 134.94 MM

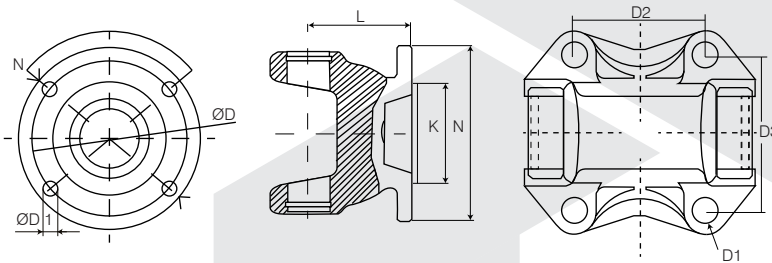
COMPANION FLANGES



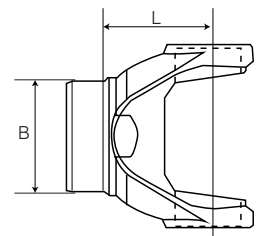
SLIP YOKES



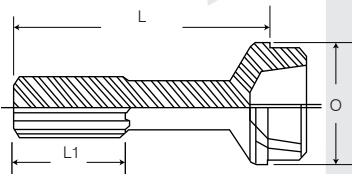
FLANGE YOKES



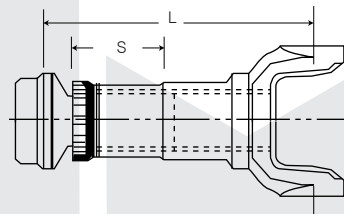
TUBE YOKES



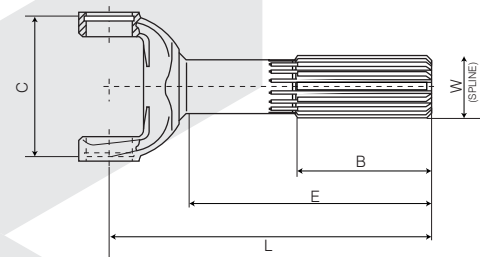
SLIP STUBS



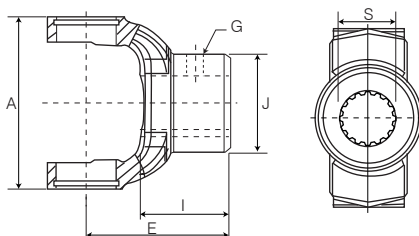
SLIP SETS



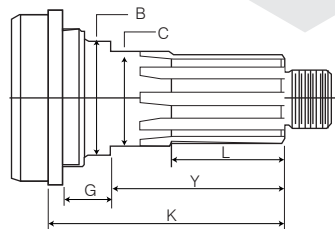
YOKE SHAFTS



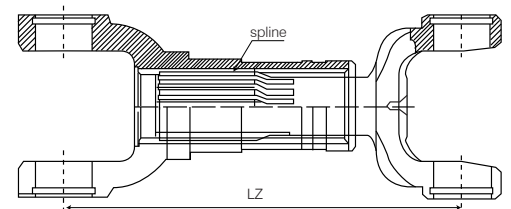
END YOKES



MIDSHIP STUBS



SHORT COUPLE SETS



1610 SERIES - 47.63 X 134.94 MM

PART NO	ITEM DESCRIPTION	NOTES
UNIVERSAL JOINTS		
5-279X	1610 SERIES 47.63 X 134.94	STD
5-279XP	1610 SERIES 47.63 X 134.94	PREMIUM
5-674X	1610 SERIES 47.63 X 134.94 QUICK RELEASE	STD
5-674XP	1610 SERIES 47.63 X 134.94 QUICK RELEASE	PREMIUM
COMPANION FLANGES		
K5-1-A0741	1610 SERIES - 1.75 X 10 SPL C/BRG	
5-1-A2299	1610 SERIES - 1.75 X 10 SPL O/D 200MM	BLANK
FLANGE YOKES		
5-2-279	1610 SERIES STD - N = 175.00MM, D = 155.60MM, D1 = 9.50MM (X 8), K = 168.30MM	
5-2-379	1610 SERIES LOW ANGLE - N = 175.00MM, D = 155.60MM, D1 = 9.50MM (X 8), K = 168.30MM	
5-2-629	1610 SERIES 1710 FACE - N = 203.20MM, D = 184.20MM, D1 = 9.50MM (X 8), K = 196.90MM	
5-2-244	1610 SERIES ISUZU - D2 = 74.50MM, D3 = 118.00MM, K = 90.00MM	
5-2-576	1610 SERIES MITSUBISHI - D2 = 75.00MM, D3 = 110.00MM, K = 90.00MM	
5-2-180414-1	1610 SERIES MITSUBISHI - D2 = 83.00MM, D3 = 122.00MM, K = 90.00MM	
SLIP YOKES		
5-3-108KX	1610 SERIES - 2.00 X 16SPL , L = 198MM	
5-3-2261KX	1610 SERIES - 2.00 X 16SPL , L = 275MM	
5-3-168KX	1610 SERIES - 2.68 X 18SPL , L = 89MM	
SLIP STUBS		
5-40-1191	1610 SERIES 2.00 X 16SPL - O = 3.50, L = 191MM	
5-40-1011	1610 SERIES 2.00 X 16SPL - O = 3.50, L = 246MM	
SLIP SETS		
5-6-01	1610 SERIES SLIP SET - L = 307.00MM	
TUBE YOKE		
5-28-327	1610 SERIES - 4.00 X .134	
5-28-627	1610 SERIES - 3.50 X .134	
YOKE SHAFTS		
5-82-781	1610 SERIES 2.00 X 16SPL - L = 275MM	
5-82-161	1610 SERIES 2.67 X 18SPL - L = 105MM	
END YOKES		
5-4-1721	1610 SERIES 1.750 X 10SPL SUIT C/BEARING	
MIDSHIP STUBS		
5-53-111	1610 SERIES 45MM BRG 1.75 X 10SPL 3.50 TUBE	
CENTRE BEARINGS		
210084-2X	1610 SERIES 45MM BRG - BHC = 193.7MM	SLOTTED

1610 SERIES - 47.63 X 134.94 MM

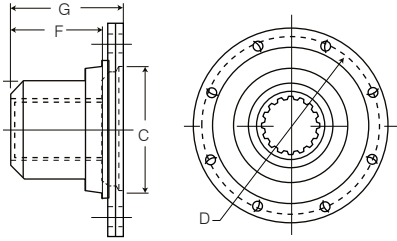
PART NO	ITEM DESCRIPTION	NOTES
MIDSHIP C/BEARING ASSEMBLIES		
5-8-1721	1610 SERIES MIDSHIP ASSEMBLY - 45MM BEARING	LESS CENTRE BEARING
DRIVESHAFTS & SHORT COUPLE SETS		
60A0021500	1610 SERIES - LZ = 2060MM	UNWELDED ONE END
61K150	1610 SERIES SHORT COUPLED, LZ = 150MM CLOSED	
5-03-01	1610 SERIES SHORT COUPLED, LZ = 235MM CLOSED	
SPLINED BAR / SPLINED SLEEVES		
6042 -51X16	1610 SERIES MALE SPLINE 2.00 X 16SPL - L = 300MM	
5-55-A0148	1610 SERIES SLEEVE 2.00 X 16SPL - L = 220MM	
6123 -210	1610 SERIES SLEEVE 2.00 X 16SPL - L = 242MM	
SMALL PARTS		
5-70-28X	1610 SERIES U/BOLT CLAMP KIT 63MM CENTRES	
231502	1610 SERIES MIDSHIP NUT	
231502W	1610 SERIES HEAVY DUTY WASHER	
5-86-68	1610 SERIES DUST CAP	
C3SB	1610 SERIES SPLINED CRIMP DUST CAP	

1650 SERIES - 41.28 X 142.00 MM

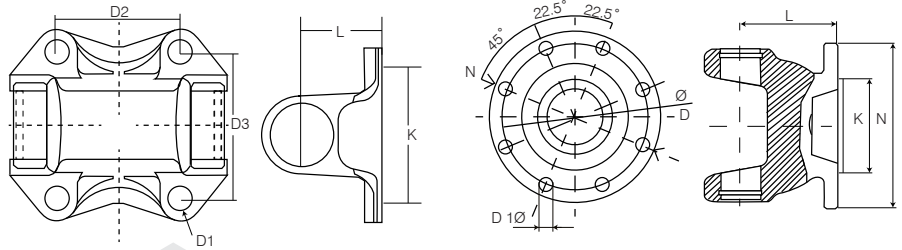
PART NO	ITEM DESCRIPTION	NOTES
UNIVERSAL JOINTS		
5-165X	1650 SERIES 41.28 X 142.00	
5-330X	1650 SERIES TO 7CHWD 41.28 X 142.00 / 49.21 X 117.60	
SLIP YOKES		
5-3-1571KX	1650 SERIES - 2.00 X 16SPL - L = 255MM	
SLIP STUBS		
5-40-1191	1650 SERIES 2.00 X 16SPL - O = 3.50, L = 191MM	
TUBE YOKES		
5-28-367	1650 SERIES - 3.50 X .134	

1710 SERIES - 49.21 X 154.78 MM

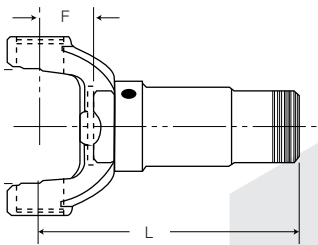
COMPANION FLANGES



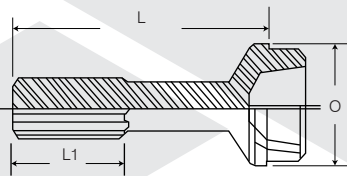
FLANGE YOKES



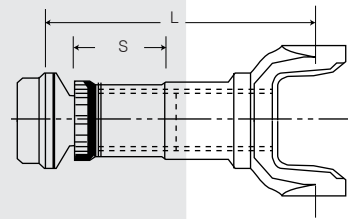
SLIP YOKES



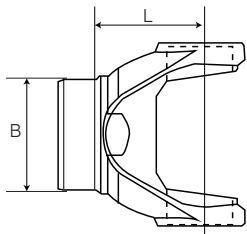
SLIP STUBS



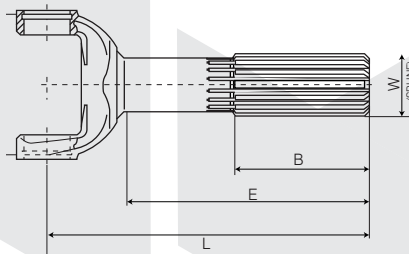
SLIP SETS



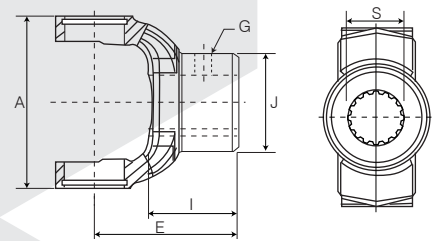
TUBE YOKES



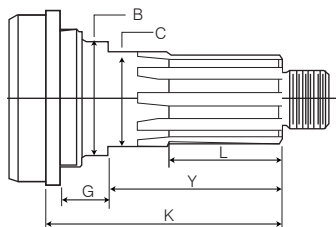
YOKE SHAFTS



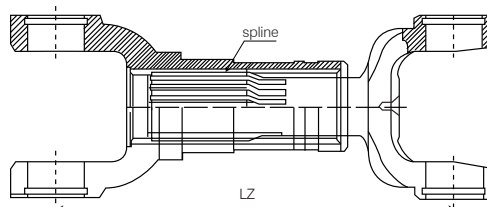
END YOKES



MIDSHIP STUBS



DRIVESHAFT & SHORT COUPLE SETS



1710 SERIES - 49.21 X 154.78 MM

PART NO	ITEM DESCRIPTION	NOTES
UNIVERSAL JOINTS		
5-280X	1710 SERIES 49.21 X 155.08	STD
5-280XP	1710 SERIES 49.21 X 155.08	PREMIUM, THR/W
5-280XR	1710 SERIES 49.21 X 155.08	THRUST WASHER
5-675X	1710 SERIES 49.21 X 154.78 QUICK RELEASE	STD
5-675XP	1710 SERIES 49.21 X 154.78 QUICK RELEASE	PREMIUM, THR/W
5-675XR	1710 SERIES 49.21 X 154.78 QUICK RELEASE	THRUST WASHER
COMPANION FLANGES		
6-1-2221	1710 SERIES - 2.00 X 10 SPL DARLEY PUMP	
6-1-A2221	1710 SERIES - 2.375 X 16 SPL O/D 240MM S/F C/BRG	
FLANGE YOKES		
6-2-749	1710 SERIES STD - N = 203.00MM, D = 184.20MM, D1 = 9.50MM, K = 196.90MM	
6-2-769	1710 SERIES LOW ANGLE - N = 203.00MM, D = 184.20MM, D1 = 9.50MM, K = 196.90MM	
6-2-739	1710 SERIES 90 DEG U/J BOLTS - N = 203.00MM, D = 184.20MM, D1 = 9.50MM, K = 196.90MM	
6-2-1299	1710 SERIES 1610 FACE - N = 175.00MM, D = 155.60MM, D1 = 9.50MM, K = 168.30MM	
6-2-180	1710 SERIES 180MM O/D - N = 180.00MM, K = 110.00MM	BLANK
6-2-197146-1	1710 SERIES ISUZU - D2 = 91.80MM, D3 = 131.10MM, K = 100.00MM	
6-2-578	1710 SERIES MITSU - D2 = 83.00MM, D3 = 122.00MM, K = 90.00MM	
6-2-192416	1710 SERIES MITSU - D2 = 80.00MM, D3 = 134.00MM, K = 90.00MM	
6-2-120612	1710 SERIES MITSU 6 BOLT - N = 203.00MM, D = 180.00MM, D1 = 13.10MM, K = 120.00MM	
6-2-15	1710 SERIES 150KV - N = 150.00MM, D = 130.00MM, D1 = 13.20MM (X 4)	
SLIP YOKES		
6-3-2671KX	1710 SERIES - 2.50 X 16SPL, L = 244MM	
6-3-2651KX	1710 SERIES - 2.50 X 16SPL, L = 297MM	
6-3-2551KX	1710 SERIES - 2.50 X 16SPL, L = 323MM	
SLIP STUBS		
6-40-741	1710 SERIES 2.50 X 16SPL - 3.50, L = 235MM	
6-40-541	1710 SERIES 2.50 X 16SPL - 4.00, L = 235MM	
6-40-521	1710 SERIES 2.50 X 16SPL - 4.00, L = 268MM	
6-40-631	1710 SERIES 2.50 X 16SPL - 4.50, L = 241MM	
SLIP SETS		
6-6-01	1710 SERIES SLIP SET - L = 335MM	

1710 SERIES - 49.21 X 154.78 MM

PART NO	ITEM DESCRIPTION	NOTES
TUBE YOKES		
6-28-137	1710 SERIES - 3.50 X .134	
6-28-347	1710 SERIES - 4.00 X .134	
6-28-467	1710 SERIES - 4.00 X .134 WIDE ANGLE	
6-28-407	1710 SERIES - 4.50 X .134	
YOKE SHAFTS		
6-82-451	1710 SERIES - 2.50 X 10SPL, L = 287MM	
6-82-1281	1710 SERIES - 2.50 X 16SPL, L = 307MM	
6-82-1061-1	1710 SERIES - 2.50 X 16SPL, L = 356MM	
6-82-1061-3	1710 SERIES - 2.50 X 16SPL, L = 381MM	
6-82-1061-11	1710 SERIES - 2.50 X 16SPL, L = 407MM	
END YOKES		
6-4-1981	1710 SERIES 1.969 X 10SPL SUIT C/BEARING 50MM	
6-4-4601	1710 SERIES 2.35 X 16SPL SUIT C/BEARING 60MM	
6-4-3221	1710 SERIES 1.969 X 10SPL, O = 2.75, L = 5.25	
6-4-5521	1710 SERIES 2.024 X 39SPL, O = 2.75, L = 5.25	
6-4-6951X	1710 SERIES 2.024 X 39SPL, O = 2.75, L = 5.25	WITH SLINGER
6-4-5501	1710 SERIES 2.024 X 39SPL, O = 2.75, L = 6.50	
6-4-6401	1710 SERIES 2.024 X 39SPL, O = 3.00, L = 5.126	
6-4-6371	1710 SERIES 2.024 X 39SPL, O = 3.00, L = 6.25	
6-4-7551	1710 SERIES 2.143 X 41SPL, O = 2.938, L=6.125	
6-4-7541	1710 SERIES 2.143 X 41SPL, O = 2.938, L = 6.625	
6-4-5451	1710 SERIES 2.375 X 46SPL, O = 3.25, L=5.688	
6-4-7761	1710 SERIES 2.375 X 46SPL, O = 3.25, L = 6.50	
6-4-6921X	1710 SERIES 2.50 X 10SPL, O = 3.75, L = 5.625	WITH SLINGER
6-4-6611	1710 SERIES 2.50 X 10SPL, O = 3.75, L = 5.625	
6-4-6821	1710 SERIES 2.75 X 10 SPL, O = 3.75, L = 5.75	
MIDSHIP STUBS		
6-53-201	1710 SERIES 50MM BRG 1.958 X 10SPL 4.00 TUBE	
6-53-311	1710 SERIES 60MM BRG 2.360 X 16SPL 4.00 TUBE	

1710 SERIES - 49.21 X 154.78 MM

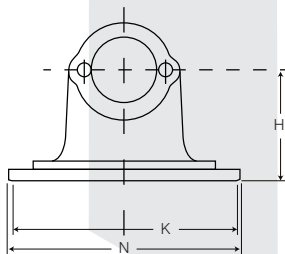
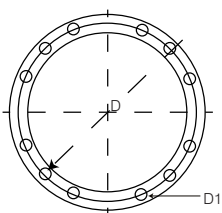
PART NO	ITEM DESCRIPTION	NOTES
CENTRE BEARINGS		
210121 -1X	1710 SERIES 50MM BRG - BHC = 193.7MM	SLOTTED
210881-1X	1710 SERIES 50MM BRG - BHC = 193.7MM	SOLID
210661-1X	1710 SERIES 60MM BRG - BHC = 219.1MM	SLOTTED
210661 -1XSA	1710 SERIES 60MM BRG - BHC = 219.1MM, SELF ALIGNING	SLOTTED
210875 -1X	1710 SERIES 60MM BRG - BHC = 219.1MM	SOLID
210875 -1XSA	1710 SERIES 60MM BRG - BHC = 219.1MM, SELF ALIGNING	SOLID
MIDSHIP C/BEARING ASSEMBLIES		
1700-57-55	1710 SERIES ASSEMBLY - 55MM BEARING	
DRIVESHAFTS & SHORT COUPLE SETS		
6-03-LZ355	1710 SERIES, LZ = 355MM C - C CLOSED	
6-03-LZ355QR	1710 SERIES, LZ = 355MM C - C CLOSED	QUICK RELEASE
6-03-LZ415	1710 SERIES, LZ = 415MM C - C CLOSED	
6-03-LZ415QR	1710 SERIES, LZ = 415MM C - C CLOSED	QUICK RELEASE
6-03-LZ440	1710 SERIES, LZ = 440MM C - C CLOSED	
6-03-LZ440QR	1710 SERIES, LZ = 440MM C - C CLOSED	QUICK RELEASE
6-03-LZ460	1710 SERIES, LZ = 460MM C - C CLOSED	
6-03-LZ460QR	1710 SERIES, LZ = 460MM C - C CLOSED	QUICK RELEASE
6-03-LZ490	1710 SERIES, LZ = 490MM C - C CLOSED	
6-03-LZ490QR	1710 SERIES, LZ = 490MM C - C CLOSED	QUICK RELEASE
6-03-LZ505	1710 SERIES, LZ = 505MM C - C CLOSED	
6-03-LZ505QR	1710 SERIES, LZ = 505MM C - C CLOSED	QUICK RELEASE
6-03-LZ580	1710 SERIES, LZ = 580MM C - C CLOSED	
6-03-LZ580QR	1710 SERIES, LZ = 580MM C - C CLOSED	QUICK RELEASE
6-03-LZ695V	1710 SERIES, LZ = 695MM FL - FL CLOSED	VOLVO I/A
71K167	1710 SHORT COUPLED, LZ = 170MM CLOSED	NOT INCL. UJ'S
SPLINED BAR / SPLINE D SLEEVES		
6-55-A0158	1710 SERIES MALE SPLINE 2.50 X 16SPL - L = 260MM	
7123-240	1710 SERIES MALE SPLINE 2.50 X 16SPL - L = 280MM	
7042-64X16	1710 SERIES SLEEVE 2.50 X 16SPL - L = 300MM	

1710 SERIES - 49.21 X 154.78 MM

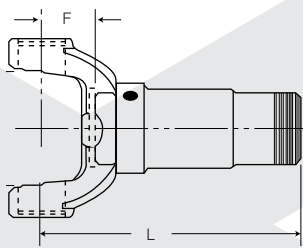
PART NO	ITEM DESCRIPTION	NOTES
SMALL PARTS		
6-5-70-18X	1710 SERIES U/BOLT CLAMP KIT 71MM CENTRES	
212214X	1710 SERIES U/BOLT CLAMP KIT 71MM CENTRES	HEAVY DUTY
6-73-109	1710 SERIES U/J BOLTS	
6-73-209	1710 SERIES U/J BOLTS	SELF LOCK
6-68-71	1710 SERIES WELCH PLUG	STEEL
6-68-74	1710 SERIES WELCH PLUG	PLASTIC
231502	1710 SERIES MIDSHIP NUT	
231502W	1710 SERIES HEAVY DUTY WASHER	
230323	1710 SERIES LOCKTABS	
6-3-86-18	1710 SERIES DUST CAP	
C6SB	1710 SERIES SPLINED CRIMP DUST CAP	

1760 SERIES - 49.21 X 177.80 MM

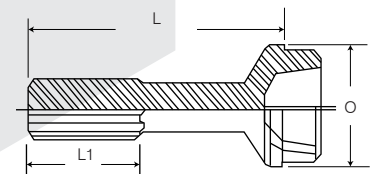
FLANGE YOKES



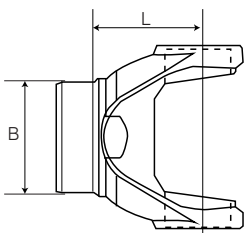
SLIP YOKES



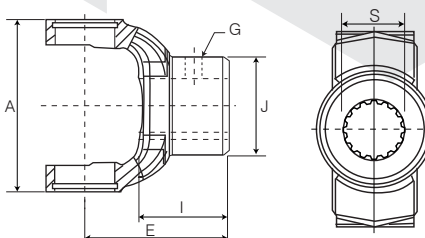
SLIP STUBS



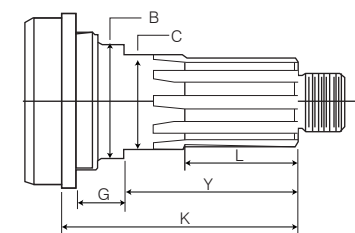
TUBE YOKES



END YOKES



MIDSHIP STUBS



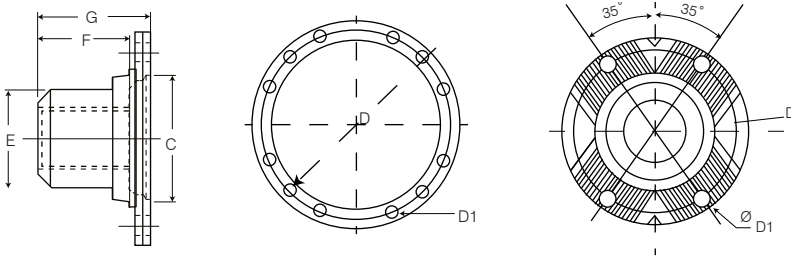
PART NO	ITEM DESCRIPTION	NOTES
UNIVERSAL JOINTS		
5-407X	1760 SERIES 49.21 X 177.80	STD
5-407XP	1760 SERIES 49.21 X 177.80	PREMIUM
5-677X	1760 SERIES 49.21 X 177.80 QUICK RELEASE	STD
5-677XP	1760 SERIES 49.21 X 177.80 QUICK RELEASE	PREMIUM

1760 SERIES - 49.21 X 177.80 MM

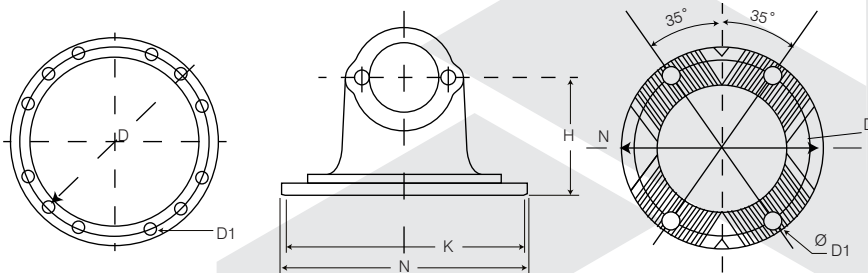
PART NO	ITEM DESCRIPTION	NOTES
FLANGE YOKES		
6-3-2-19	1760 SERIES STD - N = 203.00MM, D = 184.20MM, D1 = 11.13MM (X 12), K = 196.90MM	
SLIP YOKES		
6-3-3-21KX	1760 SERIES - 2.50 X 16SPL , L = 283MM	
6-3-3-41KX	1760 SERIES - 2.50 X 16SPL , L = 235MM	
SLIP STUBS		
6-40-521	1760 SERIES 2.50 X 16SPL - 4.00, L = 268MM	
6-40-541	1760 SERIES 2.50 X 16SPL - 4.00, L = 235MM	
TUBE YOKES		
6-3-28-17	1760 SERIES - 4.00 X .134	
END YOKES		
6-3-4-161	1760 SERIES - 2.344 X 16SPL SUIT C/BEARING 60MM	
6-3-4-161-1	1760 SERIES - 2.344 X 16SPL SUIT C/BEARING 60MM	QUICK RELEASE
MIDSHIP STUBS		
6-53-311	1760 SERIES 60MM BRG 2.360 X 16SPL 4.00 TUBE	
CENTRE BEARINGS		
210661-1X	1760 SERIES 60MM BRG - BHC = 219.1MM	SLOTTED
210661 -1XSA	1760 SERIES 60MM BRG - BHC = 219.1MM, SELF ALIGNING	SLOTTED
210875 -1X	1760 SERIES 60MM BRG - BHC = 219.1MM	SOLID
210875 -1XSA	1760 SERIES 60MM BRG - BHC = 219.1MM, SELF ALIGNING	SOLID
SMALL PARTS		
6-5-70-18X	1760 SERIES U/BOLT CLAMP KIT 71MM CENTRES	
212214X	1760 SERIES U/BOLT CLAMP KIT 71MM CENTRES	HEAVY DUTY
6-73-109	1760 SERIES U/J BOLTS	
6-73-209	1760 SERIES U/J BOLTS	SELF LOCK
6-68-71	1760 SERIES WELCH PLUG	STEEL
6-68-74	1760 SERIES WELCH PLUG	PLASTIC
231502	1760 SERIES MIDSHIP NUT	
231502W	1760 SERIES HEAVY DUTY WASHER	
230323	1760 SERIES LOCKTABS	
6-3-86-18	1760 SERIES DUST CAP	
C6SB	1760 SERIES SPLINED CRIMP DUST CAP	

1810 SERIES - 49.21 X 191.69 MM

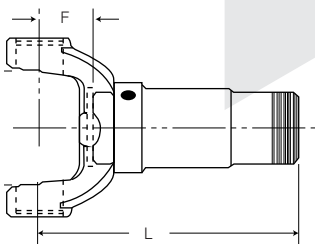
COMPANION FLANGES



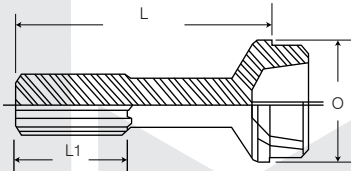
FLANGE YOKES



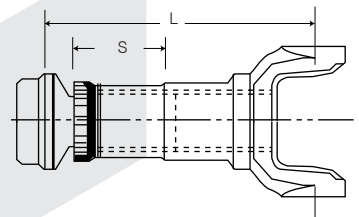
SLIP YOKES



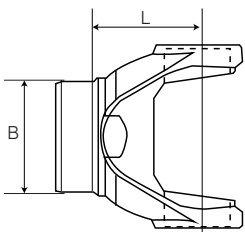
SLIP STUBS



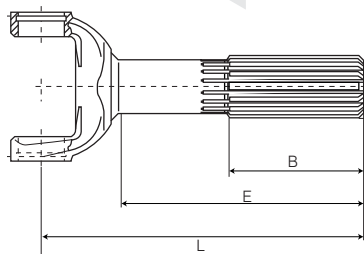
SLIP SETS



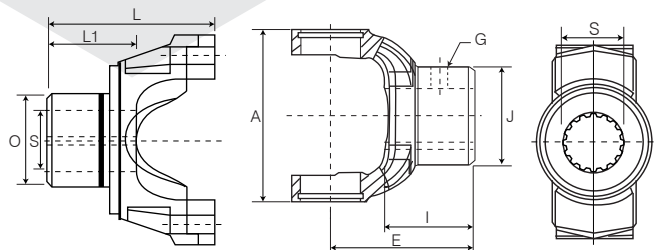
TUBE YOKES



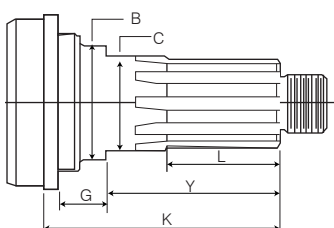
YOKE SHAFTS



END YOKES



MIDSHIP STUBS



1810 SERIES - 49.21 X 191.69 MM

PART NO	ITEM DESCRIPTION	NOTES
UNIVERSAL JOINTS		
5-281X	1810 SERIES 49.21 X 191.69	STD
5-281XP	1810 SERIES 49.21 X 191.69	PREMIUM, THR/W
5-281XR	1810 SERIES 49.21 X 191.69	THRUST WASHER
5-676X	1810 SERIES 49.21 X 191.69 QUICK RELEASE	STD
5-676XP	1810 SERIES 49.21 X 191.69 QUICK RELEASE	PREMIUM, THR/W
5-676XR	1810 SERIES 49.21 X 191.69 QUICK RELEASE	THRUST WASHER
5-324X	1810 SERIES TO 9CHWD 49.21 X 191.69 / 71.44 X 168.3	
COMPANION FLANGES		
6-5-1-1811	1810 SERIES - 2.375 X 16 SPL C/BRG	
180KV-1-3491	180KV TYPE 10SPL ROADRANGER	
180KV-1-4631	180KV TYPE 54SPL ROADRANGER	
180KV-1-6371	180KV TYPE 39SPL ROCKWELL DIFF	
180KV-1-3201	180KV TYPE 46SPL ROCKWELL DIFF	
FLANGE YOKES		
6-5-2-329	1810 SERIES STD - N = 203.00MM, D = 184.20MM, D1 = 11.13MM (X 12), K = 196.90MM	
6-5-2-359	1810 SERIES - N = 203.00MM, D = 184.20MM, D1 = 11.13MM (X 12), K = 196.90MM	LOW ANGLE
6-5-2-2400000	1810 SERIES - N = 240.00MM	BLANK
6-5-2-15	1810 SERIES 180KV - N = 180.00MM, D = 150.00MM, D1 = 15.20MM (X 4)	
6-5-2-232616	1810 SERIES 6 BOLT NISSAN - D = 200.00MM, D1 = 16.20MM, K = 154.00MM	
6-5-2-M120613	1810 SERIES MITSU 6 BOLT - N = 203.00MM, D = 180.00MM, D1 = 13.10MM, K = 120.00MM	
6-5-2-47	1810 SERIES FUSO 8 BOLT - N = 203.00MM, D = 180.00MM, D1 = 13.10MM, K = 145.00MM	
SLIP YOKES		
6-5-3-1351KX	1810 SERIES - 3.00 X 16SPL, L = 260MM	
6-5-3-1371KX	1810 SERIES - 3.00 X 16SPL, L = 302MM	
6-5-3-1451KX	1810 SERIES - 3.25 X 18SPL, L = 137MM	SHORT COUPLE
SLIP STUBS		
6-40-521	1810 SERIES 2.50 X 16SPL - 4.00, L = 268MM	
6-5-40-201	1810 SERIES 3.00 X 16SPL - 4.50, L = 240MM	
6-5-40-191	1810 SERIES 3.00 X 16SPL - 4.50, L = 286MM	
SLIP SETS		
6-5-6-001	1810 SERIES STD - L = 345MM	
6-5-45-001	1810 SEMI-FINISHED SPLINE SET	
TUBE YOKES		
6-5-28-117	1810 SERIES - 4.50 X .134 / 4.595 X .180	
6-5-28-127	1810 SERIES - 4.50 X .250	

1810 SERIES - 49.21 X 191.69 MM

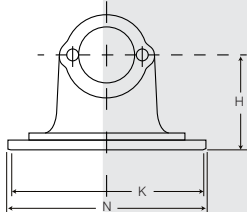
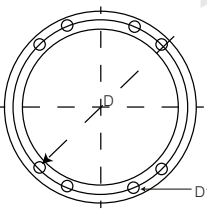
PART NO	ITEM DESCRIPTION	NOTES
YOKE SHAFTS		
6-5-82-451-1	1810 SERIES 3.00 X 16SPL, L = 290MM	
6-5-82-461-11	1810 SERIES 3.00 X 16SPL, L = 398MM	
6-5-82-511-1	1810 SERIES 3.25 X 18SPL, L = 170MM	SHORT COUPLE
6-5-82-511-3	1810 SERIES 3.25 X 18SPL, L = 183MM	SHORT COUPLE
END YOKES		
6-5-4-1891	1810 SERIES 2.344 X 16SPL	SUIT C/BEARING 60MM
6-5-4-1891-1	1810 SERIES 2.344 X 16SPL Q/R	SUIT C/BEARING
6-5-4-2701	1810 SERIES 2.374 X 46SPL, O = 3.25, L = 5.438	
6-5-4-3201	1810 SERIES 2.374 X 46SPL, O = 3.25, L = 5.688	
6-5-4-3251	1810 SERIES 2.374 X 46SPL, O = 3.50, L = 5.406	
6-5-4-3371	1810 SERIES 2.024 X 39SPL, O = 3.00, L = 5.188	
6-5-4-3451	1810 SERIES 2.50 X 10SPL, O = 3.75, L = 5.875	
6-5-4-3491	1810 SERIES 2.75 X 10SPL, O = 3.75, L = 6.062	
6-5-4-3491-1	1810 SERIES 2.75 X 10SPL, O = 3.75, L = 6.062	
6-5-4-3551X	1810 SERIES 2.50 X 10SPL, O = 2.938, L = 5.875	
6-5-4-3591-1	1810 SERIES 2.39 X 46SPL, O = 2.875, L = 5.500	SUIT C/BEARING
6-5-4-3721	1810 SERIES 2.374 X 46SPL, O = 3.25, L = 5.156	
6-5-4-3721-1	1810 SERIES 2.374 X 46SPL, O = 3.25, L = 5.156	
6-5-4-4631	1810 SERIES 2.794 X 54SPL, O = 3.50, L = 5.625	
6-5-4-4631-1	1810 SERIES 2.794 X 54SPL, O = 3.50, L = 5.625	
MIDSHIP STUBS		
6-53-311	1810 SERIES 60MM BRG 2.360 X 16SPL 4.00 TUBE	
6-5-53-181	1810 SERIES 60MM BRG 2.360 X 46SPL 4.50 TUBE	
CENTRE BEARINGS		
210661-1X	1810 SERIES 60MM BRG - BHC = 219.1MM	SLOTTED
210661 -1XSA	1810 SERIES 60MM BRG - BHC = 219.1MM, SELF ALIGNING	SLOTTED
210875 -1X	1810 SERIES 60MM BRG - BHC = 219.1MM	SOLID
210875 -1XSA	1810 SERIES 60MM BRG - BHC = 219.1MM, SELF ALIGNING	SOLID
MIDSHIP C/BEARING ASSEMBLIES		
57-17353	1810 SERIES BOLTING ASSEMBLY - 65MM BEARING	
SPLINED SLEEVES		
6-5-55-A0168	1810 SERIES 3.00 X 16SPL, L=300MM	

1810 SERIES - 49.21 X 191.69 MM

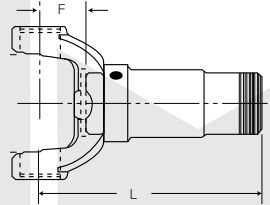
PART NO	ITEM DESCRIPTION	NOTES
SMALL PARTS		
6-5-70-18X	1810 SERIES U/BOLT CLAMP KIT 71MM CENTRES	
212214X	1810 SERIES U/BOLT CLAMP KIT 71MM CENTRES	HEAVY DUTY, FORGED
8-68-13	1810 SERIES WELCH PLUG	STEEL
6-5-68-74	1810 SERIES WELCH PLUG	PLASTIC
6-73-109	1810 SERIES U/J BOLTS	
6-73-209	1810 SERIES U/J BOLTS	SELF LOCK
231502	1810 SERIES MIDSHIP NUT	
230323	1810 SERIES LOCKTABS	
231502W	1810 SERIES HEAVY DUTY WASHER	
6-5-86-38	1810 SERIES DUST CAP	

1880 SERIES - 55.55 X 205.59 MM

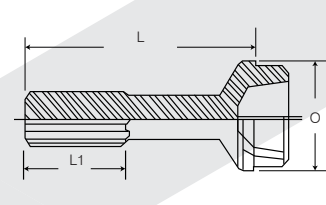
FLANGE YOKES



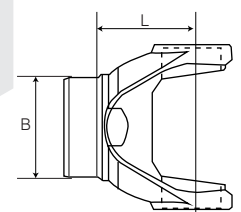
SLIP YOKES



SLIP STUBS



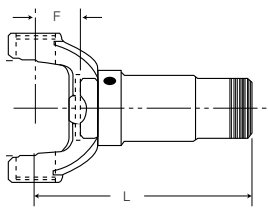
TUBE YOKES



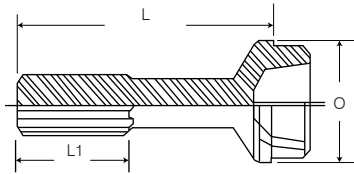
PART NO	ITEM DESCRIPTION	NOTES
UNIVERSAL JOINTS		
5-308X	1880 SERIES 55.55 X 205.59	
FLANGE YOKES		
8-2-109	1880 SERIES STD - N = 241.30MM, D = 209.60MM, D1 = 15.90MM (X 8), K = 177.80MM	
SLIP YOKES		
8-3-391KX	1880 SERIES, L = 255MM	
8-3-411KX	1880 SERIES, L = 290MM	
SLIP STUBS		
6-5-40-201	1880 SERIES 3.00 X 16SPL - 4.50, L = 240MM	
6-5-40-191	1880 SERIES 3.00 X 16SPL - 4.50, L = 286MM	
TUBE YOKES		
8-28-147	1880 SERIES - 4.50 X 0.259	

SPL70 SERIES - 34.93 X 126.20 MM

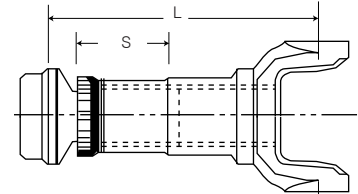
SLIP YOKES



SLIP STUBS



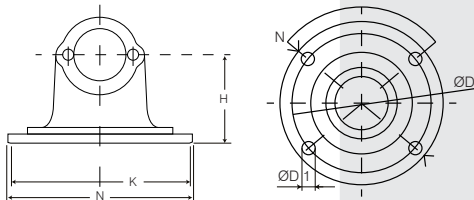
SLIP SETS



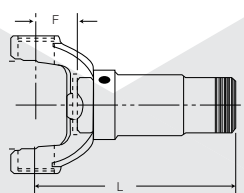
PART NO	ITEM DESCRIPTION	NOTES
UNIVERSAL JOINTS		
SPL70XSFL	SPL70 SERIES 34.93 X 126.20	
SLIP YOKES		
SPL70-3-41X	SPL70 SERIES 110MM SLIP	
SLIP STUBS		
SPL70-40-81X	SPL70 SERIES - 3.50 X .095	
SLIP SETS		
4-6-002	SPL70 SERIES - 3.50 X .083	
SPL70 -382001	SPL70 SERIES - 3.50 X .095 L = 271MM	

SPL90 SERIES - 41.30 X 126.00 MM

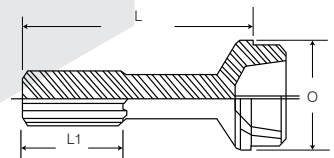
FLANGE YOKES



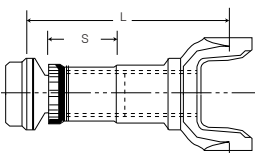
SLIP YOKES



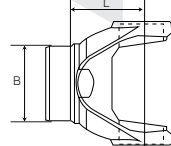
SLIP STUBS



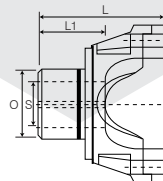
SLIP SETS



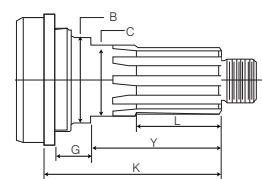
TUBE YOKES



END YOKES



MIDSHIP STUBS



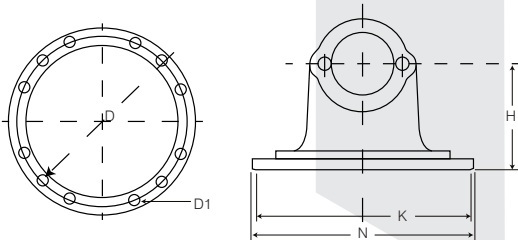
PART NO	ITEM DESCRIPTION	NOTES
UNIVERSAL JOINTS		
SPL90X	SPL90 SERIES 41.30 X 126.00	
FLANGE YOKES		
SPL90-2-15	SPL90 SERIES 150KV - N = 150.00MM, D = 130.00MM, D1 = 13.00MM (X 4)	
SPL90-2-29	SPL90 SERIES 150DIN - N = 150.00MM, D = 130.00MM, D1 = 12.10MM (X 4), K = 90.00MM	
SLIP YOKES		
SPL90-3-21	SPL90 SERIES, L = 256MM	
SPL90-3-41	SPL90 SERIES, L = 210MM	

SPL90 SERIES - 41.30 X 126.00 MM

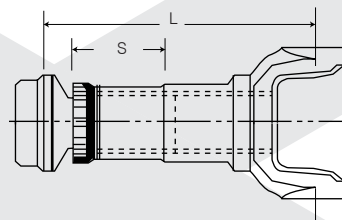
PART NO	ITEM DESCRIPTION	NOTES
SLIP STUBS		
SPL90-40-11	SPL90 SERIES - 30SPL, L = 258MM	
SLIP SETS		
SPL90-6-001	SPL90 SERIES - 30SPL, L = 250MM	
TUBE YOKES		
SPL90-28-27	SPL90 SERIES STD	
END YOKES		
SPL90-4-11-1	SPL90 SERIES, H= 103MM	
MIDSHIP STUBS		
SPL90-53-11	SPL90 SERIES - 44.3 X 34SPL 4.00 TUBE 45MM BRG	
SMALL PARTS		
SBK90	SPL90 SERIES CLAMP KIT	
90-70-28X	SPL90 SERIES STRAP KIT	

SPL170 SERIES - 55.00 X 164.00 MM

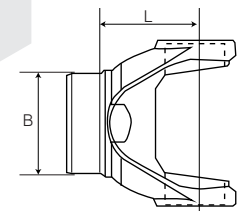
FLANGE YOKES



SLIP SETS



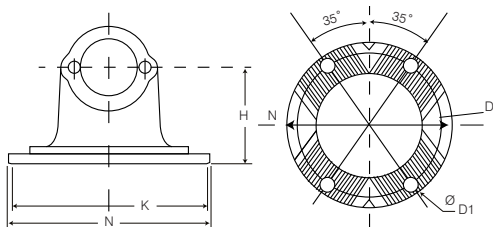
TUBE YOKES



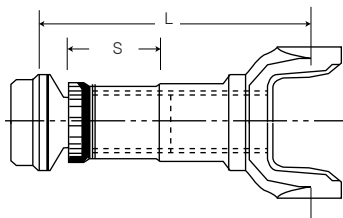
PART NO	ITEM DESCRIPTION	NOTES
UNIVERSAL JOINTS		
SPL170X	SPL170 SERIES 55.00 X 164.00	
SPL170XP	SPL170 SERIES 55.00 X 164.00 - PREMIUM	
FLANGE YOKES		
SPL170-2-19	SPL170 SERIES 1810 BOLTING	
SLIP SETS		
SPL170-6-002	SPL170 SLIP SET	
TUBE YOKES		
SPL170-26-002	SPL170 TUBE YOKE	
SMALL PARTS		
SPL170 -70-18X	SPL170 STRAP KIT	

SPL250 SERIES - 60.00 X 163.00 MM

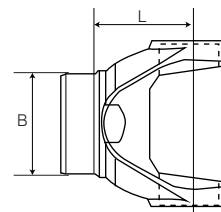
FLANGE YOKES



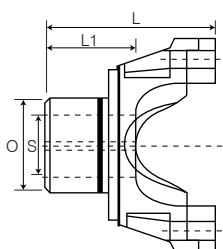
SLIP SETS



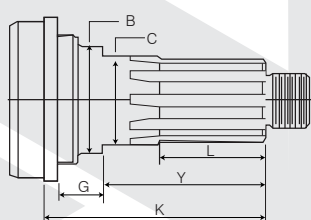
TUBE YOKES



END YOKES



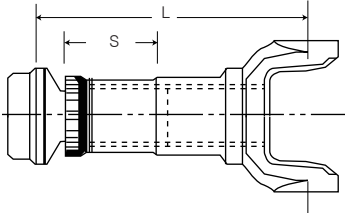
MIDSHIP STUBS



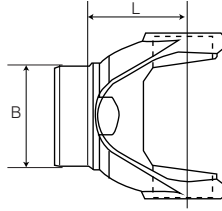
PART NO	ITEM DESCRIPTION	NOTES
UNIVERSAL JOINTS		
SPL250X	SPL250 SERIES 60X163	
SPL250XP	SPL250 SERIES 60X163 - PREMIUM	
FLANGE YOKES		
SPL250-2-15	SPL250 SERIES 180KV - N = 180.00MM, D = 150.00MM, D1 = 15.20MM (X 4)	
SLIP SETS		
SPL250-6-001	SPL250 SERIES SLIP SET, L = 292MM	
SPL250-6-002	SPL250 SERIES SLIP SET - LONG SERIES, L = 363MM	
TUBE YOKES		
SPL250-28-17	SPL250 SERIES TUBE YOKE	
END YOKES		
SPL250-4-351-1X	SPL250 SERIES END YOKE 2.374 X 46SPL	
SPL250-4-221-1X	SPL250 SERIES 2.75 X 10 SPL, SEAL DIA = 3.75, H = 6.75	
SPL250-4-21-1	SPL250 SERIES YOKE C/BEARING	
MIDSHIP STUBS		
SPL250-53-11	SPL250 SERIES 2.36 X 46SPL 132 X 6 TUBE, 60MM BRG	
SMALL PARTS		
SPL250-70-18X	SPL250 SERIES CLAMP KIT 87MM CENTRES	
SPL250-74-11	SPL250 SERIES MIDSHIP NUT	

RPL20 SERIES - 52.33 X 174.75 MM

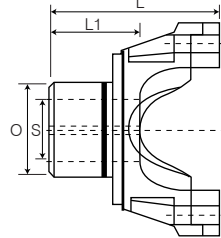
SLIP SETS



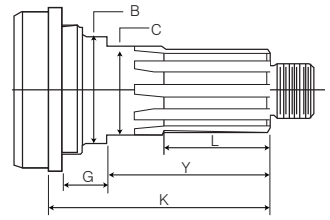
TUBE YOKES



END YOKES



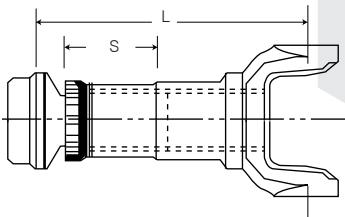
MIDSHIP STUBS



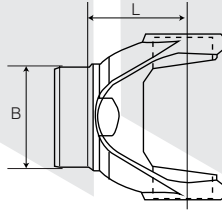
PART NO	ITEM DESCRIPTION	NOTES
UNIVERSAL JOINTS		
CP20-RPLS	RPL20 SERIES 52.33 X 174.75 / 71.3 X 134.6HWD	
TUBE YOKES		
20RY60-6	RPL20 SERIES - 4.00 TUBE, L = 94MM	
20RY60-7	RPL20 SERIES - 4.00 TUBE, L = 133.4MM	
DRIVESHAFTS		
20RHM025B156H	RPL20 SERIES INTERAXLE, C - C=396MM CLOSED	
20RHM008B162H	RPL20 SERIES INTERAXLE, C - C=415MM CLOSED	
20RHM020B192	RPL20 SERIES INTERAXLE, C - C=490MM CLOSED	

RPL25 SERIES - 52.33 X 208.28 MM

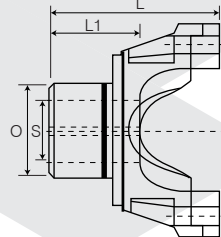
SLIP SETS



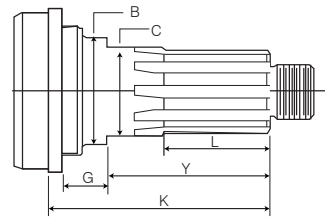
TUBE YOKES



END YOKES

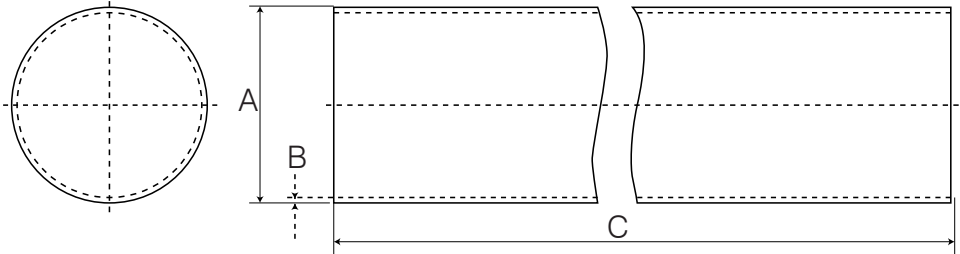


MIDSHIP STUBS



PART NO	ITEM DESCRIPTION	NOTES
UNIVERSAL JOINTS		
CP25-RPLS	RPL25 SERIES 52.33 X 208.28 / 71.3 X 168.4HWD	
SLIP SETS		
25RPL-SLIP	RPL25 SERIES SLIP SET	
TUBE YOKES		
25RY68-3	RPL25 SERIES TUBE YOKE	
END YOKES		
25WYSC38-11	RPL25 SERIES END YOKE	

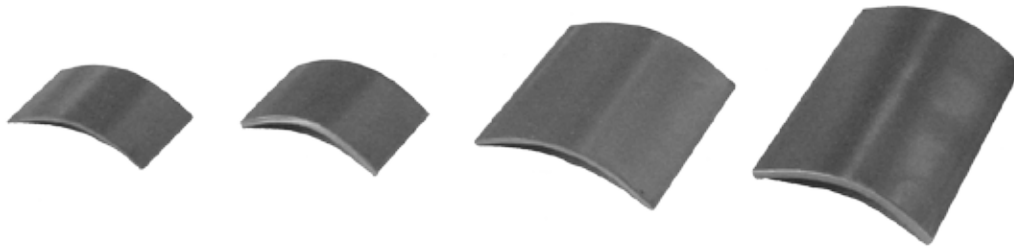
DRIVESHAFT TUBING - IMPERIAL



PART NO	DESC.	DIMENSIONS (MM)		
		A O.D	B Wall thickness	C Lengths (M)
T100	1.00 X .125	25.4	3.2	3-4
T105	1.50 X .065	38.1	1.65	4
T110	1.75 X .065	44.5	1.65	2-3
T115	2.00 X .065	51.0	1.65	5-6
T120	2.00 X .083	51.0	2.11	5-6
T125	2.00 X .095	51.0	2.4	5-6
T130	2.00 X .120	51.0	3.2	5-6
T140	2.25 X .065	57.0	1.65	2-3
T145	2.25 X .095	57.0	2.4	2-3
T135	2.25 X .125	57.0	3.2	2-3
T155	2.50 X .065	63.5	1.65	5-6
T150	2.50 X .083	63.5	2.11	5-6
T160	2.50 X .095	63.5	2.4	5-6
T165	2.50 X .125	63.5	3.2	5-6
T170	2.50 X .250	63.5	6.35	5-6
T175	2.75 X .065	70.0	1.65	5-6
T180	2.75 X .083	70.0	2.11	5-6
T185	2.75 X .125	70.0	3.2	5-6
T190	3.00 X .065	76.2	1.65	5-6
T195	3.00 X .083	76.2	2.11	5-6
T200	3.00 X .095	76.2	2.4	5-6

PART NO	DESC.	DIMENSIONS (MM)		
		A O.D	B Wall thickness	C Lengths (M)
T205	3.00 X .125	76.2	3.2	5-6
T210	3.00 X .250	76.2	6.35	4-5
T220	3.25 X .065	82.6	1.65	2-3
T225	3.25 X .125	82.6	3.2	5-6
T235	3.50 X .065	88.9	1.65	5-6
T240	3.50 X .083	88.9	2.11	5-6
T245	3.50 X .095	88.9	2.4	5-6
T250	3.50 X .134	88.9	3.4	5-6
T255	3.50 X .156	88.9	3.96	2-3
T260	3.50 X .250	88.9	6.35	5-6
T285	4.00 X .063	101.6	1.6	2-3
T280	4.00 X .083	101.6	2.11	2-3
T290	4.00 X .134	101.6	3.4	5-6
T295	4.00 X .250	101.6	6.35	5-6
T300	4.095 X .180	104.0	4.57	5-6
T310	4.50 X .134	114.3	3.4	5-6
T315	4.50 X .250	114.3	6.35	5-6
T320	4.59 X .180	116.64	4.57	5-6
T340	5.00 X .250	127.0	6.35	5-6
T350	5.50 X .250	139.7	6.35	5-6

BALANCE WEIGHTS



PART NO	ITEM DESCRIPTION	NOTES
BW05G	5 GRAM WEIGHTS	0.176 OZ / 100 PACK
BW10G	10 GRAM WEIGHTS	0.353 OZ / 100 PACK
BW20G	20 GRAM WEIGHTS	0.705 OZ / 100 PACK
BW30G	30 GRAM WEIGHTS	1.06 OZ / 100 PACK
BW40G	40 GRAM WEIGHTS	1.41 OZ / INDIVIDUAL
BW60G	60 GRAM WEIGHTS	2.12 OZ / INDIVIDUAL
BW80G	80 GRAM WEIGHTS	2.82 OZ / INDIVIDUAL
BW100G	100 GRAM WEIGHTS	3.53 OZ / INDIVIDUAL

UJ BOLT KIT TORQUE SPECIFICATIONS

SERIES	FIXING TYPE	RECOMMENDED TORQUE RANGE	SERIES	FIXING TYPE	RECOMMENDED TORQUE RANGE
1310	U-BOLT	19 - 23 Nm / 14 - 17 Ft/Lbs	1710	BEARING STRAP	176 - 183 Nm / 130 - 135 Ft/Lbs
1330	U-BOLT	19 - 23 Nm / 14 - 17 Ft/Lbs	1760	BEARING STRAP	176 - 183 Nm / 130 - 135 Ft/Lbs
1350	U-BOLT	27 - 33 Nm / 20 - 24 Ft/Lbs	1810	BEARING STRAP	176 - 183 Nm / 130 - 135 Ft/Lbs
1410	U-BOLT	27 - 33 Nm / 20 - 24 Ft/Lbs	1610	BEARING PLATE - SELF LOCK	35 - 47 Nm / 26 - 35 Ft/Lbs
1480	U-BOLT	43 - 50 Nm / 32 - 37 Ft/Lbs	1710	BEARING PLATE - SELF LOCK	52 - 65 Nm / 38 - 48 Ft/Lbs
1550	U-BOLT	43 - 50 Nm / 32 - 37 Ft/Lbs	1760	BEARING PLATE - SELF LOCK	52 - 65 Nm / 38 - 48 Ft/Lbs
SPL90	BEARING STRAP	61 - 81 Nm / 45 - 60 Ft/Lbs	1810	BEARING PLATE - SELF LOCK	52 - 65 Nm / 38 - 48 Ft/Lbs
1210	BEARING STRAP	18 - 24 Nm / 13 - 18 Ft/Lbs	1880	BEARING PLATE - SELF LOCK	81 - 95 Nm / 60 - 70 Ft/Lbs
1310	BEARING STRAP	18 - 24 Nm / 13 - 18 Ft/Lbs	1610	BEARING PLATE - LOCK STRAP	23 - 33 Nm / 17 - 24 Ft/Lbs
1330	BEARING STRAP	18 - 24 Nm / 13 - 18 Ft/Lbs	1710	BEARING PLATE - LOCK STRAP	43 - 57 Nm / 32 - 42 Ft/Lbs
3R	BEARING STRAP	41 - 47 Nm / 30 - 35 Ft/Lbs	1760	BEARING PLATE - LOCK STRAP	43 - 57 Nm / 32 - 42 Ft/Lbs
1350	BEARING STRAP	41 - 47 Nm / 30 - 35 Ft/Lbs	1810	BEARING PLATE - LOCK STRAP	43 - 57 Nm / 32 - 42 Ft/Lbs
1410	BEARING STRAP	41 - 47 Nm / 30 - 35 Ft/Lbs	SPL170	SPL BEARING STRAP	155 - 183 Nm / 115 - 135 Ft/Lbs
1480	BEARING STRAP	75 - 81 Nm / 55 - 60 Ft/Lbs	SPL250	SPL BEARING STRAP	155 - 183 Nm / 115 - 135 Ft/Lbs
1550	BEARING STRAP	75 - 81 Nm / 55 - 60 Ft/Lbs	RPL20	RPL CAPSCREWS - 1/2"	155 - 183 Nm / 115 - 135 Ft/Lbs
1610	BEARING STRAP	75 - 81 Nm / 55 - 60 Ft/Lbs	RPL25	RPL CAPSCREWS - 1/2"	155 - 183 Nm / 115 - 135 Ft/Lbs

IMPORTANT - BEARING STRAP RETAINING BOLTS & SELF LOCKING BEARING PLATE BOLTS SHOULD **NOT BE REUSED**

UNIVERSAL JOINT TORQUE RATING GUIDE

UNIVERSAL JOINT BASIC TORQUE RATINGS			
SERIES	RATING 1*	RATING 2**	SHORT DURATION ***
500	51 Nm	81 Nm	254 Nm
	37.6 Ft/Lbs	59.7 Ft/Lbs	187.3 Ft/Lbs
1000	68 Nm	102 Nm	420 Nm
	50.2 Ft/Lbs	75.2 Ft/Lbs	309.8 Ft/Lbs
1140	111 Nm	146 Nm	596 Nm
	81.8 Ft/Lbs	107.7 Ft/Lbs	439.5 Ft/Lbs
1300	162 Nm	244 Nm	815 Nm
	119.5 Ft/Lbs	179.7 Ft/Lbs	601 Ft/Lbs
1310	176 Nm	264 Nm	1085 Nm
	129.8 Ft/Lbs	194.7 Ft/Lbs	800.1 Ft/Lbs
1330	203 Nm	298 Nm	1206 Nm
	149.7 Ft/Lbs	219.8 Ft/Lbs	889.4 Ft/Lbs
1350	286 Nm	420 Nm	1681 Nm
	210.9 Ft/Lbs	309.7 Ft/Lbs	1239.7 Ft/Lbs
1410	339 Nm	508 Nm	2034 Nm
	250.0 Ft/Lbs	374.6 Ft/Lbs	1500.0 Ft/Lbs
1480	461 Nm	678 Nm	2259 Nm
	340.0 Ft/Lbs	500.0 Ft/Lbs	1666.2 Ft/Lbs
1510	498 Nm	747 Nm	2490 Nm
	367.3 Ft/Lbs	550.9 Ft/Lbs	1836.3 Ft/Lbs
1550	582 Nm	868 Nm	3254 Nm
	429.2 Ft/Lbs	640.1 Ft/Lbs	2399.7 Ft/Lbs
1610	867 Nm	1322 Nm	4948 Nm
	639.4 Ft/Lbs	974.9 Ft/Lbs	3649.0 Ft/Lbs
1710	1220 Nm	1803 Nm	6508 Nm
	899.7 Ft/Lbs	1329.6 Ft/Lbs	4799.4 Ft/Lbs
1760	1490 Nm	2210 Nm	7864 Nm
	1098.8 Ft/Lbs	1629.8 Ft/Lbs	5799.4 Ft/Lbs
1810	1695 Nm	2508 Nm	8812 Nm
	1250.0 Ft/Lbs	1849.5 Ft/Lbs	6498.5 Ft/Lbs
SPL170	1708 Nm	2562 Nm	8200 Nm
	1253.0 Ft/Lbs	1880.8 Ft/Lbs	6020.0 Ft/Lbs
SPL250	2500 Nm	3750 Nm	12000 Nm
	1844.0 Ft/Lbs	2766.0 Ft/Lbs	8850.0 Ft/Lbs
RPL20	1708 Nm	2562 Nm	16269 Nm
	1253.0 Ft/Lbs	1880.8 Ft/Lbs	12000.0 Ft/Lbs
RPL25	2500 Nm	3750 Nm	23319 Nm
	1844.0 Ft/Lbs	2766.0 Ft/Lbs	17200.0 Ft/Lbs

*RATING 1

Suits diesel/petrol engine, 3deg. joint angle, 3000rpm, 5000 hrs life

**RATING 1

Suits electric motor, 3deg. joint angle, 1750rpm, 3000 hrs life

***SHORT DURATION

Maximum rated input torque capacity

IMPORTANT - RATINGS IN THIS TABLE ARE A GUIDE ONLY. FOR SELECTION OF SERIES PLEASE CONSULT WITH BEATTYS DRIVELINE TECHNOLOGIES TO ENSURE ALL CONTRIBUTING FACTORS ARE ALLOWED FOR.



We're here for the long haul.

The Beattys logo consists of the word "Beattys" in a white, sans-serif font, with a small orange square above the letter 't'. The logo is centered within a dark grey circle.

Beattys

Beattys Group Ltd (New Zealand)

4 Harbour Ridge Drive, Wiri, Auckland 2104
PO Box 97410, Manukau City, Auckland 2241

Phone +64 9 263 7761

Fax +64 9 262 0970

sales@beattys.com