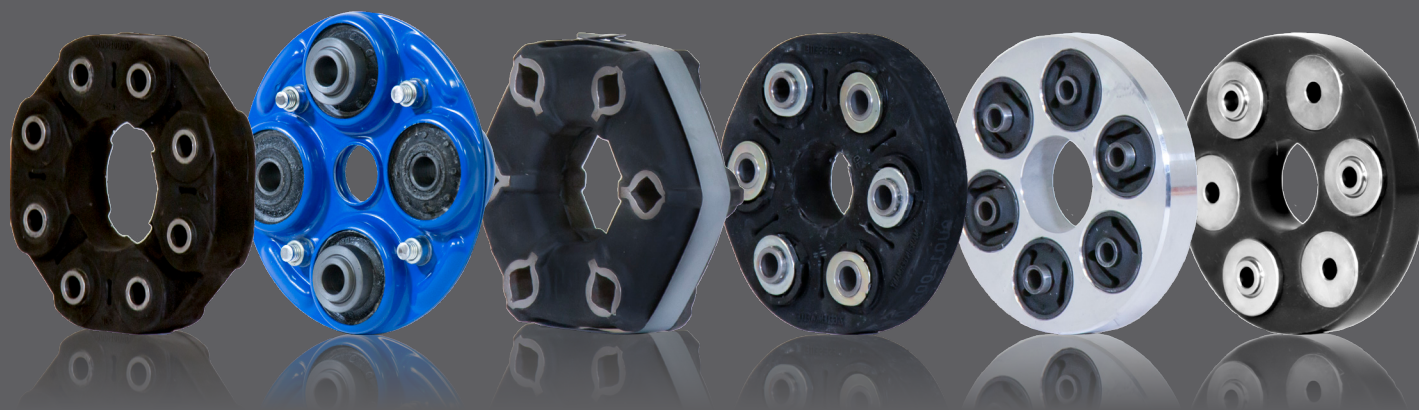
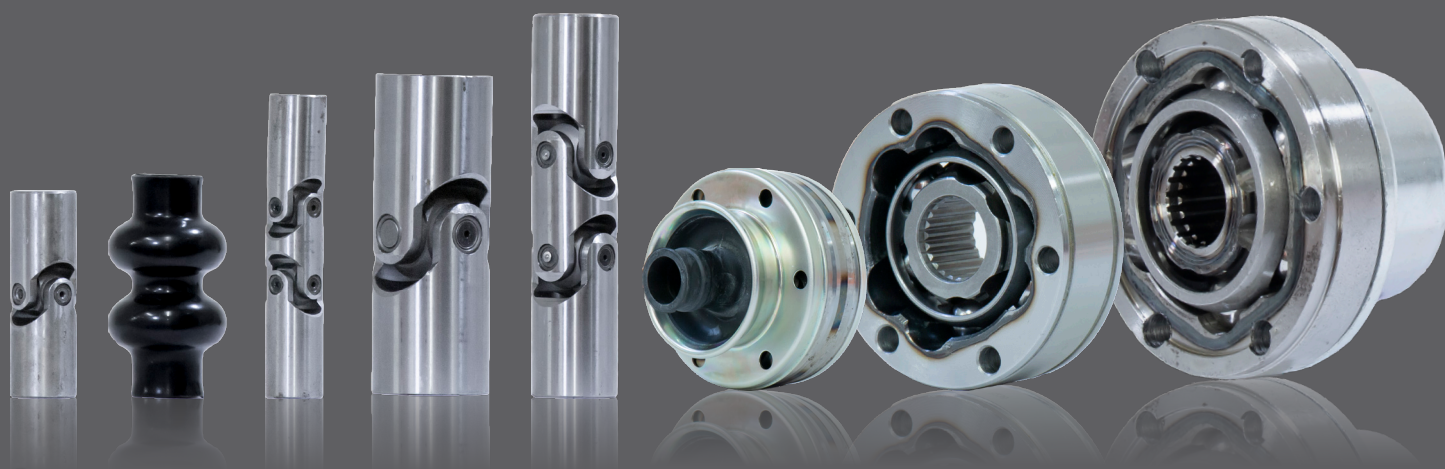


FLEXIBLE COUPLINGS, CV JOINTS & PRECISION COUPLINGS

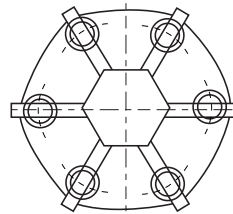


CONTENTS

Flexible Drive Couplings - BMW , Ford	Pg 4
Flexible Drive Couplings - Holden, Hyundai / Kia, Jaguar	Pg 5
Flexible Drive Couplings - Mercedes, Toyota, Volkswagen	Pg 6
Flexible Drive Couplings - Layrub Style	Pg 7
RWD CV Parts - Ford, Holden	Pg 8
RWD CV Parts - Nissan, Volvo	Pg 9
Industrial / Marine CV Joints & Shafts	Pg 10
Precision Couplings with Hardened Bushes - Single & Double	Pg 11
Precision Couplings with Plain Pin - Single	Pg 12
Precision Couplings with Needle Bearings - Single	Pg 12
Precision Couplings with Needle Bearings - Double	Pg 13
Precision Couplings in Stainless Steel - Single	Pg 13
Precision Couplings in Stainless Steel - Double	Pg 14
Boots to suit Precision Couplings	Pg 15
Precision Shafts with Hardened Bush Joints	Pg 16
Precision Shafts with Plain Pin Joints	Pg 17
Precision Shafts with Needle Bearing Joints	Pg 18
Precision Shafts in Stainless Steel	Pg 19
Torque Ratings - Couplings with Hardened Bushes	Pg 20
Torque Ratings - Couplings with Plain Pin	Pg 21
Torque Ratings - Couplings with Needle Bearings	Pg 22
Torque Ratings - Couplings in Stainless Steel	Pg 23

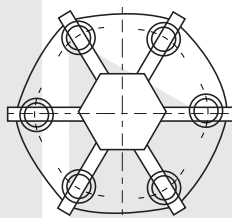
PLEASE CONTACT US TO CONFIRM AVAILABILITY OF LISTED COMPONENTRY - OTHER PARTS & SERIES NOT SHOWN MAY BE AVAILABLE ON APPLICATION - PLEASE ENQUIRE.

FLEXIBLE DRIVE COUPLINGS - BMW



PART NO	ITEM DESCRIPTION	NOTES
FLEXIBLE COUPLINGS		
R-CBMW-1	BMW FLEXIBLE COUPLING - PCD 76MM, 8 X 10MM BOLTS, OD 107MM	ALL 3/5 SERIES '80
R-CBMW-2	BMW FLEXIBLE COUPLING - PCD 78MM, 6 X 10MM BOLTS, OD 107MM	4/6 CYL. 2.3LT AUTO '76- /MAN '80-
R-CBMW-5	BMW FLEXIBLE COUPLING - PCD 97MM, 6 X 12MM BOLTS, OD 133MM	6/7 SERIES MAN '80

FLEXIBLE DRIVE COUPLINGS - FORD



PART NO	ITEM DESCRIPTION	NOTES
FLEXIBLE COUPLINGS		
MUC-104	FORD FLEXIBLE COUPLING - PCD 100MM, 6 X 12MM BOLTS, 46MM THICK	CORTINA MK3
MUC-105	FORD FLEXIBLE COUPLING - PCD 94MM , 6 X 12MM BOLTS, 43MM THICK	CORTINA MK4
RS1375GK	FORD FLEXIBLE COUPLING - PCD 94MM , 6 X 12MM BOLTS, 43MM THICK	CORTINA MK5 - WITH SNOOT / SLEEVE
GAJ-1-0	FORD FLEXIBLE COUPLING - PCD 96MM, 6 X 12MM BOLTS, OD 134MM	FALCON BA / BF 6CYL (EXCL TURBO)
GAG03-001-0	FORD FLEXIBLE COUPLING - PCD 105MM, 6 X 12MM BOLTS, OD 142MM	FALCON BA / BF V8 & TURBO 6CYL
R-CJUR-1	FORD FLEXIBLE COUPLING - PCD 96MM, 6 X 12MM BOLTS, OD 130MM	SIERRA / ALSO JAGUAR
CENTERING BUSHES		
UD-32-140	CENTERING BUSH 32 OD X 16 BORE	SUITS MOST FORD & COMMODORE SHAFTS

FLEXIBLE DRIVE COUPLINGS - HOLDEN



PART NO	ITEM DESCRIPTION	NOTES
FLEXIBLE COUPLINGS		
10005422	COMMODORE FLEXIBLE COUPLING - PCD 96MM, 6 X 12MM BOLTS, OD 133MM	VT SER 2 - 6/99-, V8
RC-10532-01	COMMODORE FLEXIBLE COUPLING - PCD 105MM, OD 141MM, 35MM TH. INCL SPIG	VE V6 F&R 3/08-
RCA-1058	COMMODORE FLEXIBLE COUPLING - PCD 100MM, OD 149MM, 40MM TH. INCL SPIG	VT SER 1 -6/99 V8 MAN.
RCA-1060	COMMODORE FLEXIBLE COUPLING - PCD 96MM, 6 X 12MM BOLTS, OD 132MM	VX-VZ/VE -08, V6 AUT F&R , MAN F
RCA-1061	COMMODORE FLEXIBLE COUPLING - PCD 96MM, 6 X 12MM BOLTS, OD 133MM	VX-VZ V8/ VX-VE -08 REAR
RCA-1062	COMMODORE FLEXIBLE COUPLING - PCD 110MM, 6 X 12MM BOLTS, OD 152MM	VE V8 F&R

FLEXIBLE DRIVE COUPLINGS - HYUNDAI / KIA

PART NO	ITEM DESCRIPTION	NOTES
FLEXIBLE COUPLINGS		
GAH04-001-0	HYUNDAI/KIA FLEXIBLE COUPLING - PCD 78MM, 6 X 12MM BOLTS, OD 111MM	SANTE FE V6/TUCSON/SPORTAGE V6 2.7L

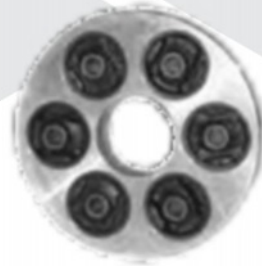
FLEXIBLE DRIVE COUPLINGS - JAGUAR

PART NO	ITEM DESCRIPTION	NOTES
FLEXIBLE COUPLINGS		
R-CJUR-1	JAGUAR FLEXIBLE COUPLING - PCD 96MM, 6 X 12MM BOLTS, OD 130MM	ALSO SUITS BMW, FORD, VAUXHALL, VOLVO
R-CJUR-2	JAGUAR FLEXIBLE COUPLING - PCD 96MM, OD 130MM, 35MM THICK	
CENTERING BUSHES		
R-CJUR-1CB14	GUIBO CENTRE BUSH - SUIT 14MM PIN	
R-CJUR-1CB16	GUIBO CENTRE BUSH - SUIT 16MM PIN	
TUBE YOKES		
R/CJUR-1FL	3 ARM TUBE YOKE - TO SUIT R/CJUR-2 COUPLING	

FLEXIBLE DRIVE COUPLINGS - MERCEDES

PART NO	ITEM DESCRIPTION	NOTES
FLEXIBLE COUPLINGS		
R-CMER-8	MERCEDES FLEXIBLE COUPLING - PCD 80MM, 6 X 10MM BOLTS, OD 128MM	190/200/250 E-D '88-
R-CMER-6	MERCEDES FLEXIBLE COUPLING - PCD 90MM, 6 X 10MM BOLTS, OD 124MM	200-250 SERIES, '68-'75
R-CMER-3	MERCEDES FLEXIBLE COUPLING - PCD 90MM, 6 X 10MM BOLTS, OD 128MM	250/280/350 E, S, SE, SL
R-CMER-1	MERCEDES FLEXIBLE COUPLING - PCD 110MM, 6 X 12MM BOLTS, OD 150MM	380/420/500 SE, SEL - SL 84-

FLEXIBLE DRIVE COUPLINGS - TOYOTA



PART NO	ITEM DESCRIPTION	NOTES
FLEXIBLE COUPLINGS		
TO-RB-005-12	TOYOTA FLEXIBLE COUPLING - PCD 80MM, 12MM BUSH, OD 125MM	PREVIA / TARAGO PETROL
TO-RB-305-14	TOYOTA FLEXIBLE COUPLING - PCD 80MM, 14MM BUSH, OD 125MM	PREVIA / TARAGO PETROL
TO-RB-006-14	TOYOTA FLEXIBLE COUPLING - PCD 85MM, 14MM BUSH, OD 129MM	PREVIA / TARAGO DIESEL

FLEXIBLE DRIVE COUPLINGS - VOLKSWAGEN



PART NO	ITEM DESCRIPTION	NOTES
FLEXIBLE COUPLINGS		
GAP01-003	VW FLEXIBLE COUPLING - PCD 110MM, 6 X 12MM BOLTS 38MM THICK INCL SPIGOT	TOUAREG

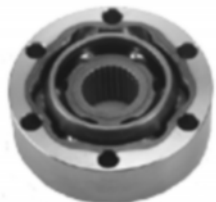
FLEXIBLE DRIVE COUPLINGS - LAYRUB STYLE



PART NO	ITEM DESCRIPTION	NOTES
FLEXIBLE COUPLINGS		
LA21001	LAYRUB COUPLING TYPE 40 - 2/4, PCD 65.08MM, OD 102MM, M10 BOLT	
LA21002	LAYRUB COUPLING TYPE 50 - 2/4, PCD 80.96MM, OD 128MM, M12 BOLT	
LA21003	LAYRUB COUPLING TYPE 55 - 2/4, PCD 88.00MM, OD 140MM, M12 BOLT	
LA21007	LAYRUB COUPLING TYPE 70 - 2/4, PCD 109.54MM, OD 178MM, M14 BOLT	
LA21010	LAYRUB COUPLING TYPE 80 - 2/4, PCD 125.42MM, OD 203MM, M16 BOLT	
LA21013	LAYRUB COUPLING TYPE 100 - 2/4, PCD 157.12MM, OD 254MM, M20 BOLT	
TUBE YOKE		
LA100-26-001	LAYRUB TUBE YOKE - 3.00 TUBE	

RWD CV PARTS - FORD

CV JOINT



CV BOOT



PART NO	ITEM DESCRIPTION	NOTES
CV JOINTS		
CV860	FORD FALCON BA V8, XR6 & XR8 REAR CV JOINT KIT - 86MM PCD X 32 SPL, 99.4MM O.D.	WITH CENTRE U/J
CV861	FORD FALCON BA V8, XR6 & XR8 REAR CV JOINT KIT - 86MM PCD X 25 SPL, 100MM O.D.	WITH CENTRE C/V
86-H288	FORD FALCON BA V8, XR6 & XR8 MIDDLE CV JOINT ONLY - 94MM PCD X 28 SPL, 108MM O.D.	WITH CENTRE C/V
CV BOOTS		
CV877	FORD FALCON BOOT KIT	PART OF CV860
CV866	FORD FALCON BOOT KIT	PART OF CV861
CV863	FORD FALCON BOOT KIT	

RWD CV PARTS - HOLDEN

CV JOINT



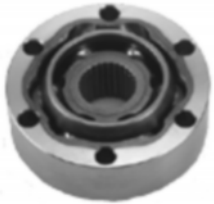
CV BOOT



PART NO	ITEM DESCRIPTION	NOTES
CV JOINT SERVICE KITS		
CV856	HOLDEN COMMODORE 6CYL CV SERVICE KIT - 80MM PCD X 24 SPL, 94MM O.D	MODELS VB - VL
CV855	HOLDEN COMMODORE 8CYL CV SERVICE KIT - 86MM PCD X 25 SPL, 100MM O.D	ALSO 6CYL VN ON
86-H288	HOLDEN COMMODORE IRS CV SERVICE KIT - 94MM PCD X 28 SPL, 108MM O.D	VN-VSII, VT, VX-VZ
86-H336	HOLDEN COMMODORE IRS REAR SHAFT OUTER CV KIT - 108 X 27 SPLINE	VSII, VT, VX-VZ
CV BOOT KITS		
CV852	HOLDEN COMMODORE 6CYL CV BOOT KIT ONLY	
CV853	HOLDEN COMMODORE 8CYL CV BOOT KIT ONLY	
93-289	HOLDEN COMMODORE IRS CV BOOT KIT ONLY - 6 BOLT FLANGE, 108MM	SUITS 86-H288 FOR IRS

RWD CV PARTS - NISSAN

CV JOINT



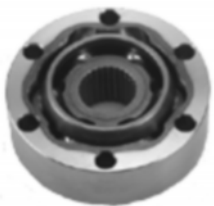
CV BOOT



PART NO	ITEM DESCRIPTION	NOTES
CV JOINT SERVICE KITS		
CV856	NISSAN SKYLINE CV SERVICE KIT - 80MM PCD X 24 SPL, 94MM O.D	MODEL R31 1986 - 1988
CV855	NISSAN SKYLINE CV SERVICE KIT - 86MM PCD X 25 SPL, 100MM O.D	MODEL R31 6/88 - 1991
CV BOOT KITS		
CV852	NISSAN SKYLINE CV BOOT KIT ONLY	TO SUIT CV856
CV853	NISSAN SKYLINE CV BOOT KIT ONLY	TO SUIT CV855

RWD CV PARTS - VOLVO

CV JOINT



CV BOOT

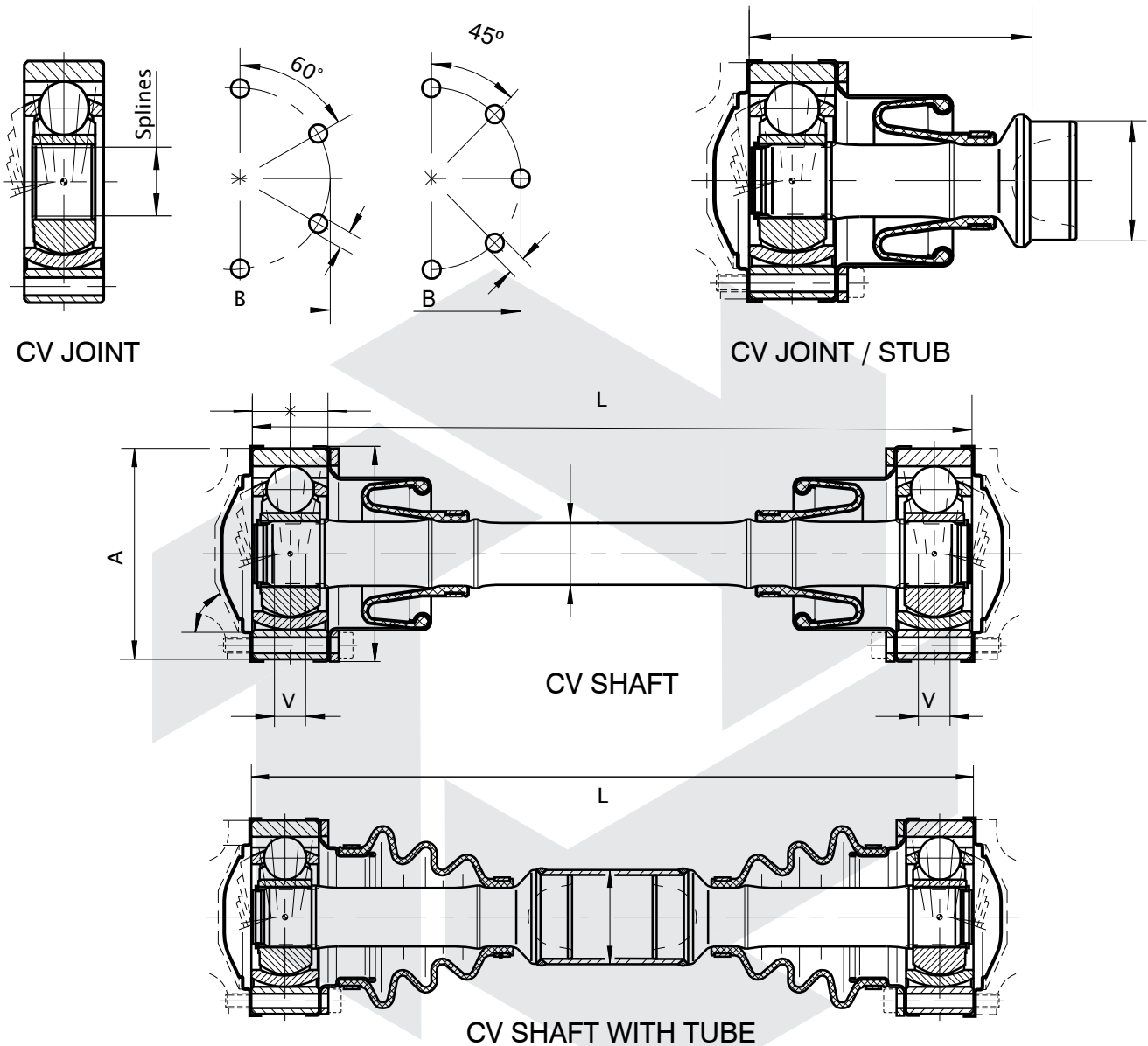


CV END COVER



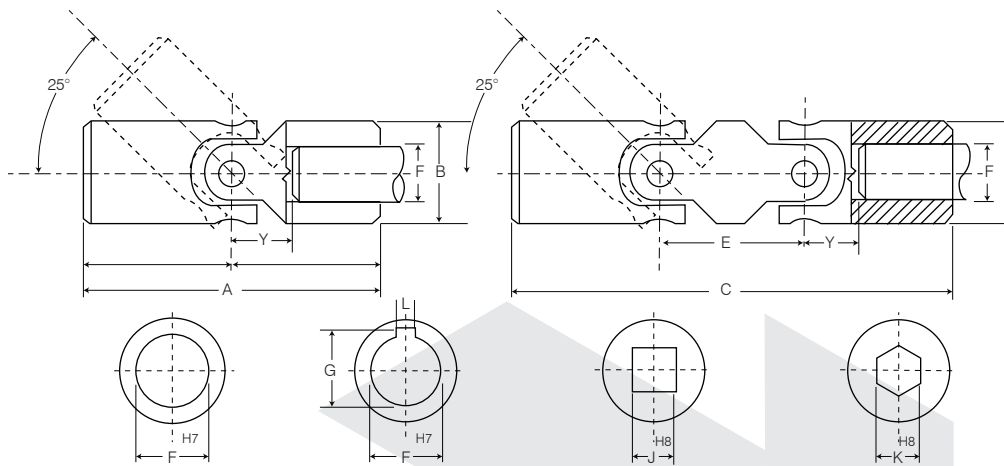
PART NO	ITEM DESCRIPTION	NOTES
CV JOINTS		
CVJ-V1	VOLVO XC-90 CV PLUNGING JOINT - 65MM PCD X 24 SPL, 78MM O.D.	
CV BOOT KIT		
CVB-V1	VOLVO XC-90 RUBBER BOOT	
CV SMALL PARTS		
CVC-V1	VOLVO XC-90 CV END COVER	

INDUSTRIAL / MARINE CV JOINTS & SHAFTS



JOINT SIZE	MAX TORQUE [Nm]	MAX JOINT ANGLE [°]	OUTSIDE DIA - A [mm]	BOLT HOLE PCD - B [mm]	SPLINE COUNT [No. of teeth]	PLUNGE PER JOINT - V [mm]	MIN LENGTH - L [mm]
05	1500	10	86	74	20	16	130
10	2300	10	94	80	24	12	150
13	2900	10	99.73	86	25	22	160
15	3700	10	108	94	28	16	160
21	6000	10	128	108	33	24	210
30	9200	10	148	128	33	25	245
32	13200	10	180	155.5	41	25	300
42	19700	10	192	165	41	N/A	270

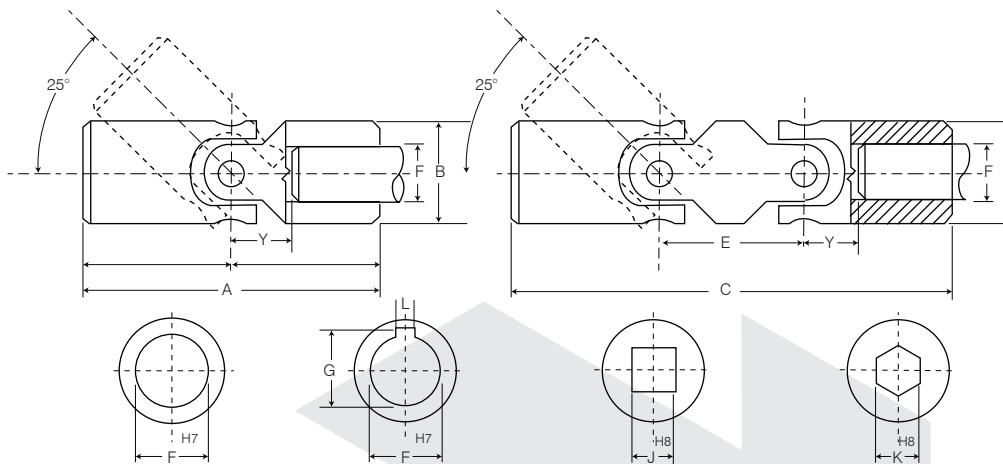
PRECISION COUPLINGS WITH HARDENED BUSHES



Y - JOINT CENTRE TO SHAFT END MIN. = B/2 + 2

PART NO		ITEM DESCRIPTION	DIMENSIONS/MAX. RECOMMENDED MACHINING								
SINGLE JOINTS			A Min.	A Std.	B Dia.	F Plain Bore	G Bore & Keyway	L Keyway	J Square Bore	K Hex Bore	
102A		16MM X 56MM SINGLE	40	56	16	8	9	2	-	-	
103A		22MM X 76MM SINGLE	45	76	22	10	11.4	3	10	10	
104A		25MM X 86MM SINGLE	50	86	25	12	13.8	4	12	12	
105A		29MM X 90MM SINGLE	56	90	29	14	16.3	5	14	14	
106A		32MM X 95MM SINGLE	65	95	32	16	18.3	5	16	16	
107A		37MM X 108MM SINGLE	72	108	37	18	20.8	6	18	18	
108A		40MM X 127MM SINGLE	82	127	40	20	22.8	6	20	20	
109A		47MM X 127MM SINGLE	95	127	47	22	24.8	6	22	22	
110A		50MM X 140MM SINGLE	108	140	50	25	28.3	8	25	25	
111A		58MM X 166MM SINGLE	122	166	58	30	33.3	8	30	35	
111/1A		63MM X 178MM SINGLE	140	178	63	30	33.3	8	30	35	
112A		70MM X 178MM SINGLE	140	178	70	35	38.3	10	30	35	
113A		80MM X 210MM SINGLE	160	210	80	40	43.3	12	30	35	
114A		95MM X 254MM SINGLE	190	254	95	50	53.8	14	30	35	
DOUBLE JOINTS			C Min.	C Std.	B Dia.	E Joint Centres	F Plain Bore	G Bore & Keyway	L Keyway	J Square Bore	K Hex Bore
103AD		20MM X 76MM DOUBLE	-	75	20	30	10	11.4	3	10	10
104AD		22MM X 115MM DOUBLE	79	115	22	29	12	13.8	4	12	12
105AD		25MM X 123MM DOUBLE	89	123	25	33	14	16.3	5	14	14
106AD		29MM X 132MM DOUBLE	100	130	29	35	16	18.3	5	16	16
107AD		32MM X 147MM DOUBLE	111	147	32	39	18	20.8	6	18	18
108AD		40MM X 162MM DOUBLE	128	162	40	46	20	22.8	6	20	20
109AD		40MM X 173MM DOUBLE	128	173	40	46	2	24.8	6	22	22
110AD		50MM X 220MM DOUBLE	169	220	50	59	25	28.3	8	25	25
111AD		58MM X 245MM DOUBLE	188	245	58	66	30	33.3	8	30	35
111/1AD		63MM X 262MM DOUBLE	198	262	63	84	30	33.3	8	30	35
112AD		70MM X 256MM DOUBLE	218	256	70	78	35	38.3	10	30	35
113AD		80MM X 285MM DOUBLE	255	285	80	95	40	43.3	12	30	35
114AD		95MM X 365MM DOUBLE	310	365	95	120	50	53.8	14	30	35

PRECISION COUPLINGS WITH PLAIN PIN



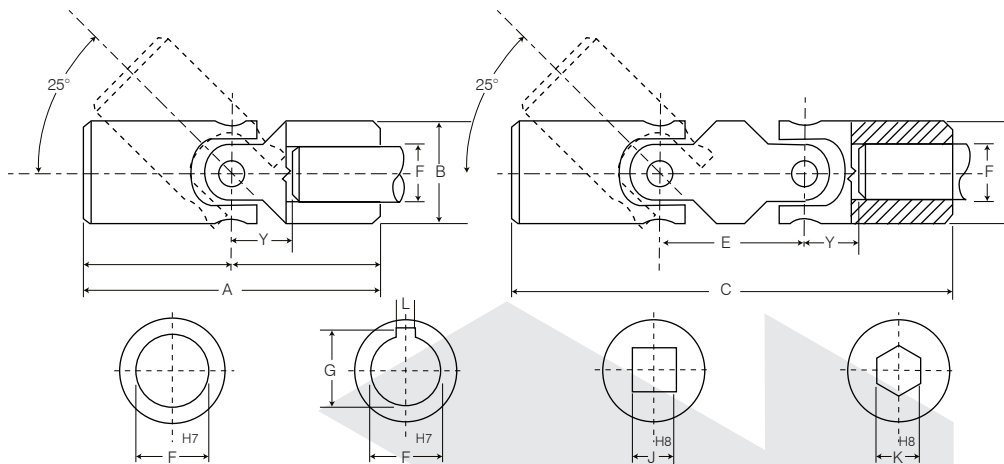
Y - JOINT CENTRE TO SHAFT END MIN. = B/2 + 2

PART NO	ITEM DESCRIPTION	DIMENSIONS/MAX. RECOMMENDED MACHINING							
		A Min.	A Std.	B Dia.	F Plain Bore	G Bore & Keyway	L Keyway	J Square Bore	K Hex Bore
100AL	10MM X 40MM SINGLE	40	40	10	5	-	-	-	-
101AL/50	13MM X 40MM SINGLE	40	50	13	6	-	-	-	-
102AL	16MM X 40MM SINGLE	40	40	16	8	9	2	8	-
105AL	29MM X 75MM SINGLE	56	74	29	14	16.3	5	14	14

PRECISION COUPLINGS WITH NEEDLE BEARINGS

PART NO	ITEM DESCRIPTION	DIMENSIONS/MAX. RECOMMENDED MACHINING							
		A Min.	A Std.	B Dia.	F Plain Bore	G Bore & Keyway	L Keyway	J Square Bore	K Hex Bore
102V	16MM X 56MM SINGLE	40	26	16	8	9	2	-	-
103V	20MM X 76MM SINGLE	48	76	20	10	11.4	3	10	10
105V	25MM X 90MM SINGLE	50	90	25	14	16.3	5	14	14
106V	32MM X 95MM SINGLE	65	95	32	16	18.3	5	16	16
107V	37MM X 108MM SINGLE	72	108	37	18	20.8	6	18	18
108V	40MM X 127MM SINGLE	82	127	40	20	22.8	6	20	20
109V	47MM X 127MM SINGLE	95	127	47	22	24.8	6	22	22
110V	50MM X 140MM SINGLE	108	140	50	25	28.3	8	25	25

PRECISION COUPLINGS WITH NEEDLE BEARINGS



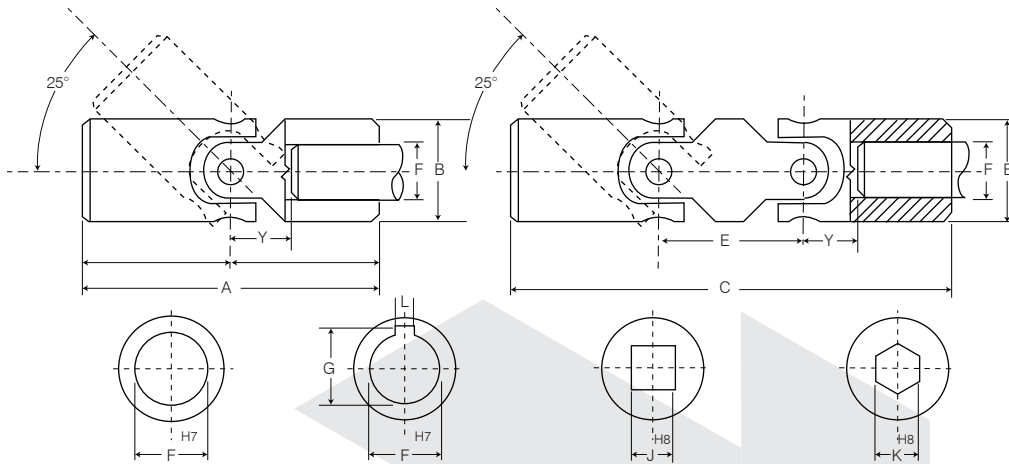
Y - JOINT CENTRE TO SHAFT END MIN. = B/2 + 2

PART NO	ITEM DESCRIPTION	DIMENSIONS/MAX. RECOMMENDED MACHINING								
		C Min.	C Std.	B Dia.	E Joint Centres	F Plain Bore	G Bore & Keyway	L Keyway	J Square Bore	K Hex Bore
102DV	16MM X 86MM DOUBLE		86	16		8	9	2	-	-
105DV	25MM X 123MM DOUBLE	80	123	25	33	14	16.3	5	14	14
106DV	32MM X 130MM DOUBLE	103	130	32	39	16	18.3	5	16	16
108DV	40MM X 162MM DOUBLE	130	162	40	48	20	22.8	6	20	20
110DV	50MM X 199MM DOUBLE	164	199	50	59	25	28.3	8	25	25

PRECISION COUPLINGS IN STAINLESS STEEL

PART NO	ITEM DESCRIPTION	DIMENSIONS/MAX. RECOMMENDED MACHINING								
		A Min.	A Std.	B Dia.	F Plain Bore	G Bore & Keyway	L Keyway	J Square Bore	K Hex Bore	
102SS	16MM X 58MM SINGLE	40	58	16	8	9	2	8	-	
103SS	22MM X 64MM SINGLE	45	64	22	10	11.4	3	10	10	
104SS	25MM X 86MM SINGLE	50	86	25	12	13.8	4	12	12	
105SS	29MM X 90MM SINGLE	56	90	29	14	16.3	5	14	14	
106SS	32MM X 95MM SINGLE	65	95	32	16	18.3	5	16	16	
108SS	40MM X 127MM SINGLE	82	127	40	20	22.8	6	20	20	
109SS	47MM X 127MM SINGLE	95	127	47	22	24.8	6	22	-	
110SS	50MM X 140MM SINGLE	108	140	50	25	28.3	8	25	25	

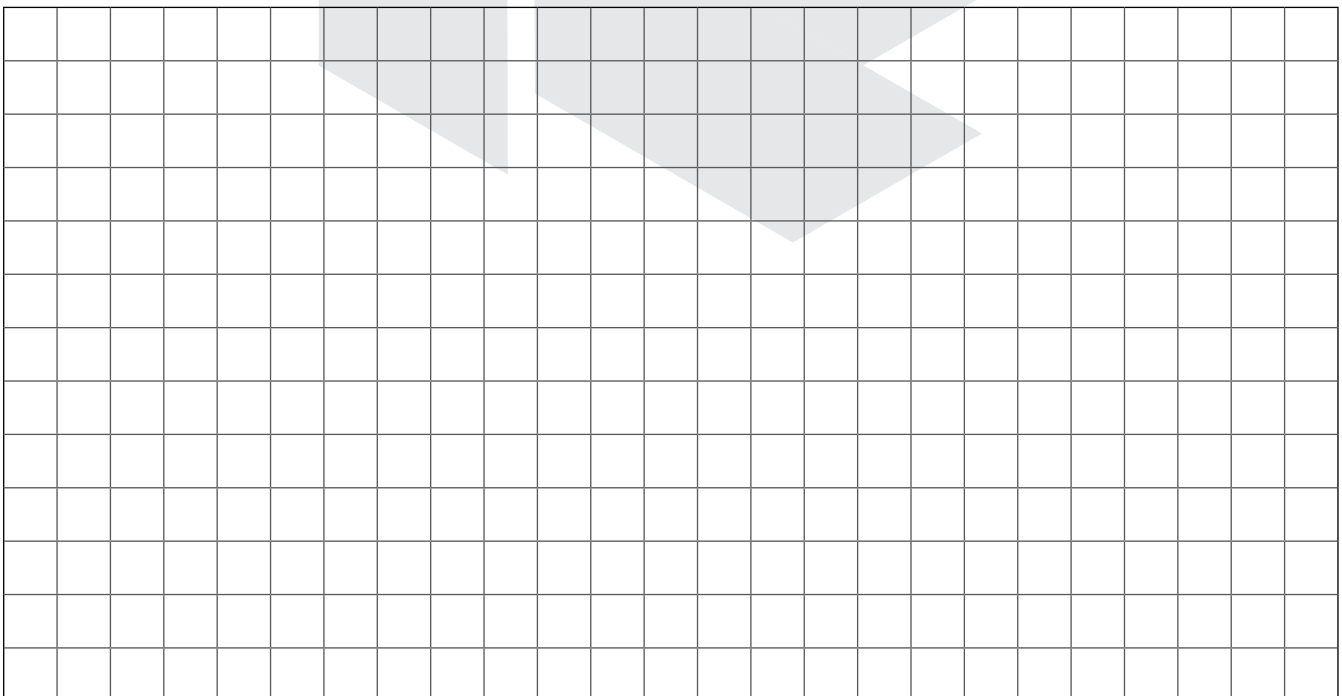
PRECISION COUPLINGS IN STAINLESS STEEL



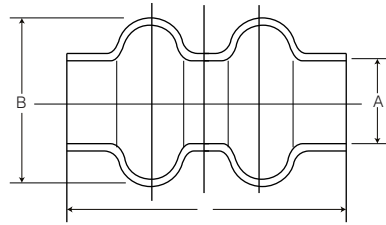
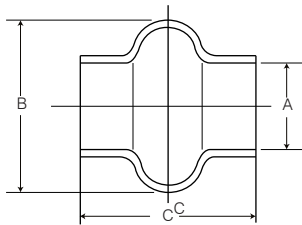
Y - JOINT CENTRE TO SHAFT END MIN. = B/2 + 2

PART NO	ITEM DESCRIPTION	DIMENSIONS/MAX. RECOMMENDED MACHINING								
		C Min.	C Std.	B Dia.	E Joint Centres	F Plain Bore	G Bore & Keyway	L Keyway	J Square Bore	K Hex Bore
104DSS	22MM X 115MM DOUBLE	79	115	22	29	12	13.8	4	12	12

NOTES & DRAWINGS

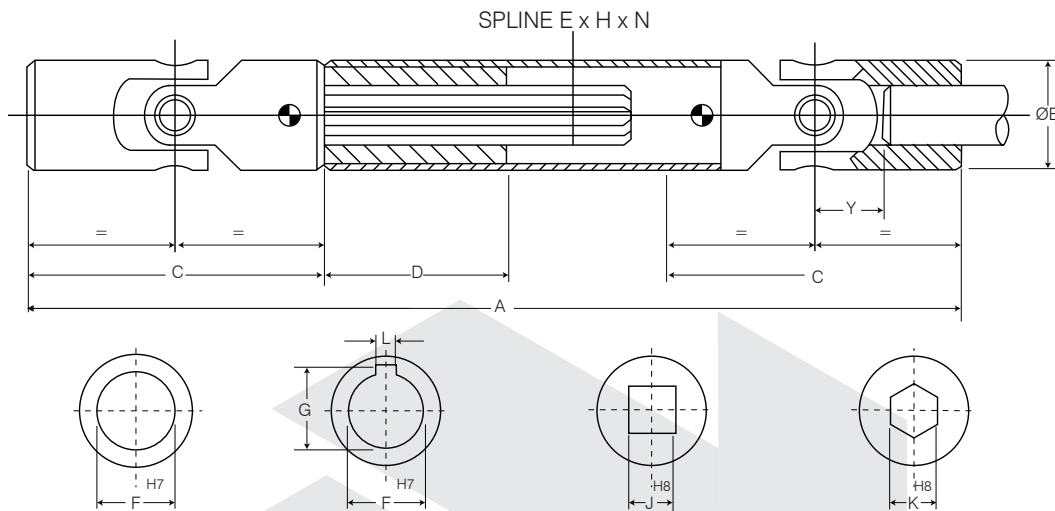


BOOTS TO SUIT PRECISION COUPLINGS



PART NO	ITEM DESCRIPTION	DIMENSIONS		
		A Dia.	B Dia.	C Length
SINGLE BOOTS				
102G/16	BOOT TO SUIT 16MM SINGLE	16	35	32
103G/22	BOOT TO SUIT 22MM SINGLE	18	39	47
104G/26	BOOT TO SUIT 25MM SINGLE	24.5	47	52
105G/29	BOOT TO SUIT 29MM SINGLE	27.5	51	58
106G/32	BOOT TO SUIT 32MM SINGLE	30.5	56	67
107G/37	BOOT TO SUIT 37MM SINGLE	35.5	66	74
108G/40	BOOT TO SUIT 40MM SINGLE	40	75	84
110G/50	BOOT TO SUIT 50MM SINGLE	50	93	110
111G/58	BOOT TO SUIT 58MM SINGLE	56	105	124
112G/70	BOOT TO SUIT 70MM SINGLE	70	130	137
113G/80	BOOT TO SUIT 80MM SINGLE	80	135	150
114G/95	BOOT TO SUIT 90MM SINGLE	90	160	285
DOUBLE BOOTS				
104GD/22	BOOT TO SUIT 20MM DOUBLE	20	45	65
105GD/26	BOOT TO SUIT 25MM DOUBLE	24	52	70
106GD/29	BOOT TO SUIT 29MM DOUBLE	28	56	80
107GD/32	BOOT TO SUIT 32MM DOUBLE	32	65	90
108GD/411	BOOT TO SUIT 40MM DOUBLE	40	72	138
110GD/50	BOOT TO SUIT 50MM DOUBLE	50	95	155

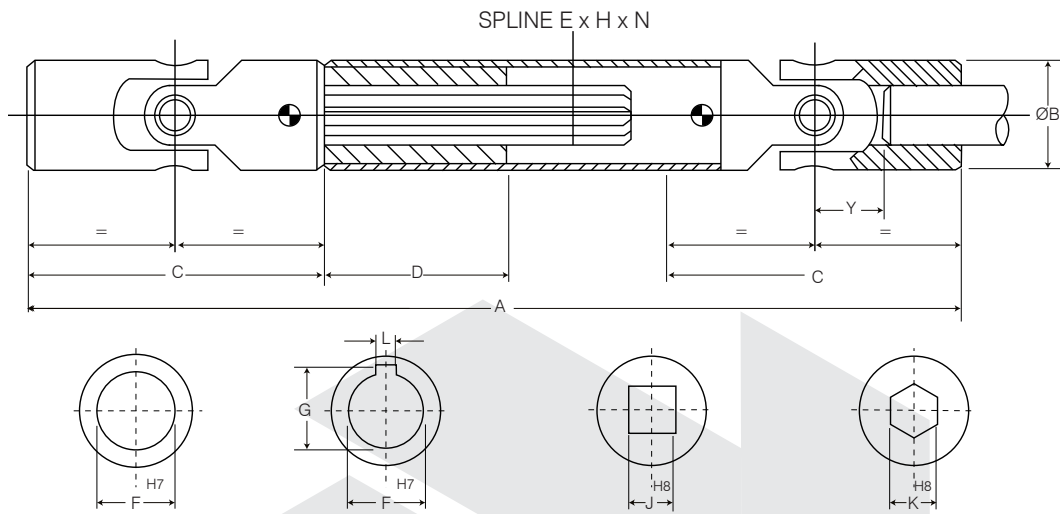
PRECISION SHAFTS WITH HARDENED BUSH JOINTS



Y - JOINT CENTRE TO SHAFT END MIN. = B/2 + 2

PART NO	ITEM DESCRIPTION	DIMENSIONS/MAX. RECOMMENDED MACHINING											
		A Min Length	B Joint Dia.	C Length Min.	C Length Std	D Sleeve Length	E Spline Dia.	N No. of Splines	F Plain Bore	G Bore & Keyway	L Key- way	J Square Bore	K Hex Bore
125A	132 X 22 SHAFT WITH BUSH JOINTS	132	22	45	76	40	14	6	10	11.4	3	10	10
126A	142 X 25 SHAFT WITH BUSH JOINTS	142	25	50	86	45	16	6	12	13.8	4	12	12
127A	162 X 29 SHAFT WITH BUSH JOINTS	162	29	56	90	45	16	6	14	16.3	5	14	14
128A	182 X 32 SHAFT WITH BUSH JOINTS	182	32	65	95	45	20	6	16	18.3	5	16	16
129A	197 X 37 SHAFT WITH BUSH JOINTS	197	37	72	108	45	20	6	18	20.3	6	17	18
130A	222 X 40 SHAFT WITH BUSH JOINTS	222	40	82	127	45	22	6	20	22.8	6	20	20
131A	252 X 47 SHAFT WITH BUSH JOINTS	252	47	95	127	48	25	6	22	24.8	6	22	22
132A	272 X 50 SHAFT WITH BUSH JOINTS	272	50	108	140	48	28	6	25	28.3	8	25	25
133A	322 X 58 SHAFT WITH BUSH JOINTS	322	58	122	166	50	32	6	30	33.3	8	30	35
133/1A	352 X 63 SHAFT WITH BUSH JOINTS	352	63	140	178	50	38	8	30	33.3	8	30	35
134A	352 X 70 SHAFT WITH BUSH JOINTS	352	70	140	178	50	38	8	35	38.3	10	36	35
135A	392 X 80 SHAFT WITH BUSH JOINTS	392	80	160	210	75	48	8	40	43.3	12	40	35
136A	452 X 95 SHAFT WITH BUSH JOINTS	452	95	190	254	75	48	8	50	53.8	14	50	35

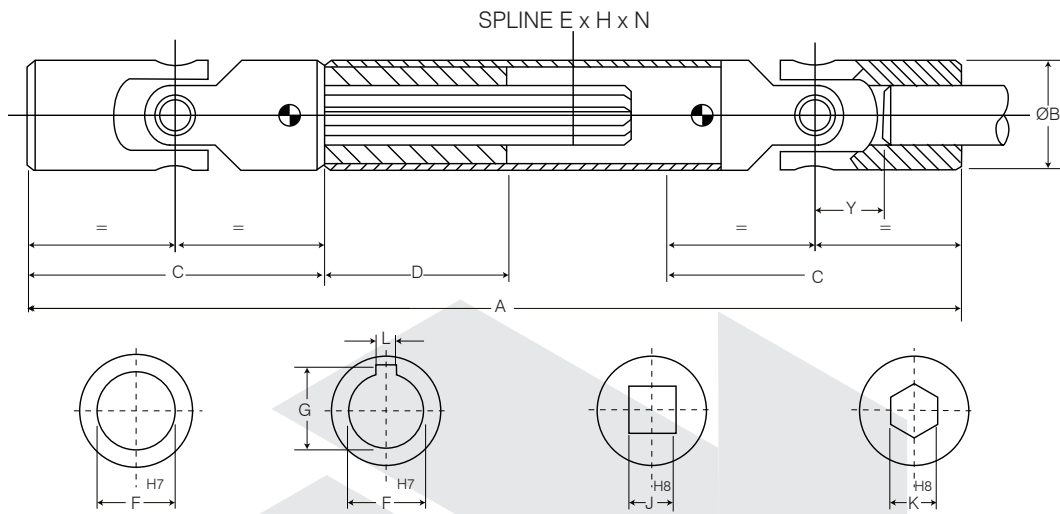
PRECISION SHAFTS WITH PLAIN PIN JOINTS



Y - JOINT CENTRE TO SHAFT END MIN. = B/2 + 2

PART NO	ITEM DESCRIPTION	DIMENSIONS/MAX. RECOMMENDED MACHINING											
		A Min Length	B Joint Dia.	C Length Min.	C Length Std	D Sleeve Length	E Spline Dia.	N No. of Splines	F Plain Bore	G Bore & Keyway	L Key- way	J Square Bore	K Hex Bore
125AL	132 X 20 SHAFT WITH PLAIN PIN JOINTS	132	20	45	62	40	14	6	10	11.4	3	10	10
126AL	142 X 25 SHAFT WITH PLAIN PIN JOINTS	142	25	50	74	45	16	6	12	13.8	4	12	12
127AL	162 X 29 SHAFT WITH PLAIN PIN JOINTS	162	29	56	74	45	16	6	14	16.3	5	14	14
128AL	182 X 32 SHAFT WITH PLAIN PIN JOINTS	182	32	65	86	45	20	6	16	18.3	5	16	16
129AL	197 X 37 SHAFT WITH PLAIN PIN JOINTS	197	37	72	108	45	20	6	18	20.3	6	17	18
130AL	222 X 40 SHAFT WITH PLAIN PIN JOINTS	222	40	82	127	45	22	6	20	22.8	6	20	20
131AL	252 X 47 SHAFT WITH PLAIN PIN JOINTS	252	47	95	127	48	25	6	22	24.8	6	22	22
132AL	272 X 50 SHAFT WITH PLAIN PIN JOINTS	272	50	108	132	48	28	6	25	28.3	8	25	25
133AL	322 X 58 SHAFT WITH PLAIN PIN JOINTS	322	58	122	166	50	32	6	30	33.3	8	30	30

PRECISION SHAFTS WITH NEEDLE BEARING JOINTS

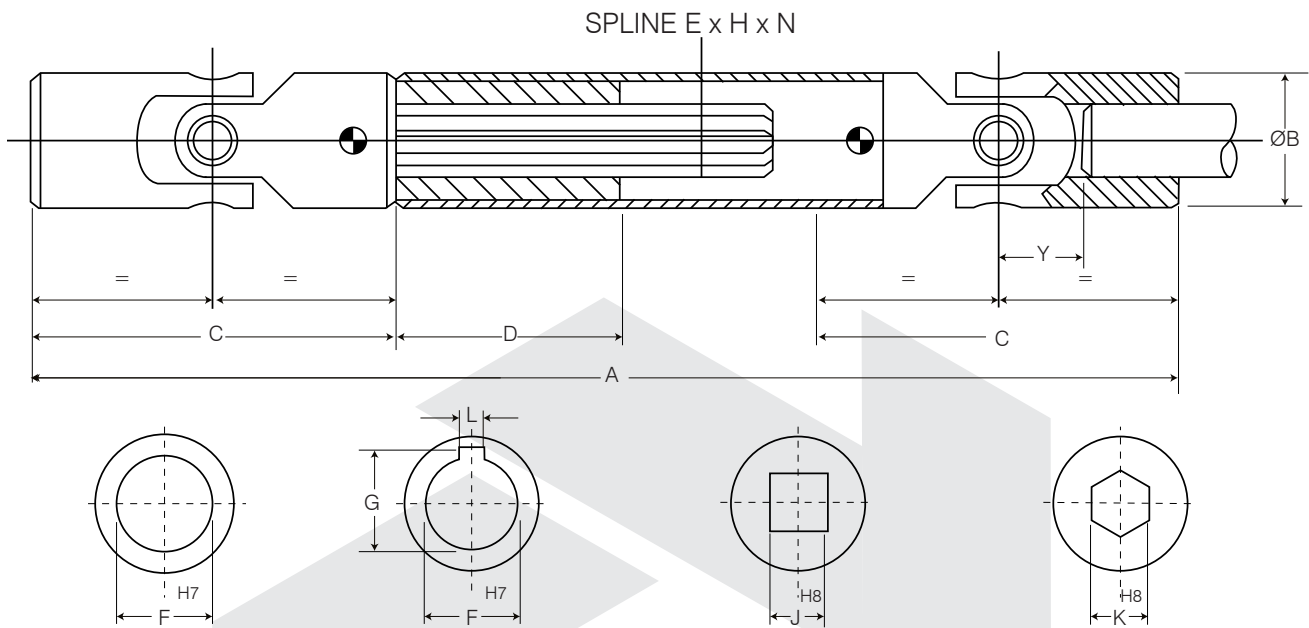


Y - JOINT CENTRE TO SHAFT END MIN. = B/2 + 2

PART NO	ITEM DESCRIPTION	DIMENSIONS/MAX. RECOMMENDED MACHINING											
		A Min Length	B Joint Dia.	C Length Min.	C Length Std	D Sleeve Length	E Spline Dia.	N No. of Splines	F Plain Bore	G Bore & Keyway	L Key- way	J Square Bore	K Hex Bore
125V *	132 X 20 SHAFT WITH NEEDLE BRG JOINTS	132	20	48	76	40	14	6	10	11.4	3	10	10
127V *	142 X 25 SHAFT WITH NEEDLE BRG JOINTS	142	25	50	90	45	16	6	14	16.3	5	14	14
128V *	182 X 32 SHAFT WITH NEEDLE BRG JOINTS	182	32	65	95	45	20	6	16	18.3	5	16	16
129V	197 X 37 SHAFT WITH NEEDLE BRG JOINTS	197	37	72	108	45	20	6	18	20.8	6	17	18
130V *	222 X 40 SHAFT WITH NEEDLE BRG JOINTS	222	40	82	127	45	22	6	20	22.8	6	20	20
131V	252 X 47 SHAFT WITH NEEDLE BRG JOINTS	252	47	95	127	48	25	6	22	24.8	6	22	22
132V *	272 X 50 SHAFT WITH NEEDLE BRG JOINTS	272	50	108	140	48	28	6	25	28.3	8	25	25
133V *	322 X 63 SHAFT WITH NEEDLE BRG JOINTS	322	63	122	166	50	38	8	30	33.3	8	30	30
134V *	352 X 70 SHAFT WITH NEEDLE BRG JOINTS	352	70	140	178	50	38	8	35	38.3	10	30	35
135V *	392 X 80 SHAFT WITH NEEDLE BRG JOINTS	392	80	160	210	75	48	8	40	43.3	12	30	35
136V	452 X 95 SHAFT WITH NEEDLE BRG JOINTS	452	95	190	254	75	48	8	50	53.8	14	30	35

* THESE PARTS ALSO AVAILABLE IN HEAVY DUTY (HD) VERSION

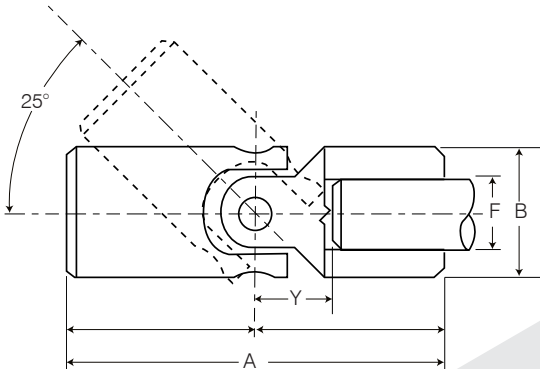
PRECISION SHAFTS IN STAINLESS STEEL



Y - JOINT CENTRE TO SHAFT END MIN. = B/2 + 2

PART NO	ITEM DESCRIPTION	DIMENSIONS/MAX. RECOMMENDED MACHINING											
		A Min Length	B Joint Dia.	C Length Min.	C Length Std	D Sleeve Length	E Splined Dia.	N No. of Splines	F Plain Bore	G Bore & Keyway	L Key- way	J Square Bore	K Hex Bore
125SS	132 X 22 SHAFT IN STAINLESS STEEL	132	22	45	76	40	14	6	10	11.4	3	10	10
126SS	142 X 25 SHAFT IN STAINLESS STEEL	142	25	50	86	45	16	6	12	13.8	4	12	12
127SS	162 X 29 SHAFT IN STAINLESS STEEL	162	29	56	90	45	16	6	14	16.3	5	14	14
128SS	182 X 32 SHAFT IN STAINLESS STEEL	182	32	65	95	45	20	6	16	18.3	5	16	16
129SS	197 X 37 SHAFT IN STAINLESS STEEL	197	37	72	108	45	20	6	18	20.3	6	17	18
130SS	222 X 40 SHAFT IN STAINLESS STEEL	222	40	82	127	45	20	6	20	22.8	6	20	20
131SS	252 X 47 SHAFT IN STAINLESS STEEL	252	47	95	127	48	28	6	22	24.8	6	22	22
132SS	272 X 50 SHAFT IN STAINLESS STEEL	272	50	108	140	48	28	6	25	28.3	8	25	25
133SS	322 X 58 SHAFT IN STAINLESS STEEL	322	58	122	166	50	30 A/F	HEX	30	33.3	8	30	35
133/1SS	352 X 63 SHAFT IN STAINLESS STEEL	352	63	140	178	50	41 A/F	HEX	30	33.3	8	30	35

PRECISION COUPLINGS WITH HARDENED BUSHES



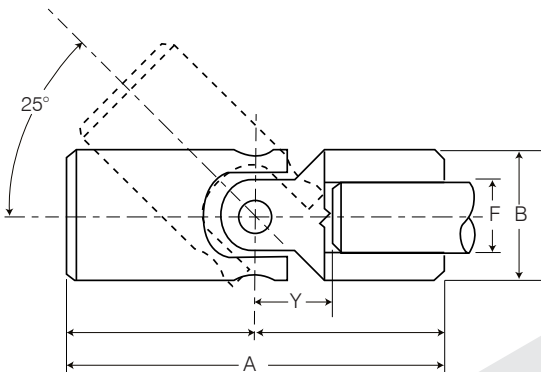
TORQUE RATINGS / SELECTION CHART

PART NO		REVS PER MINUTE						
SINGLE JOINTS	SLIP SHAFTS	100	200	300	400	500	700	800
		TORQUE Nm						
103A	125A	25.0	17.0	14.5	13.0	12.0	11.0	7.5
104A	126A	43.0	25.0	20.5	17.0	15.5	13.0	12.0
105A	127A	68.5	43.0	39.5	36.0	33.5	28.5	26.5
106A	128A	86.5	84.0	72.0	57.5	51.5	41.0	36.0
107A	129A	156.0	120.0	96.0	72.0	60.0	48.0	-
108A	130A	240.0	168.0	120.0	96.0	84.0	60.0	-
109A	131A	300.0	192.0	144.0	120.0	96.0	72.0	-
110A	132A	384.0	240.0	168.0	144.0	120.0	96.0	-
111A	133A	432.0	264.0	192.0	156.0	132.0	-	-
111/1A	133/1A	432.0	264.0	192.0	156.0	132.0	-	-
112A	134A	456.0	300.0	228.0	174.0	144.0	-	-
113A	135A	504.0	336.0	264.0	216.0	-	-	-
114A	136A	720.0	480.0	336.0	264.0	-	-	-

FOR DOUBLE JOINTS THE ABOVE TORQUE FIGURES NEED TO BE MULTIPLIED BY A FACTOR OF 0.9

Conversions: 1.0 Kgm = 9.8066 Nm, 1.0 Kgm = 7.23 Ft/lb, 1.0 Ft/lb = 1.356 Nm

PRECISION COUPLINGS WITH PLAIN PIN



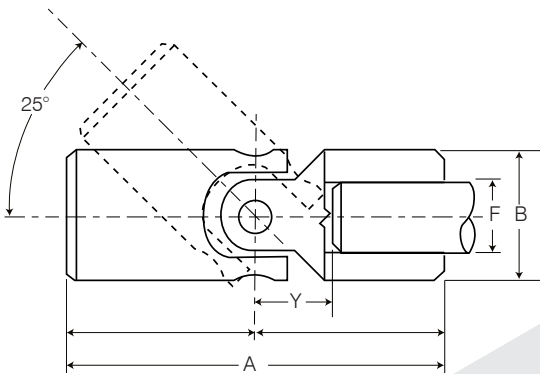
TORQUE RATINGS / SELECTION CHART

PART NO		REVS PER MINUTE						
SINGLE JOINTS	SLIP SHAFTS	100	200	300	400	500	700	800
		TORQUE Nm						
100AL	-	5.5	5.0	4.2	3.8	3.5	-	-
101AL/50	-	6.6	6.6	5.3	4.8	4.4	-	-
102AL	-	13.0	9.0	8.0	7.0	6.0	5.2	4.7
-	125AL	18.5	12.5	10.5	9.7	8.8	7.9	5.3
-	126AL	31.5	19.0	15.0	12.0	11.0	9.5	8.8
105AL	127AL	50.0	32.0	29.0	26.5	24.5	20.0	19.0
-	128AL	68.0	63.0	53.0	42.0	38.0	30.0	26.0
-	129AL	114.0	90.0	70.0	53.0	44.0	35.0	-
-	130AL	176.0	126.0	88.0	70.0	62.0	44.0	-
-	131AL	220.0	144.0	105.0	88.0	70.0	53.0	-
-	132AL	288.0	180.0	126.0	108.0	90.0	72.0	-
-	133AL	324.0	198.0	144.0	117.0	99.0	-	-

FOR DOUBLE JOINTS THE ABOVE TORQUE FIGURES NEED TO BE MULTIPLIED BY A FACTOR OF 0.9

Conversions: 1.0 Kgm = 9.8066 Nm, 1.0 Kgm = 7.23 Ft/lb, 1.0 Ft/lb = 1.356 Nm

PRECISION COUPLINGS WITH NEEDLE BEARINGS



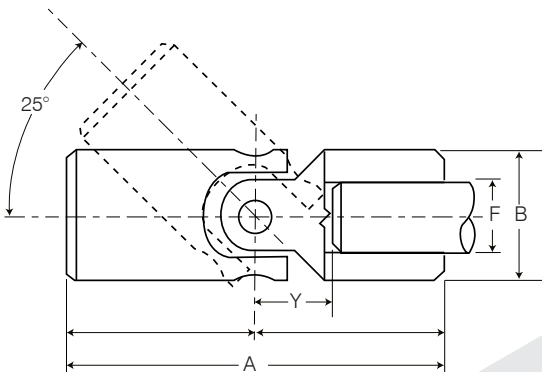
TORQUE RATINGS / SELECTION CHART

PART NO		REVS PER MINUTE					
SINGLE JOINTS	SLIP SHAFTS	250	500	1000	2000	3000	4000
		TORQUE Nm					
102V	-	10.4	8.0	6.6	5.8	4.7	4.2
103V	125V	22.0	17.0	14.0	11.0	10.0	9.0
105V	127V	34.0	29.0	24.0	22.0	20.0	18.0
106V	128V	65.0	55.0	45.0	40.0	37.0	32.0
107V	129V	75.0	61.0	50.0	45.0	40.0	36.0
108V	130V	140.0	120.0	100.0	80.0	70.0	65.0
109V	131V	162.0	132.0	108.0	88.0	77.0	71.0
110V	132V	200.0	170.0	130.0	110.0	90.0	85.0
111V	133V	300.0	270.0	230.0	190.0	160.0	140.0
112V	134V	326.0	277.0	237.0	198.0	168.0	-
113V	135V	365.0	303.0	255.0	205.0	186.0	-
114V	136V	402.0	335.0	275.0	225.0	198.0	-

FOR DOUBLE JOINTS THE ABOVE TORQUE FIGURES NEED TO BE MULTIPLIED BY A FACTOR OF 0.9

Conversions: 1.0 Kgm = 9.8066 Nm, 1.0 Kgm = 7.23 Ft/lb, 1.0 Ft/lb = 1.356 Nm

PRECISION COUPLINGS IN STAINLESS STEEL



TORQUE RATINGS / SELECTION CHART

PART NO		REVS PER MINUTE						
SINGLE JOINTS	SLIP SHAFTS	100	200	300	400	500	700	800
		TORQUE Nm						
102SS	-	8.6	6.0	5.3	4.6	4.0	3.4	3.1
103SS	125SS	12.3	8.3	7.0	6.4	5.8	5.2	3.5
104SS	126SS	21.0	12.6	10.0	8.0	7.3	6.3	5.8
105SS	127SS	33.0	21.3	19.3	17.6	16.3	13.3	12.6
106SS	128SS	45.0	42.0	35.3	28.0	25.3	20.0	17.3
-	129SS	76.0	60.0	46.6	35.3	29.3	23.3	-
108SS	130SS	117.0	84.0	58.6	46.6	41.3	29.3	-
109SS	131SS	146.0	96.0	70.0	58.6	46.6	35.3	-
110SS	132SS	192.0	120.0	84.0	72.0	60.0	48.0	-
-	133SS	216.0	132.0	96.0	78.0	66.0	-	-
-	133/1SS	216.0	132.0	96.0	78.0	66.0	-	-

FOR DOUBLE JOINTS THE ABOVE TORQUE FIGURES NEED TO BE MULTIPLIED BY A FACTOR OF 0.9

Conversions: 1.0 Kgm = 9.8066 Nm, 1.0 Kgm = 7.23 Ft/lb, 1.0 Ft/lb = 1.356 Nm

We're here for the long haul.

The Beattys logo consists of the word "Beattys" in a white, sans-serif font. The letter "B" is stylized with a small orange square at its top-left corner. The logo is centered within a dark grey circular background.

Beattys

Beattys Group Ltd (New Zealand)

4 Harbour Ridge Drive, Wiri, Auckland 2104
PO Box 97410, Manukau City, Auckland 2241

Phone +64 9 263 7761

Fax +64 9 262 0970

sales@beattys.com